

39°37'30"

Latitude

80°27'30"

Longitude

.675  
.12w

Topo Location

7.5' Loc. \_\_\_\_\_ 15' Loc. \_\_\_\_\_  
\_\_\_\_\_ (calc.) \_\_\_\_\_

Company Equitable Gas Co

Farm Jehu James #1

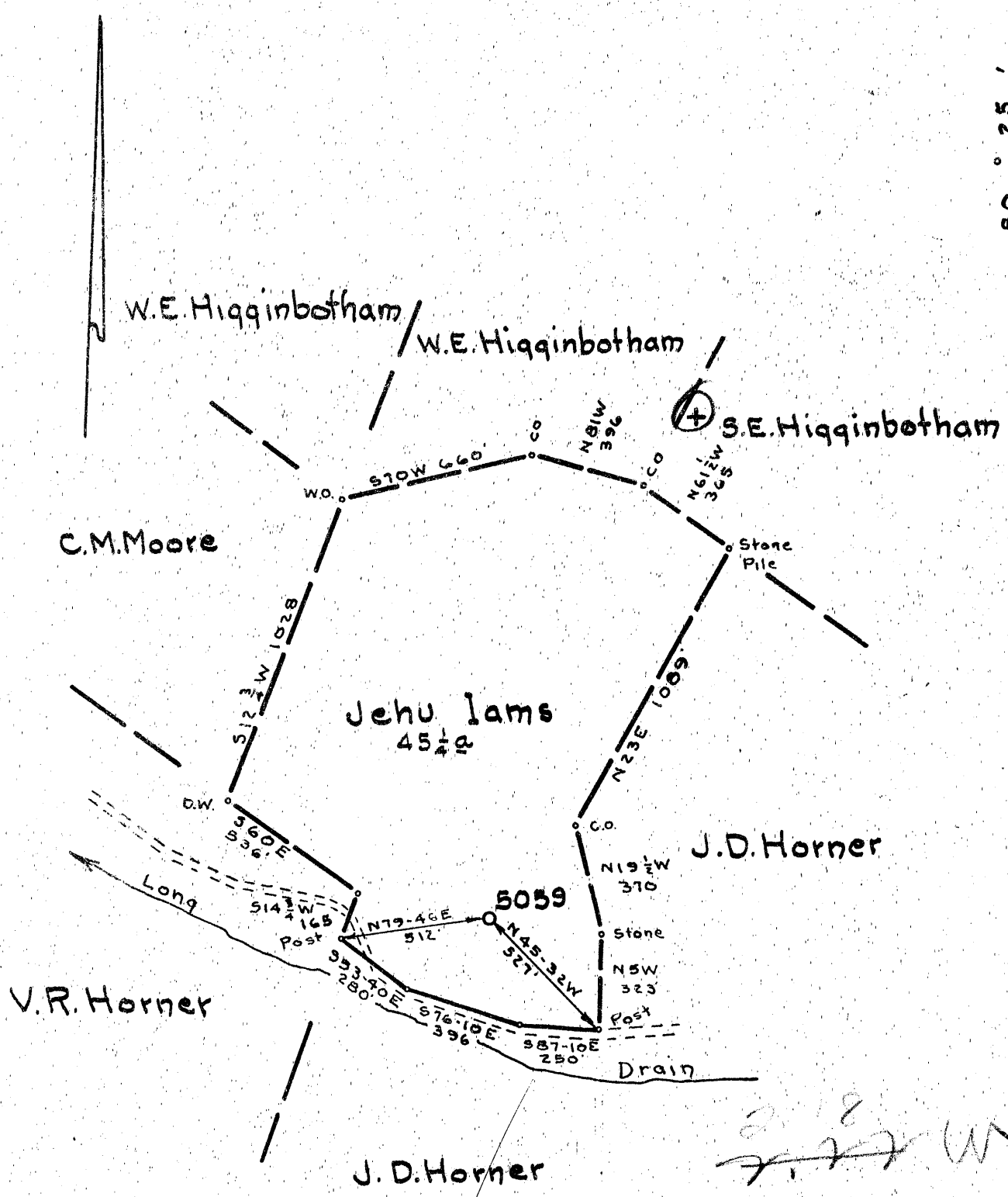
15' Quad \_\_\_\_\_  
(sec.)

7.5' Quad Glover Gap

District Church

WELL LOCATION PLAT

County 103 Permit 30999



New Location...   
 Drill Deeper.....   
 Abandonment.....

MAR - 8 1954

*Handwritten notes:*  
 2.8  
 2.77 W  
 2.63  
 3.57

Company Equitable Gas Co., W.Va. Div.  
 Address Clarksburg W.Va.  
 Farm Jehu Iams  
 Tract \_\_\_\_\_ Acres 45 1/2 Lease No. 3870  
 Well (Farm) No. 1 Serial No. 5059  
 Elevation (Spirit Level) 1255.5 VA.  
 Quadrangle Mannington SW 12  
 County Wetzel District Church  
 Engineer James J. Jeffers  
 Engineer's Registration No. 1084  
 File No. 1767127 Drawing No. \_\_\_\_\_  
 Date 2-11-54 Scale 1" = 500'

STATE OF WEST VIRGINIA  
 DEPARTMENT OF MINES  
 OIL AND GAS DIVISION  
 CHARLESTON

**WELL LOCATION MAP**  
 FILE NO. Wet-999-A

+ Denotes location of well on United States Topographic Maps, scale 1 to 62,500, latitude and longitude lines being represented by border lines as shown.

- Denotes one inch spaces on border line of original tracing.

*Hooper*



STATE OF WEST VIRGINIA  
DEPARTMENT OF MINES  
OIL AND GAS DIVISION

*1424*

Quadrangle Mon. S/W. 1-2

WELL RECORD

Permit No. 994A

Oil or Gas Well **"GAS"**  
(KIND)

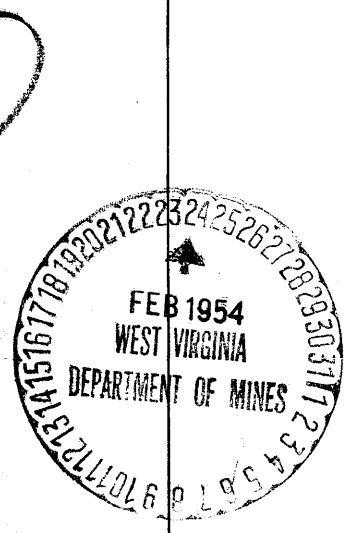
Company Equitable Gas Company-West Va Div,  
Clarksburg, West Va.  
 Address J. Lane Acres 45-1/2  
 Farm Mon. S/W. 1-2  
 Location (waters) Mon. S/W. 1-2  
 Well No. 5059 Elev. 1255.5 VA  
 District Church County Wetzel  
 The surface of tract is owned in fee by Alba Jones  
E.D.A. Address Glover Gap, W.Va.  
 Mineral rights are owned by Wm. S. Purtee  
 Address Glover Gap, W.Va.  
 Drilling commenced June 19th, 1913  
 Drilling completed August 19th, 1913  
 Date Shot \_\_\_\_\_ From \_\_\_\_\_ To \_\_\_\_\_  
 With \_\_\_\_\_

Casing and Tubing	Used in Drilling	Left in Well	Packers
Size			
16			Kind of Packer
13			
10	<b>289'</b>	<b>289'</b>	Size of
8 1/4	<b>1478'</b>	<b>1478'</b>	
6 3/4	<b>2215'</b>	<b>2215'</b>	Depth set
5 3/16			
3			Perf. top
2			Perf. bottom
Liners Used			Perf. top
			Perf. bottom

Open Flow \_\_\_\_\_ /10ths Water in \_\_\_\_\_ Inch  
 \_\_\_\_\_ /10ths Merc. in \_\_\_\_\_ Inch  
 Volume \_\_\_\_\_ Cu. Ft.  
 Rock Pressure \_\_\_\_\_ lbs. \_\_\_\_\_ hrs.  
 Oil \_\_\_\_\_ bbls., 1st 24 hrs.  
 Fresh water \_\_\_\_\_ feet \_\_\_\_\_ feet  
 Salt water \_\_\_\_\_ feet \_\_\_\_\_ feet

CASING CEMENTED \_\_\_\_\_ SIZE \_\_\_\_\_ No. Ft. \_\_\_\_\_ Date \_\_\_\_\_  
 COAL WAS ENCOUNTERED AT 903 FEET 72 INCHES  
995 FEET 14 INCHES FEET INCHES  
 FEET INCHES FEET INCHES

Formation	Color	Hard or Soft	Top	Bottom	Oil, Gas or Water	Depth Found	Remarks
Clay	Yellow	Soft	0	3			
Slate	Light	"	3	45			
Lim	Dark	Hard	45	75			
Slate	Light	Soft	75	135			
Lim	"	Hard	135	140			
Slate	Dark	Soft	140	205			
Lim	"	Hard	205	265			
Slate	Light	Soft	265	285			
Lim	"	Hard	285	315			
Slat.	"	Soft	315	345			
Lim	"	Hard	345	370			
Slate	"	Soft	370	410			
Lim	Dark	Hard	410	435			
Slate	"	Soft	435	465			
Lim	"	Hard	465	515			
Slate	"	Soft	515	540			
Lim	"	Hard	540	570			
Slate	Light	Soft	570	630			
Lim	Dark	Hard	630	730			
Slate	"	Soft	730	775			
Lim	"	Hard	775	825			
Slate	"	Soft	825	845			
Lim	"	Hard	845	905			
M.T. Coal	"	Soft	905	909			
Slate	Light	Soft	909	919			
Lim	"	Hard	919	929			
Slate	Dark	Soft	929	949			
Lim	"	Hard	949	995			
Coal <i>dfh</i>	"	Soft	995	1002			
Slate	"	"	1002	1022			
Lim	Light	Hard	1022	1092			
Slate	Dark	Soft	1092	1110			
Sand	"	Hard	1110	1145			
Slate	"	Soft	1145	1195			
Lim	"	Hard	1195	1175			
Slate	Red	Soft	1175	1205			
Lim	Dark	Hard	1205	1225			
Slate	"	Soft	1225	1230			
Slate	Pink	"	1230	1242			



Formation	Color	Hard or Soft	Top	Bottom	Oil, Gas or Water	Depth Found	Remarks
Lime	Dark	Hard	1242	1265			
Slate	"	Soft	1265	1285			
Lime	"	Hard	1285	1295			
Slate	Red	Soft	1295	1320			
Lime	Dark	Hard	1320	1375			
Slate	"	Soft	1375	1390			
Lime	"	Hard	1390	1408			
Slate	Pink	Soft	1408	1420			
Little Dunderd	White	Hard	1420	1442			
Slate	Dark	Soft	1442	1454			
Slate	Pink	Soft	1454	1462			
Slate	Dark	Soft	1462	1471			
Big Dunderd	White	Soft	1471	1545			
Slate	"	Soft	1545	1610			
Gas Sand	"	Hard	1610	1623			
Slate	Dark	Soft	1623	1727			
1st. Salt Sand	White	Hard	1727	1823			
Slate/Lime	Dark	Hard/Soft	1823	1855	Water	1782'	
2nd. Salt Sand	White	Hard	1855	2023			
Lime	Dark	Hard	2023	2068			
Slate <i>satt</i>	Dark	Soft	2068	2133	Gas	2147-2165'	
Lower Sand	White	Hard	2133	2200			
Pencil Cove	Dark	Soft	2200	2203			
Big Lime	White	Hard	2203	2253			
Big Injun	"	Hard	2253	2442			
Slate/shells	"	Hard/Soft	2442	2723			
Lower Grit	Light	Hard	2723	2825			
Slate	Dark	Soft	2825	2913			
30 Ft. Sand	White	Hard	2913	2978			
Slate	Dark	Soft	2978	3003			
30 Ft. Sand	Light	Hard	3003	3027			
Red Rock	Red	Soft	3027	3029			
Garden Stray	Light	Hard	3029	3043			
Slate	Black	Soft	3043	3046			
Garden Sand	White	Hard	3046	3146	Gas	3123'	
Slate	Black	Soft	3146	3168			
4th Sand	White	Hard	3168	3223			
Slate/shells	Dark	Hard/Soft	3223	3276			
5th Sand	Light	Hard	3276	3284			
Slate/shells	Dark	Soft/Hard	3284	3296			
Total Depth.				3296			

February 8, 1954

Date \_\_\_\_\_, 19\_\_\_\_

Equitable Gas Company - West Va Div.

APPROVED \_\_\_\_\_

Owner

By W. E. McMaster  
(Title)