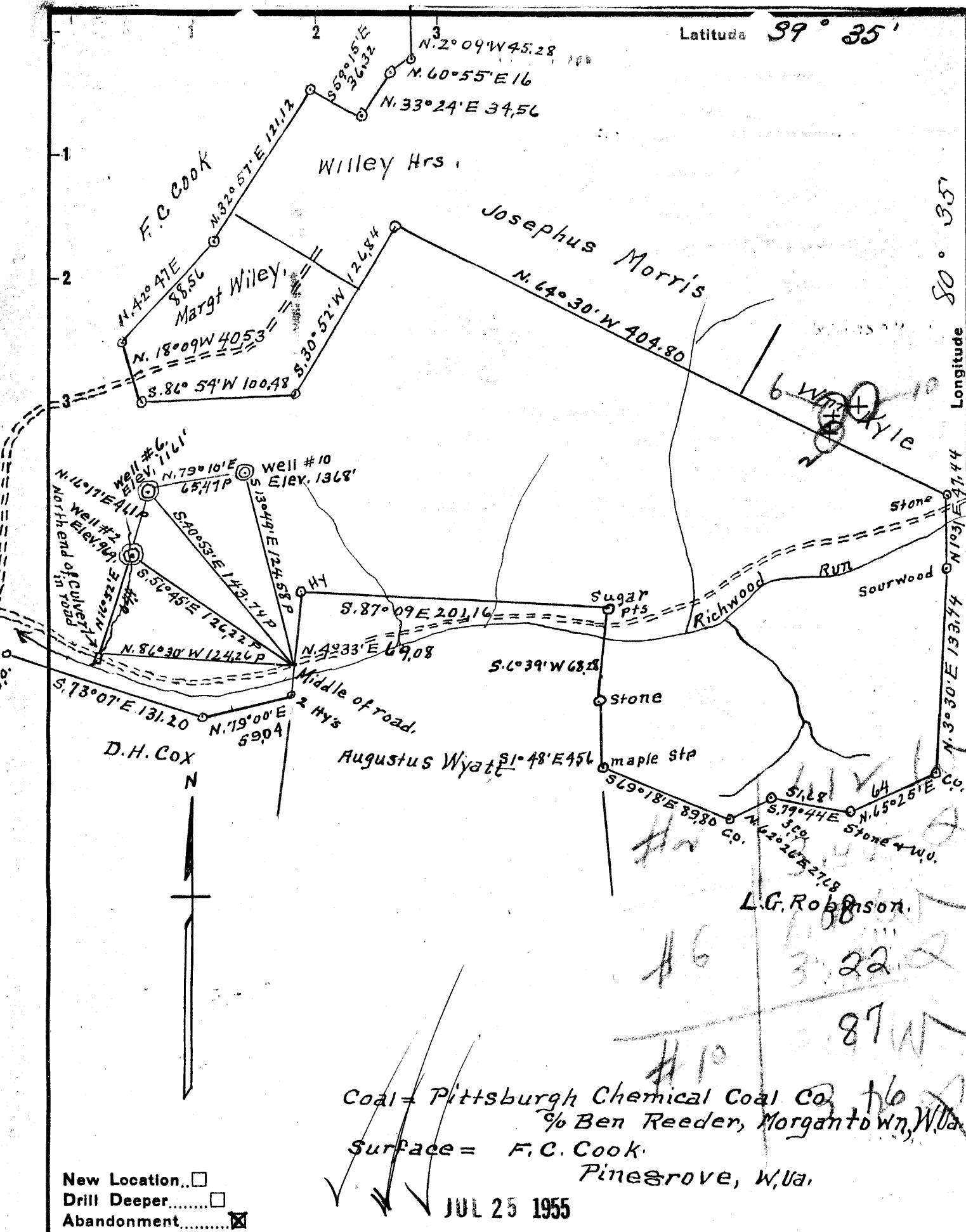


Latitude 39° 35'

Longitude 80° 35'



New Location..   
 Drill Deeper.....   
 Abandonment.....

Coal = Pittsburgh Chemical Coal Co. % Ben Reeder, Morgantown, W.Va.  
 Surface = F.C. Cook.  
 Pinegrove, W.Va.

JUL 25 1955

Company Truman Smith  
 Address Hundred W Va  
 Farm John Mills  
 Tract 1 Acres 712 Lease No. \_\_\_\_\_  
 Well (Farm) No's. 2-6-8-10 Serial No. \_\_\_\_\_  
 Elevation (Spirit Level) # 2=969'-No. 6=1161'  
 Quadrangle Littleton  
 County Wetzel District Grant  
 Engineer A.L. Headley  
 Engineer's Registration No. 2021  
 File No. \_\_\_\_\_ Drawing No. \_\_\_\_\_  
 Date 4-23-55 Scale 1" = 1320'

STATE OF WEST VIRGINIA  
 DEPARTMENT OF MINES  
 OIL AND GAS DIVISION  
 CHARLESTON

**WELL LOCATION MAP**  
 FILE NO. Wet-1011-A #6  
Wet-1012-A #10

+ Denotes location of well on United States Topographic Maps, scale 1 to 62,500, latitude and longitude lines being represented by border lines as shown.

- Denotes one inch spaces on border line of original tracing.

John Mills Nos. 6 & 10 - Truman Smith - Wet-1011-1012-A



STATE OF WEST VIRGINIA  
DEPARTMENT OF MINES  
OIL AND GAS DIVISION

WELL RECORD

Oil or Gas Well \_\_\_\_\_ (KIND)

Permit No. \_\_\_\_\_

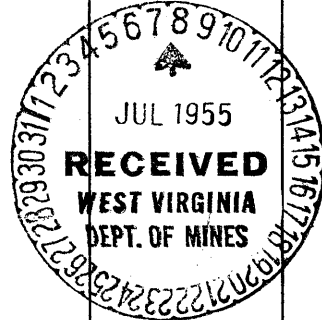
Company A. M. Sutter  
Address Martinsburg, W. Va.  
Farm John Mills Acres 7.25  
Location (waters) Blaine Run  
Well No. 20 700 Elev. 1200  
District Grant County Putnam  
The surface of tract is owned in fee by F. V. Cook  
Address Putnam, W. Va.  
Mineral rights are owned by \_\_\_\_\_  
Address \_\_\_\_\_  
Drilling commenced March 1955  
Drilling completed July 1955  
Date Shot \_\_\_\_\_ From \_\_\_\_\_ To \_\_\_\_\_  
With \_\_\_\_\_

Casing and Tubing	Used in Drilling	Left in Well	Packers
Size			Kind of Packer
16			
13			
10	<u>200</u>	<u>200</u>	Size of
8 1/4	<u>1000</u>	<u>1000</u>	Depth set
6 5/8	<u>1000</u>	<u>1000</u>	Perf. top
3			Perf. bottom
2			Perf. top
Liners Used			Perf. bottom

Open Flow \_\_\_\_\_ /10ths Water in \_\_\_\_\_ Inch  
\_\_\_\_\_ /10ths Merc. in \_\_\_\_\_ Inch  
Volume \_\_\_\_\_ Cu. Ft.  
Rock Pressure \_\_\_\_\_ lbs. \_\_\_\_\_ hrs.  
Oil \_\_\_\_\_ bbls., 1st 24 hrs.  
Fresh water \_\_\_\_\_ feet \_\_\_\_\_ feet  
Salt water \_\_\_\_\_ feet \_\_\_\_\_ feet

CASING CEMENTED	SIZE	No. Ft.	Date
COAL WAS ENCOUNTERED AT		FEET	INCHES
	FEET	INCHES	FEET
	FEET	INCHES	FEET

Formation	Color	Hard or Soft	Top	Bottom	Oil, Gas or Water	Depth Found	Remarks
Pittsburgh Coal			1120	1120			
1st Salt Sand			1200				
2nd Salt Sand			1250				
3rd Salt Sand			1270				
4th Salt Sand			1287				
Blank				1290	Flow of Oil		
Mg Lm			1300	1300	2217 to 2220		
Mg Lm			1300	1300	2220 to 2225		
Flinty Sand			1300		2225 to 2230		
Shaly Sand			1300				
Green Sand			1300	1300	Oil		
					2230 to 2237		
			<b>Total Depth 1300</b>				



OCT 6 1955

By

APPROVED

Own

Date

19

Formation	Color	Hard or Soft	Top	Bottom	Oil Gas or Water	Depth Found	Remarks

72.50 - 50.6  
 24.5 53.6  
 15.5 - 5.8  
 24.5 53.6