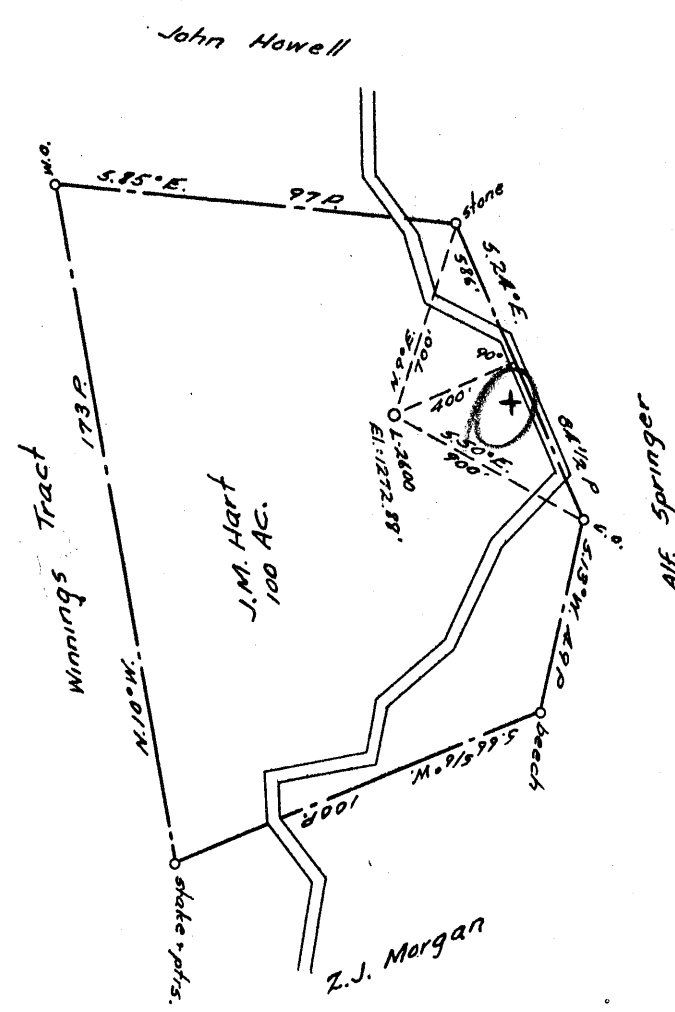


0 1 2 3 LATITUDE 9 0 40 1
 -1
 -2
 -3 LONGITUDE 80 0 40



COAL OWNED BY _____
 NEW LOCATION
 DRILL DEEPER
 ABANDONMENT
 NOV 7 1955

3.04
 3.1 W
 4.76 ~~4.85~~

COMPANY The Manufacturers Light & Heat Co.
 ADDRESS 800 Union Trust Bldg. Pgh. Pa.
 FARM J.M. Hart
 TRACT _____ ACRES 100 LEASE No. 7722
 WELL (FARM) No. 1 SERIAL No. 2600
 ELEVATION (SPIRIT LEVEL) 1272.88'
 QUADRANGLE Littleton
 COUNTY Wetzel DISTRICT Green
 ENGINEER Robert H. Neill
 ENGINEER'S REGISTRATION No. 361 E
 FILE No. _____ DRAWING No. Y-15-29A
 DATE 11 July 1955 SCALE 1" = 800'

STATE OF WEST VIRGINIA
 DEPARTMENT OF MINES
 OIL AND GAS DIVISION
 CHARLESTON

WELL LOCATION MAP

File No. Wet-1019-A

+ DENOTES LOCATION OF WELL ON UNITED STATES TOPOGRAPHIC MAPS, SCALE 1 TO 62,500. LATITUDE AND LONGITUDE LINES BEING REPRESENTED BY BORDER LINES AS SHOWN.
 - DENOTES ONE INCH SPACES ON BORDER LINE OF ORIGINAL TRACING.

J.M. HART No. 1 (2600) - M.L. & H. Co. - WET-1019-A



STATE OF WEST VIRGINIA
DEPARTMENT OF MINES
OIL AND GAS DIVISION

1444

Quadrangle _____

Permit No. 117A

WELL RECORD

Oil or Gas Well Gas
(KIND)

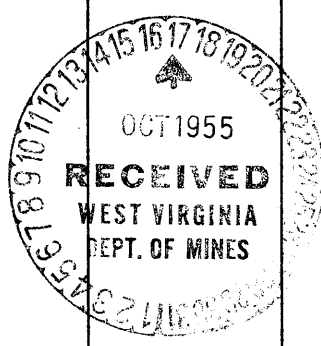
Company THE MANUFACTURERS LIGHT AND HEAT COMPANY
Address 800 UNION TRUST BLDG., PGH., PENNA.
Farm John Hart Acres 100
Location (waters) _____
Well No. 2600 Elev. 1272.88'
District Green County Wetzel
The surface of tract is owned in fee by _____
Address _____
Mineral rights are owned by _____
Address _____
Drilling commenced September 22, 1920
Drilling completed December 10, 1920
Date Shot _____ From _____ To _____
With _____
Open Flow 10/10ths Water in 2 Inch
/10ths Merc. in _____ Inch
Volume _____ Cu. Ft.
Rock Pressure 240 lbs. 2 hrs.
Oil _____ bbls., 1st 24 hrs.
Fresh water _____ feet
Salt water _____ feet

Casing and Tubing	Used in Drilling	Left in Well	Packers
Size			
16			Kind of Packer _____
13			
10	<u>435</u>		Size of _____
8 1/4	<u>1550</u>	<u>1550</u>	
6 5/8	<u>2256</u>	<u>2256</u>	Depth set _____
5 3/16			
3			Perf. top _____
2			Perf. bottom _____
Liners Used			Perf. top _____
			Perf. bottom _____

CASING CEMENTED _____ SIZE _____ No. Ft. _____ Date _____

COAL WAS ENCOUNTERED AT 48 FEET _____ INCHES
594 FEET 140 INCHES 1028 FEET _____ INCHES
960 FEET _____ INCHES 640 FEET _____ INCHES

Formation	Color	Hard or Soft	Top	Bottom	Oil, Gas or Water	Depth Found	Remarks
Red mud			0	20			
Rock			20	40			
Slate			40	48			
Native Coal			48	52			
Lime			52	70			
Slate			70	92			
Shells			92	120			
Slate			120	140			
Lime			140	158			
Slate			148	175			
Sand			175	210			
Red rock			210	235			
Lime			235	270			
Slate			270	340			
Sand			340	365			
Red rock			365	430			
Slate			430	465			
Sand			465	520			
Shells			520	550			
Lime			550	580			
Slate			580	594			
Coal			594	600			
Shells			600	610			
Slate			610	640			
Coal			640	645			
Slate			645	760			
Lime			760	830			
Lime			830	856			
Red mck			856	870			
Lime			870	922			
Slate			922	960			
Mapletown Coal			960	963			
Slate			963	1010			
Lime			1010	1028			
Pgh. Coal			1028	1030			
Slate			1030	1110			
Red rock			1110	1170			
Sand			1170	1190			
Slate			1190	1220			



JUNE 21 1956

Formation	Color	Hard or Soft	Top	Bottom	Oil, Gas or Water	Depth Found	Remarks
Red rock			1220	1270			
Lime			1270	1280			
Slate			1280	1356			
Lime			1356	1380			
Slate			1380	1420			
Sand			1420	1480			
Slate			1480	1545			
Sand			1545	1590			
Sand			1590	1640			
Slate			1640	1700			
Sand			1700	1730			
Slate			1730	1740			
Lime			1740	1825			
Slate			1825	2060			
2nd Salt Sand			2060	2080			
Slate			2080	2140			
Mason Sand	<i>Salt</i>		2180	2185			
Big Lime			2185	2259	Gas at 2178 to 2183		
Big Injun Sand			2259	2500	3/10" water in 3" opening		
Slate			2500	2540			
Sand			2540	2610			
Shells			2610	2690			
Slate			2690	2725			
Sand			2725	2735			
Slate			2735	2740			
Sand			2740	2745			
Slate			2745	2917			
Sand 50 ft.			2917	2925			
Pink Rock			2925	2960			
Slate			2960	3060			
Stray Gordon Sand			3060	3065			
Slate			3065	3083			
Gordon Sand			3086	3110			
Total Depth			3110				

Date October 14, 1955

APPROVED THE MANUFACTURERS LIGHT AND HEAT CO. Owner

By *Paul Cooper*
LAND AGENT (Title)