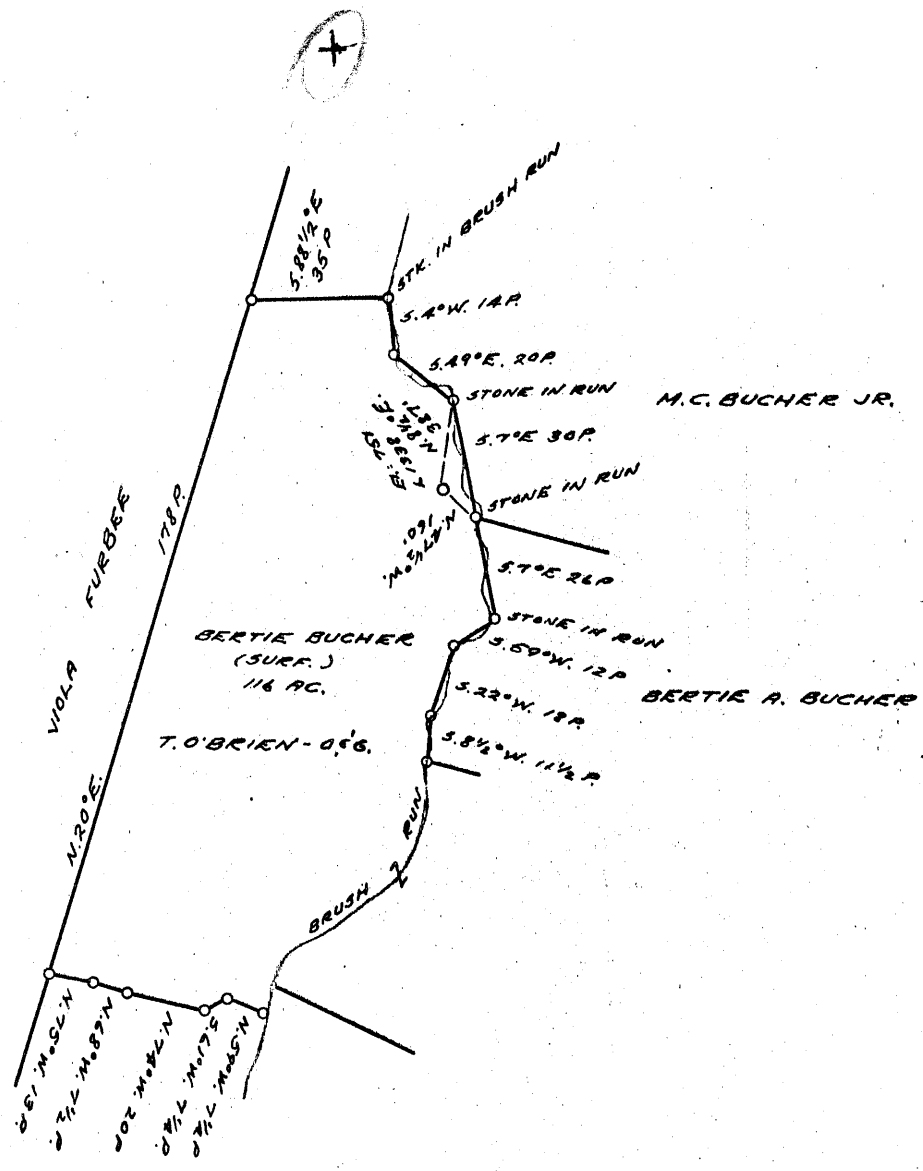


0 1 2 3 LATITUDE 35  
 -1  
 -2  
 -3  
 LONGITUDE 80 40



PART OF A TRACT OF 537 AC.

3.84  
 2.34

COAL OWNED BY \_\_\_\_\_

NEW LOCATION.....  
 DRILL DEEPER.....  
 ABANDONMENT.....

JUNE 18 1956

COMPANY THE MANUFACTURERS LIGHT & HEAT CO.  
 ADDRESS 800 UNION TRUST BLDG. PGH. PENNA.  
 FARM THOMAS O'BRIEN - O.G. (B.A. BUCHER - SURF.)  
 TRACT \_\_\_\_\_ ACRES 537 LEASE NO. 3015  
 WELL (FARM) NO. 1 SERIAL NO. 1338  
 ELEVATION (SPIRIT LEVEL) 751'  
 QUADRANGLE LITTLETON  
 COUNTY WETZEL DISTRICT GREEN  
 ENGINEER Thomas E. Ugin - J.M.  
 ENGINEER'S REGISTRATION NO. 1503  
 FILE NO. \_\_\_\_\_ DRAWING NO. Y-15-409  
 DATE 17 MAY 1956 SCALE 1" = 800'

STATE OF WEST VIRGINIA  
 DEPARTMENT OF MINES  
 OIL AND GAS DIVISION  
 CHARLESTON

WELL LOCATION MAP

File No. Wet-1024-A

+ DENOTES LOCATION OF WELL ON UNITED STATES TOPOGRAPHIC MAPS, SCALE 1 TO 62,500. LATITUDE AND LONGITUDE LINES BEING REPRESENTED BY BORDER LINES AS SHOWN.

- DENOTES ONE INCH SPACES ON BORDER LINE OF ORIGINAL TRACING.

THOMAS O'BRIEN No. 1 (1338) - M. L. & H. Co. - WET-102A-A

Latitude

Longitude

2.285  
1.55w

Topo Location

7.5' Loc. \_\_\_\_\_ 15' Loc. \_\_\_\_\_  
(calc.) \_\_\_\_\_

#255 MTW Co Rep. 1969

Company Tri-State

Farm Thos. O'Brien #2

15' Quad \_\_\_\_\_  
(sec.)

7.5' Quad Pine Grove

District Green

WELL LOCATION PLAT

County 103 Permit ~~70506~~

NOW  
1024A



STATE OF WEST VIRGINIA  
DEPARTMENT OF MINES  
OIL AND GAS DIVISION

1489

Quadrangle                       
Permit No. 1074-A

WELL RECORD

Oil or Gas Well Gas  
(KIND)

Company THE MANUFACTURERS LIGHT AND HEAT COMPANY  
 Address 800 UNION TRUST BLDG., PGH., PA.  
 Farm Thomas O'Brien Acres 421  
 Location (waters)                       
 Well No. 1338 Elev.               
 District Green County Wetzel  
 The surface of tract is owned in fee by                       
 Address                       
 Mineral rights are owned by                       
 Address                       
 Drilling commenced April, 13, 56  
 Drilling completed May 28  
 Date Shot                      From                      To                       
 With                       
 Open Flow                      /10ths Water in                      Inch  
                     /10ths Merc. in                      Inch  
 Volume                      Cu. Ft.  
 Rock Pressure                      lbs.                      hrs.  
 Oil                      bbls., 1st 24 hrs.  
 Fresh water                      feet                      feet  
 Salt water                      feet                      feet

Casing and Tubing	Used in Drilling	Left in Well	Packers
Size			Kind of Packer
16			
13			
10	182	182	Size of
8 1/4	1030	1030	
6 5/8	1863	1863	Depth set
5 3/16			
4	2603	2603	Perf. top
2			Perf. bottom
Liners Used			Perf. top
			Perf. bottom

CASING CEMENTED                      SIZE                      No. Ft.                      Date                       
 COAL WAS ENCOUNTERED AT 444 FEET                      INCHES  
                     FEET                      INCHES                      FEET                      INCHES  
                     FEET                      INCHES                      FEET                      INCHES

Formation	Color	Hard or Soft	Top	Bottom	Oil, Gas or Water	Depth Found	Remarks
Pgh. Coal			444				
Top of Big Lime			1649	1729			
Top of Kener Sand			1729	1850			
Top of Inj. Sand			1850	1950			
Top of Gordon strag			2556	2571			
Gas at			2560				
Bottom of sand			2571				
Bottom of hole			2603				

RECEIVED  
WEST VIRGINIA  
DEPT. OF MINES  
MAY 1956

OCT 26 1956

Formation	Color	Hard or Soft	Top	Bottom	Oil, Gas or Water	Depth Found	Remarks

Date May 21, 19 56

APPROVED THE MANUFACTURERS LIGHT & HEAT CO., Owner

By Walter A. Pomeroy  
LAND AGENT