

Latitude

Longitude

1.28s
.95w

Topo Location

7.5' Loc. _____ 15' Loc. _____
_____ (calc.) _____

Company A M Snider

Farm Hogo HRS

15' Quad _____
(sec.)

7.5' Quad Pine Grove

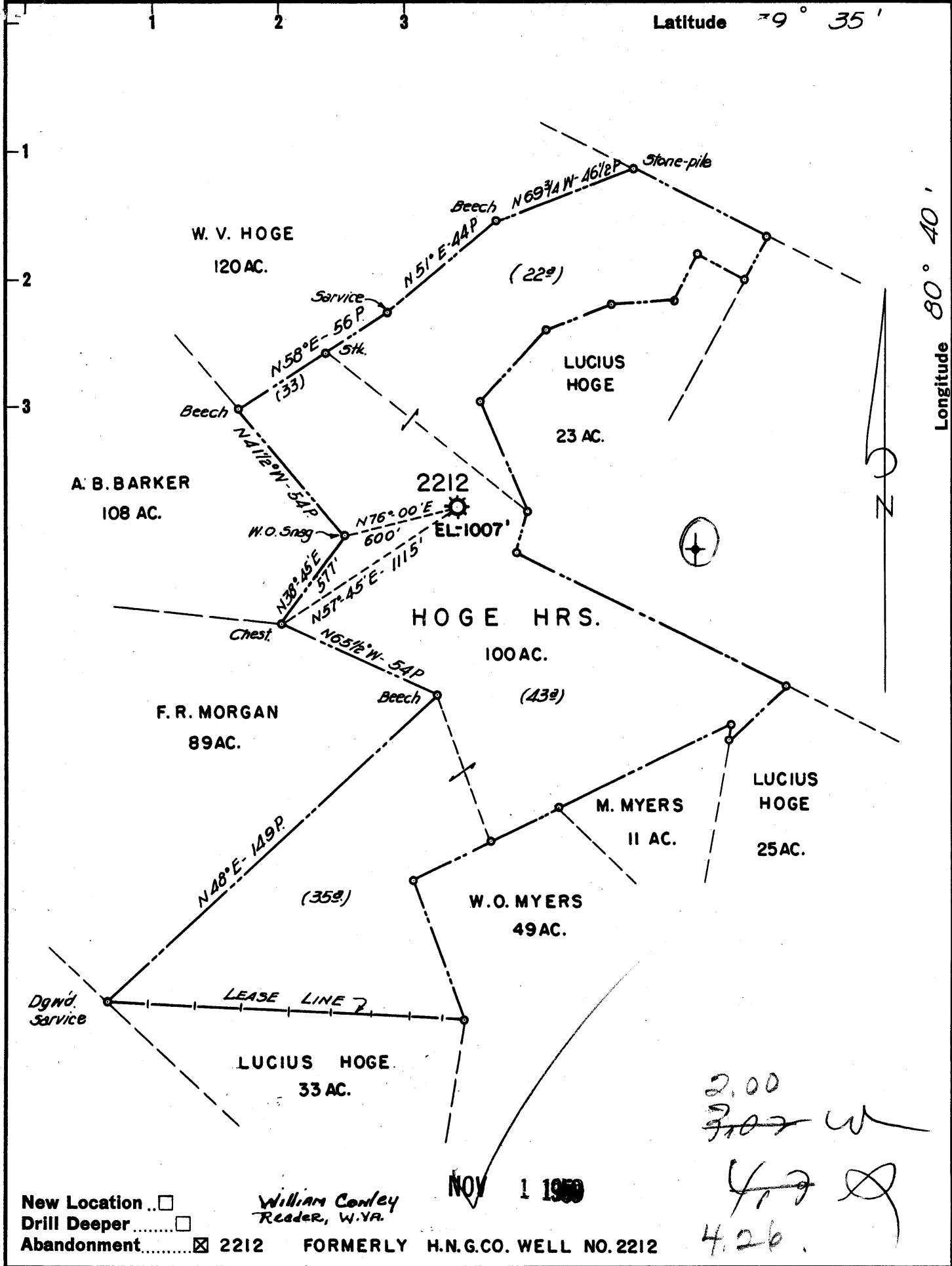
District Green

WELL LOCATION PLAT

County 103 Permit 31103

Latitude 39° 35'

Longitude 80° 40'



NOV 1 1959

William Conley
Reader, W.V.A.

New Location
 Drill Deeper
 Abandonment 2212 FORMERLY H.N.G.CO. WELL NO. 2212

2.00
~~3.02~~ W
 4.26
 4.26

Company A. M. SNIDER
 Address HUNDRED, W. VA.
 Farm HOGE HRS.
 Tract _____ Acres 100 Lease No. 5409
 Well (Farm) No. _____ Serial No. 2212
 Elevation (Spirit Level) 1007'
 Quadrangle LITTLETON
 County WETZEL District GREEN
 Engineer HENRY A. HAIN
 Engineer's Registration No. 3150
 File No. A. M. S. Drawing No. _____
 Date 9-8-59' Scale 1" = 40 POLES

STATE OF WEST VIRGINIA
 DEPARTMENT OF MINES
 OIL AND GAS DIVISION
 CHARLESTON

WELL LOCATION MAP
 FILE NO. Wet-1103-A

+ Denotes location of well on United States Topographic Maps, scale 1 to 62,500, latitude and longitude lines being represented by border lines as shown.
 - Denotes one inch spaces on border line of original tracing.

HOGE HEIRS NO. 2212 (Hope) - A. M. SNIDER - WET-1103-A