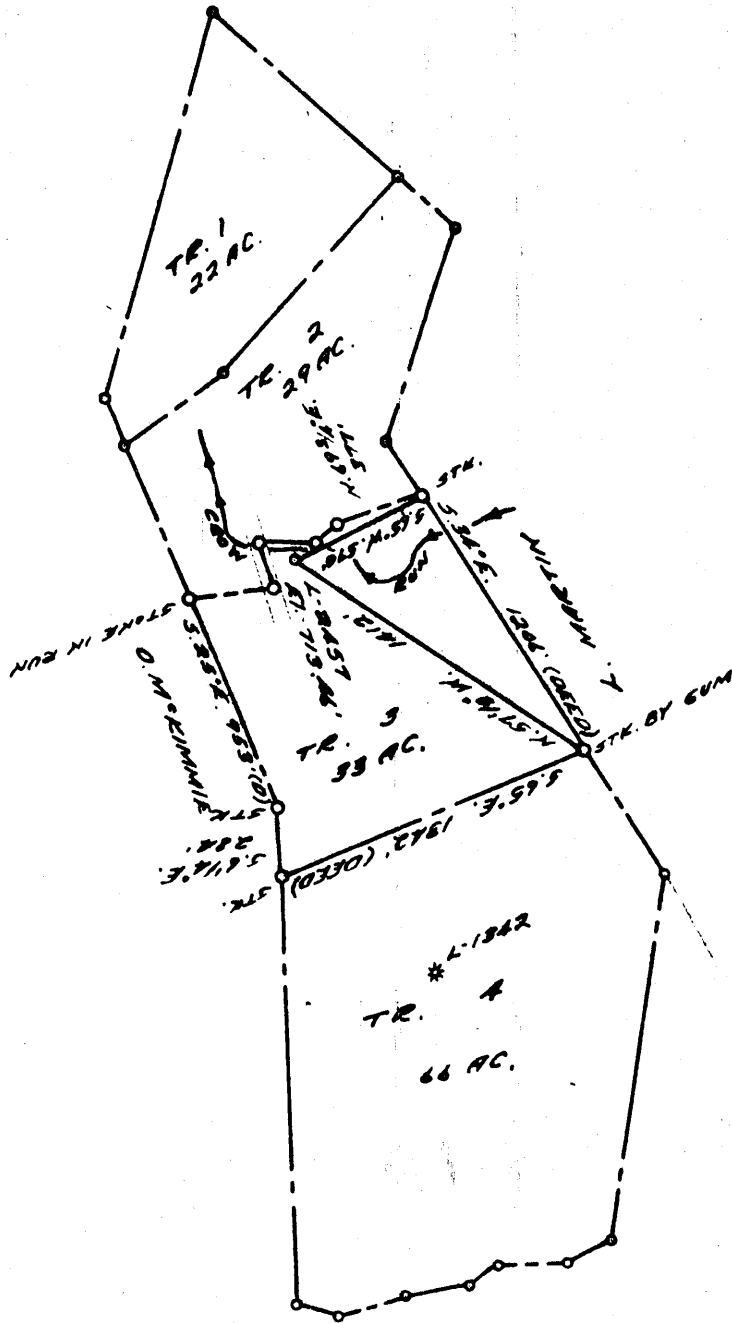


LATITUDE 39 ° 35 ' 1

LONGITUDE 80 ° 40'



2,92W
1,985

COAL OWNED BY

- NEW LOCATION
- RECONDITION
- DRILL DEEPER
- ABANDONMENT

"I, the undersigned, hereby certify that this map is correct to the best of my knowledge and belief and shows all the information required by paragraph 6 of the rules and regulations of the oil and gas section of the mining laws of West Virginia."
 Minimum degree of accuracy is one part in 200'

Signed G. Z. Gubchaw (J.M.)
 W. Va. 2641

COMPANY THE MANUFACTURERS LIGHT & HEAT
 ADDRESS 800 UNION TR. BLDG. PGH. PA.
 FARM F.M. STREIGHT ET AL
 MAP P25/21 ACRES 112 LEASE NO. 301A
 WELL (FARM) NO. 2 SERIAL NO. 2457
 ELEVATION (SPIRIT LEVEL) 719.46'
 QUADRANGLE LITTLETON - SW
 COUNTY WETZEL DISTRICT GREEN
 POINT OF PROVEN ELEVATION US65 CIAO

STATE OF WEST VIRGINIA
 DEPARTMENT OF MINES
 OIL AND GAS DIVISION
 CHARLESTON
 WELL LOCATION MAP
 FILE NO. WET-1190-A

FILE NO. _____ DRAWING NO. Y-28-86
 DATE 18 JAN. 1966 SCALE 1" = 800'

+ DENOTES LOCATION OF WELL ON UNITED STATES TOPOGRAPHIC MAPS, SCALE 1 TO 62,500. LATITUDE AND LONGITUDE LINES BEING REPRESENTED BY BORDER LINES AS SHOWN.
 - DENOTES ONE INCH SPACES ON BORDER LINE OF ORIGINAL TRACINGS.