

W

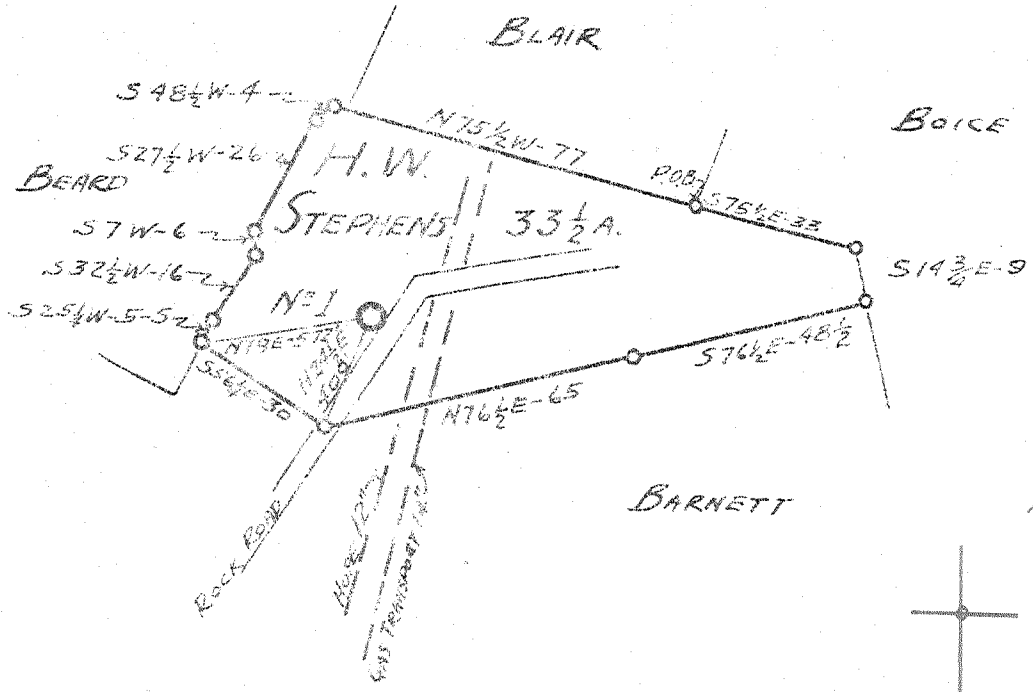
P

Latitude 39 05

39 05

81 32 30
81 30'

Longitude



7.5
2.38W
2.20S

2.22-S
2.24-S of 39° 05'
2.73-W of 81° 30'
2.69-W
7 C (6-5)

New Location
Drill Deeper
Abandonment

Company GLENN W. ROBERTS
 Address ELIZABETH, W. VA.
 Farm H.W. STEPHENS
 Tract 33 1/2 Acres Lease No. _____
 Well (Farm) No. ONE Serial No. _____
 Elevation (Spirit Level) 1070'
 Quadrangle BELLEVILLE **SE** / Rock point
 County WIRT District TUCKER
 Engineer Glenn W. Roberts
 Engineer's Registration No. 860
 File No. _____ Drawing No. _____
 Date 1-7-50 Scale 1" = 660'

STATE OF WEST VIRGINIA
DEPARTMENT OF MINES
OIL AND GAS DIVISION
CHARLESTON

WELL LOCATION MAP

FILE NO. WIRT-286

+ Denotes location of well on United States Topographic Maps, scale 1 to 62,500, latitude and longitude lines being represented by border lines as shown.

- Denotes one inch spaces on border line of original tracing.

6-0 279

Deep Well



STATE OF WEST VIRGINIA
DEPARTMENT OF MINES
OIL AND GAS DIVISION 21

Kettleville

WELL RECORD

Permit No. WIR-286

Oil or Gas Well Dry
(KIND)

Company Glen W. Roberts
Address Elizabeth, W. Va.
Farm H. W. Stephens Acres 33 1/2
Location (waters) Tuckers Creek
Well No. 1 Elev. 1070
District Tucker County Wirt
The surface of tract is owned in fee by H. W. Stephens
Address Windy, W. Va.
Mineral rights are owned by H. W. Stephens
Address Windy, W. Va.
Drilling commenced January 17, 1950
Drilling completed April 12, 1950
Date Shot _____ From _____ To _____
With _____
Open Flow _____ /10ths Water in _____ Inch
_____ /10ths Merc. in _____ Inch
Volume _____ Cu. Ft.
Rock Pressure _____ lbs. _____ hrs.
Oil _____ bbls., 1st 24 hrs.
Fresh water _____ feet _____ feet
Salt water 2055-2275 feet 5403-5409 feet

Casing and Tubing	Used in Drilling	Left in Well	Packers
Size			
16			Kind of Packer
18			
10	717		Size of
8 1/2	1430		
6 1/2	2326		Depth set
5 3/16	5296 Cemented		
8			Perf. top
2			Perf. bottom
Liners Used			Perf. top
			Perf. bottom

CASING CEMENTED _____ SIZE _____ No. Ft. _____ Date _____

COAL WAS ENCOUNTERED AT _____ FEET _____ INCHES
_____ FEET _____ INCHES _____ FEET _____ INCHES
_____ FEET _____ INCHES _____ FEET _____ INCHES

Formation	Color	Hard or Soft	Top	Bottom	Oil, Gas or Water	Depth Found	Remarks
Surface			0	20			
Slate			20	70			
Rock	Red		70	145			
Slate			145	150			
Rock	Red		150	200			
Slate			200	220			
Rock	Red		220	280			
Slate			280	290			
Rock	Red		290	350			
Slate			350	370			
Rock	Red		370	425			
Slate			425	445			
Rock	Red		445	500			
Slate			500	530			
Rock	Red		530	615			
Slate	Blue		615	628			
Rock	Red		628	645			
Slate & Shells			645	660			
Rock	Red		660	708			
Slate & Shells			708	725			
Rock	Red		725	745			
Slate			745	775			
Rock	Red		775	780			
Slate & Shells			780	810			
Rock	Red		810	838			
Slate			838	860			
Lime	White		860	885			
Slate & Shells			885	945			
Slate	Black		945	960			
Slate & Shells			960	1005			
Rock	Red		1005	1030			
Slate & Shells			1030	1050			
Sand			1050	1072			
Slate			1072	1095			
Rock	Red		1095	1232			
Slate			1232	1266			
Rock	Red		1266	1328			
Slate & Shells			1328	1348			
Rock	Red		1348	1355			

Formation	Color	Hard or Soft	Top	Bottom	Oil, Gas or Water	Depth Found	Remarks
Lime, Gritty			1355	1370			
Slate	White		1370	1380			
Slate	Black		1380	1390			
Slate & Shells			1390	1445			
Sand			1445	1495			
Slate	Blue		1495	1560			
Lime	Grey		1560	1570			
Sand	Grey		1570	1585			
Slate	Black		1585	1595			
Lime, Gritty			1595	1608			
Sand			1608	1657			
Slate			1657	1662			
Lime			1662	1670			
Sand	Grey		1670	1740			
Slate	Blue		1740	1770			
Sand			1770	1820			
Broken Sand			1820	1960			
Sand			1960	2258			
Big Injun Sand			2258	2285			
Slate	White		2285	2287			
Lime Shell			2287	2295			
Blue Slate & Lime			2295	2310			
Lime, Sandy			2310	2318			
Slate	White		2318	2320			
Lime			2320	2338			
Slate & Lime Shell			2338	2400			
Slate			2400	2605			
Shale	Brown - <i>Copper Sh.</i>		2605	2615			
Berea Shell			2615	2625			
Slate & Shells			2625	2925			
Lime			2925	2950			
Slate & Shells			2950	3050			
Slate	White		3050	3300			
Slate	Blue		3300	3418			
Slate	White		3418	3640			
Slate	Blue		3640	3750			
Shale	Grey		3750	3815			
Slate & Lime Shells			3815	4150			
Shale	Brown		4150	4475			
Slate	Blue		4475	4910			
Shale	Brown		4910	5170			
Shale	Red Brown		5170	5190			
				5190	Gas, Smell	5120	
				5190	Cable measure =	5272	Depthometer.
✓ Lime - <i>ONDS</i>	Grey		5272	5391			
✓ Sand - <i>Onkang</i>	Grey		5391	5409	Water	5403-5409	
				475			
				5272	5391		
				1070	1070		
				-4202	-4321		

Date April 14, 1959

APPROVED Glenn Roberts, Owner