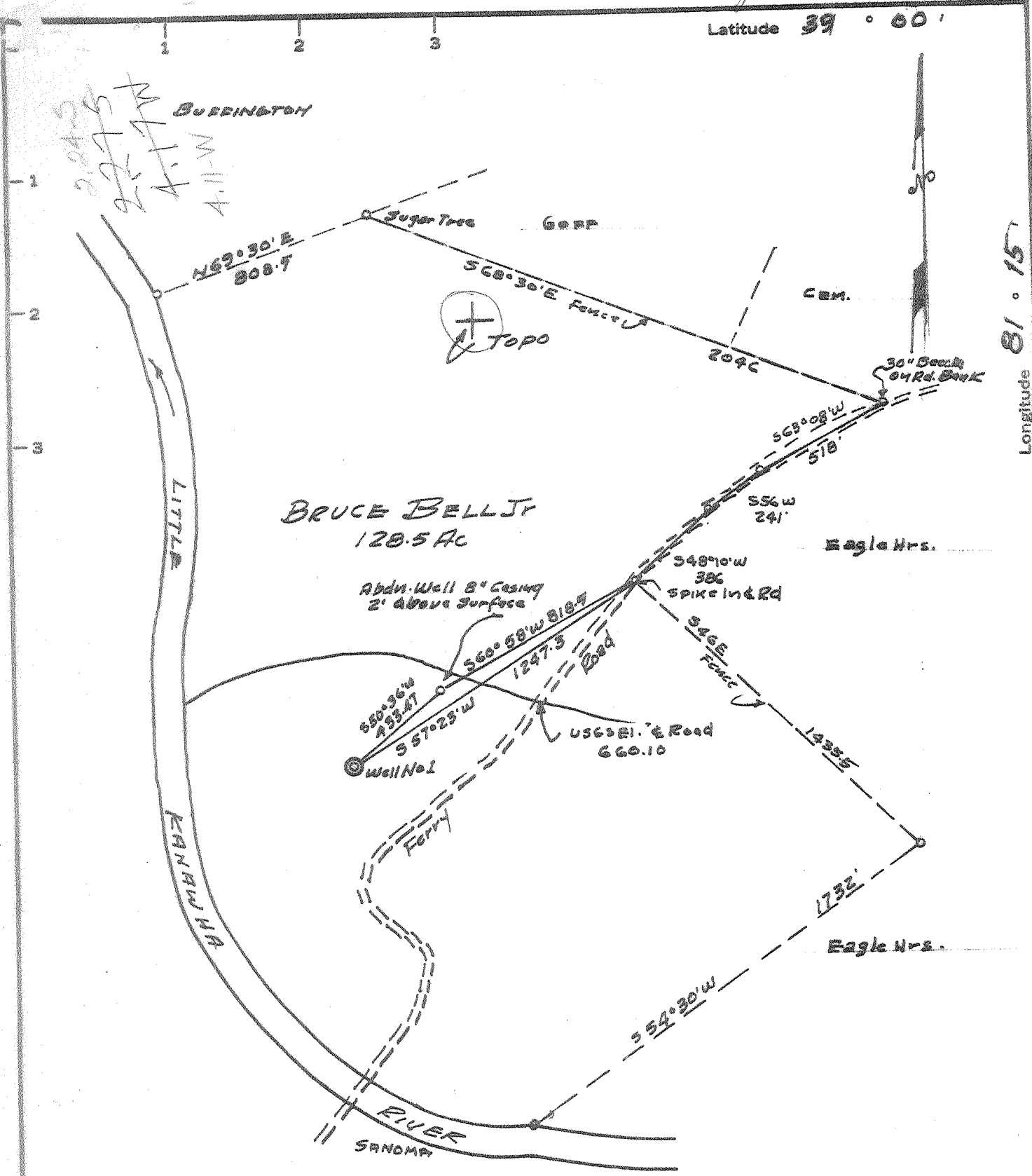


Latitude **39° 00'**

Longitude **81° 15'**



MINIMUM ERROR OF CLOSURE 1' IN 200

SOURCE OF ELEVATION USGS Elev. As Shown on Plat  
660.1 ± of Ferry Road

New Location   
 Drill Deeper   
 Abandonment

"I, THE UNDERSIGNED, HEREBY CERTIFY THAT THIS MAP IS CORRECT TO THE BEST OF MY KNOWLEDGE AND BELIEF AND SHOWS ALL THE INFORMATION REQUIRED BY PARAGRAPH 6 OF THE RULES AND REGULATIONS OF THE OIL AND GAS SECTION OF THE MINING LAWS OF WEST VIRGINIA."

Company WBYA Oil Co  
 Address 906 George Powell Union Trust Bldg. Parkersburg, W. Va.  
 Farm BRUCE BELL JR  
 Tract \_\_\_\_\_ Acres 120.5 Lease No. \_\_\_\_\_  
 Well (Farm) No. 1 Serial No. \_\_\_\_\_  
 Elevation (Spirit Level) 681.5  
 Quadrangle SPENCER (NE)  
 County WIRT District Burning Springs  
 Engineer Raymond J. Spivey  
 Engineer's Registration No. 4801  
 File No. \_\_\_\_\_ Drawing No. \_\_\_\_\_  
 Date Dec 1, 1967 Scale 1" = 500

STATE OF WEST VIRGINIA  
 DEPARTMENT OF MINES  
 OIL AND GAS DIVISION  
 CHARLESTON

WELL LOCATION MAP  
 FILE NO. WIR-545-P

+ Denotes location of well on United States Topographic Maps, scale 1 to 62,500, latitude and longitude lines being represented by border lines as shown.  
 - Denotes one inch spaces on border line of original tracing.

3-0 Newburg test



STATE OF WEST VIRGINIA  
DEPARTMENT OF MINES  
OIL AND GAS DIVISION

Rotary  *10*  
Spudder  *oil 300*  
Cable Tools   
Storage

**DRY**  
(KIND)  
*gas shot*

Quadrangle Spencer  
Permit No. WIR - 545

**WELL RECORD**

Oil or Gas Well

Company Weva Oil Company  
Address Union Trust Building, Parkersburg, W. Va.  
Farm Bruce Bell, Jr. Acres 128.5  
Location (waters) Little Kanawha River  
Well No. One Elev. 681.5  
District Burning Springs County Wirt  
The surface of tract is owned in fee by Bruce Bell, Jr  
Address Sanoma, W. Va.  
Mineral rights are owned by Same  
Address \_\_\_\_\_  
Drilling commenced 12/9/67  
Drilling completed 2/29/68  
Date Shot From \_\_\_\_\_ To \_\_\_\_\_  
With \_\_\_\_\_  
Open Flow /10ths Water in \_\_\_\_\_ Inch  
/10ths Merc. in \_\_\_\_\_ Inch  
Volume \_\_\_\_\_ Cu. Ft.  
Rock Pressure \_\_\_\_\_ lbs. \_\_\_\_\_ hrs.  
Oil \_\_\_\_\_ bbls., 1st 24 hrs.  
WELL ACIDIZED (DETAILS) \_\_\_\_\_  
WELL FRACTURED (DETAILS) \_\_\_\_\_

Casing and Tubing	Used in Drilling	Left in Well	Packers
Size			Kind of Packer
16			
13			Size of
#9 5/8"	1600	1600	Depth set
8 1/4 Casing New 36'			Perf. top
6 3/4			Perf. bottom
5 3/16			Perf. top
4 1/2			Perf. bottom
3			
2			
Liners Used			

Attach copy of cementing record.  
CASING CEMENTED 9 5/8 SIZE No. Ft. 12/18/67 Date  
Amount of cement used (bags) 200  
Name of Service Co. Halliburton  
COAL WAS ENCOUNTERED AT 739 FEET 36 INCHES  
FEET INCHES FEET INCHES  
FEET INCHES FEET INCHES

RESULT AFTER TREATMENT (Initial open Flow or bbls.) No test taken - well abandoned as a safety pre-caution  
ROCK PRESSURE AFTER TREATMENT \_\_\_\_\_ HOURS \_\_\_\_\_  
Fresh Water \_\_\_\_\_ Feet \_\_\_\_\_ Salt Water \_\_\_\_\_ Feet \_\_\_\_\_  
Producing Sand \_\_\_\_\_ Depth \_\_\_\_\_

Formation	Color	Hard or Soft	Top	Bottom	Oil, Gas or Water	Depth	Remarks
Soil			0	50			
Red Rock			50	70			
Slate Shells			70	450			
Sand			450	470			
Shale			470	550			
Sand			550	570			
Shale			570	650			
Sand			650	690			
Sahle			690	800			
Sand			800	915			
Shale			915	1080			
Sand			1080	1260			
Lime <i>8 LINE</i>			1260	1320			
Sand <i>PIC IN JON - K...</i>			1320	1340			
Sahle			1340	1360			
Sand - <i>Imp...</i>			1360	1375			
Shales and Siltstones			1375	5320			
Limestone <i>Onondaga</i>			5329	5565			
Sandstone <i>Oriskany</i>			5565	5610			
Dolomite, Anhydrite			5610	6550			
Shales, Sands <i>Newburg</i>			6550	6568			
				535			

*6550*  
*682*  
*-5868*  
*5329*  
*692*  
*4637*  
*5610*  
*692*  
*4918*  
Est 10bopd 2890-2900  
*Wellsburg, Tonoloway, Wills Creek*

Note: This well blew wild for several days and finally was killed. Estimated open flow was 15-18 MMCF.

