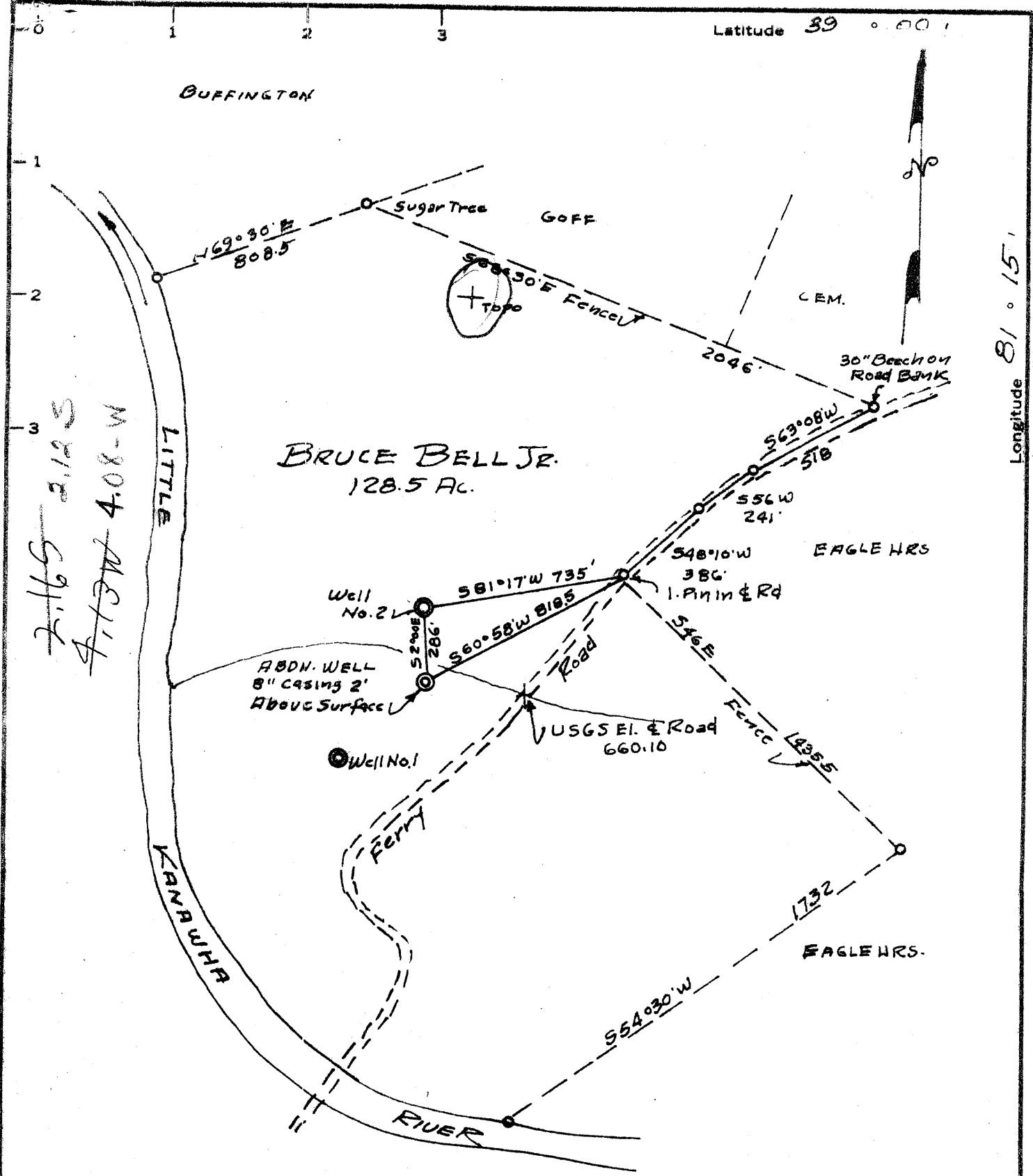


Latitude 39 ° 00 '

Longitude 81 ° 15 '



MINIMUM ERROR OF CLOSURE 1' IN 200

SOURCE OF ELEVATION USGS ELEV AS SHOWN ON PLAT 660.10

New Location
 Drill Deeper
 Abandonment

"I, THE UNDERSIGNED, HEREBY CERTIFY THAT THIS MAP IS CORRECT TO THE BEST OF MY KNOWLEDGE AND BELIEF AND SHOWS ALL THE INFORMATION REQUIRED BY PARAGRAPH 6 OF THE RULES AND REGULATIONS OF THE OIL AND GAS SECTION OF THE MINING LAWS OF WEST VIRGINIA."

Company BELCO PETROLEUM INC
 Address 630-3rd AVE. New York NY
 Farm BRUCE BELL JR.
 Tract _____ Acres 128.5 Lease No. _____
 Well (Farm) No. 2 Serial No. _____
 Elevation (Spirit Level) 667.70
 Quadrangle SPENCER NE
 County WIRT District BURNING SPRINGS
 Engineer Raymond S. Lopez
 Engineer's Registration No. 4801
 File No. _____ Drawing No. _____
 Date MAY 7, 1968 Scale 1"=500

STATE OF WEST VIRGINIA
 DEPARTMENT OF MINES
 OIL AND GAS DIVISION
 CHARLESTON

WELL LOCATION MAP
 FILE NO. WIR-551
~~Some loc on WIR-545~~
 + Denotes location of well on United States Topographic Maps, scale 1 to 62,500, latitude and longitude lines being represented by border lines as shown.
 - Denotes one inch spaces on border line of original tracing.

Formation	Color	Hard or Soft	Top	Bottom	Oil, Gas or Water	Depth Found	Remarks
							13 3/8" casing cemented to surface with 75 sacks of regular cement 3% CaCl
							9 5/8" casing cemented to surface with 850 sacks of 50-50 lite poz
							5 1/2" casing cemented to 5470' with 225 sacks of 50-50 lite poz cement

Date July 23, 1968, 18

APPROVED Belco Petroleum Corp., Owner

By Denzil L. Prather
Denzil L. Prather (Title)