

WELL # PIEDMONT - BUFFINGTON #1

11-1-07

PERFORATIONS:

Stage 1, Perforations: 21 holes from 4300' to 4362'

Stage 2, Perforations: 21 holes from 2718' to 2728'

Stage 3, Perforations: _____ holes from _____ to _____

Stage 4, Perforations: _____ holes from _____ to _____

FRACTURING:

1ST STAGE: LOWER GRAY SHALE

Perforations from 4300' - 4362', Acid 500 gal. 15% HCL,
Breakdown @ 981 PSI, Avg. Rate 28 BPM, 75 Q. FOAM
ATP 1720 PSI, Total H₂O 216 Bbl., Total sand 35,000 # 1 PPA - 3 PPA
Total N₂ 328,000 Scf. I.S.I.P. 1400 PSI 15 min. 1137 PSI
10

2ND STAGE: UPPER GRAY SHALE

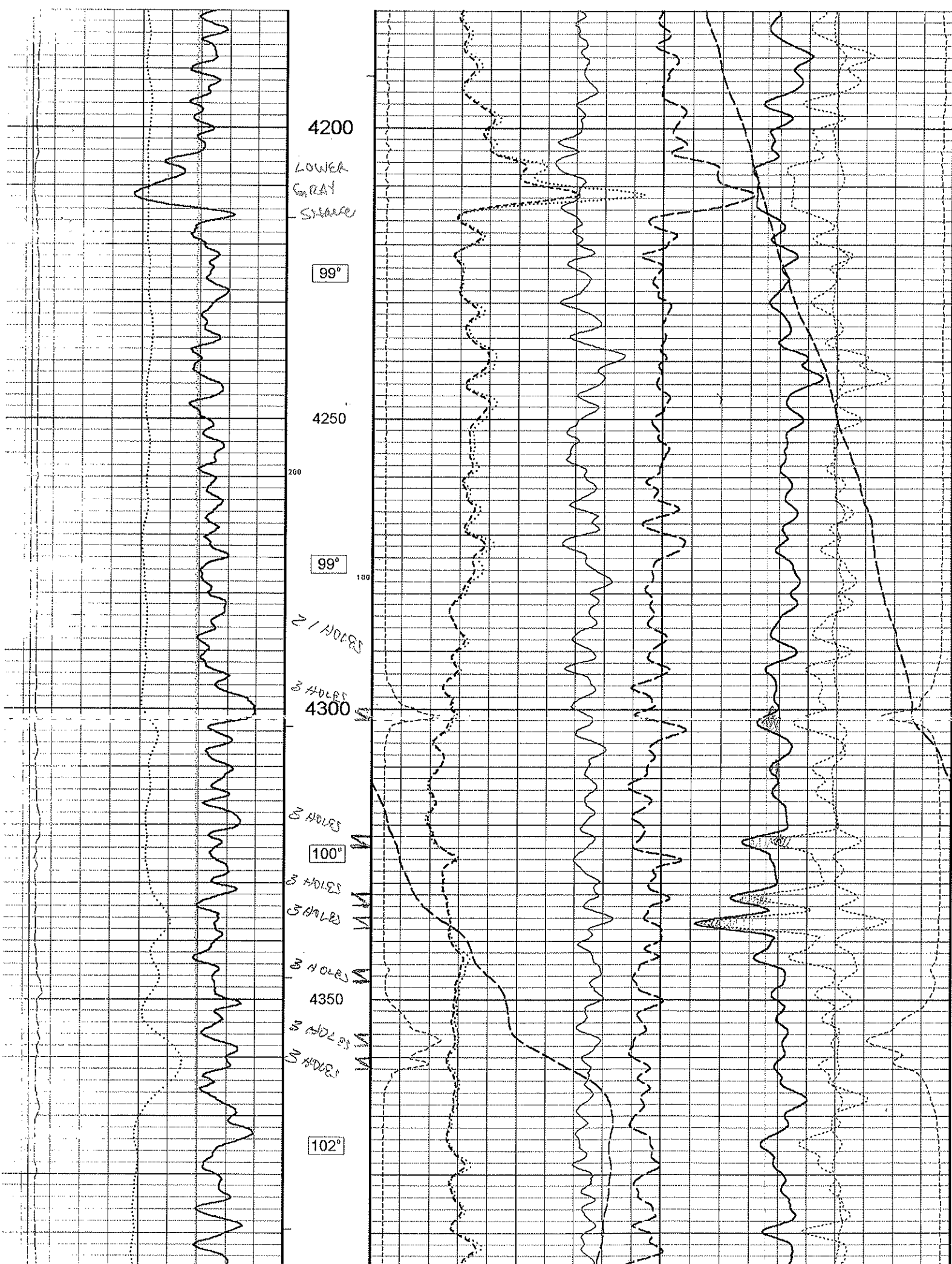
Perforations from 2718' - 2728', Acid 500 gal. 15% HCL,
Breakdown @ 1790 PSI, Avg. Rate 28 BPM, 75 Q. FOAM
ATP 1865 PSI, Total H₂O 161 Bbl., Total sand 30,000 # 1 PPA - 3 PPA
Total N₂ 375,000 Scf. I.S.I.P. 875 PSI 15 min. 750 PSI
10

3RD STAGE: _____

Perforations from _____ - _____, Acid _____ gal. _____ HCL,
Breakdown @ _____ PSI, Avg. Rate _____ BPM,
ATP _____ PSI, Total H₂O _____ Bbl., Total sand _____ #
Total N₂ _____ Scf. I.S.I.P. _____ 15 min. _____

4TH STAGE: _____

Perforations from _____ - _____, Acid _____ gal. _____ HCL,
Breakdown @ _____ PSI, Avg. Rate _____ BPM,
ATP _____ PSI, Total H₂O _____ Bbl., Total sand _____ #
Total N₂ _____ Scf. I.S.I.P. _____ 15 min. _____



4200

LOWER
GRAY
SHALES

99°

4250

200

99°

100

BRIDGE

3 HOLES

4300

3 HOLES

100°

3 HOLES

3 HOLES

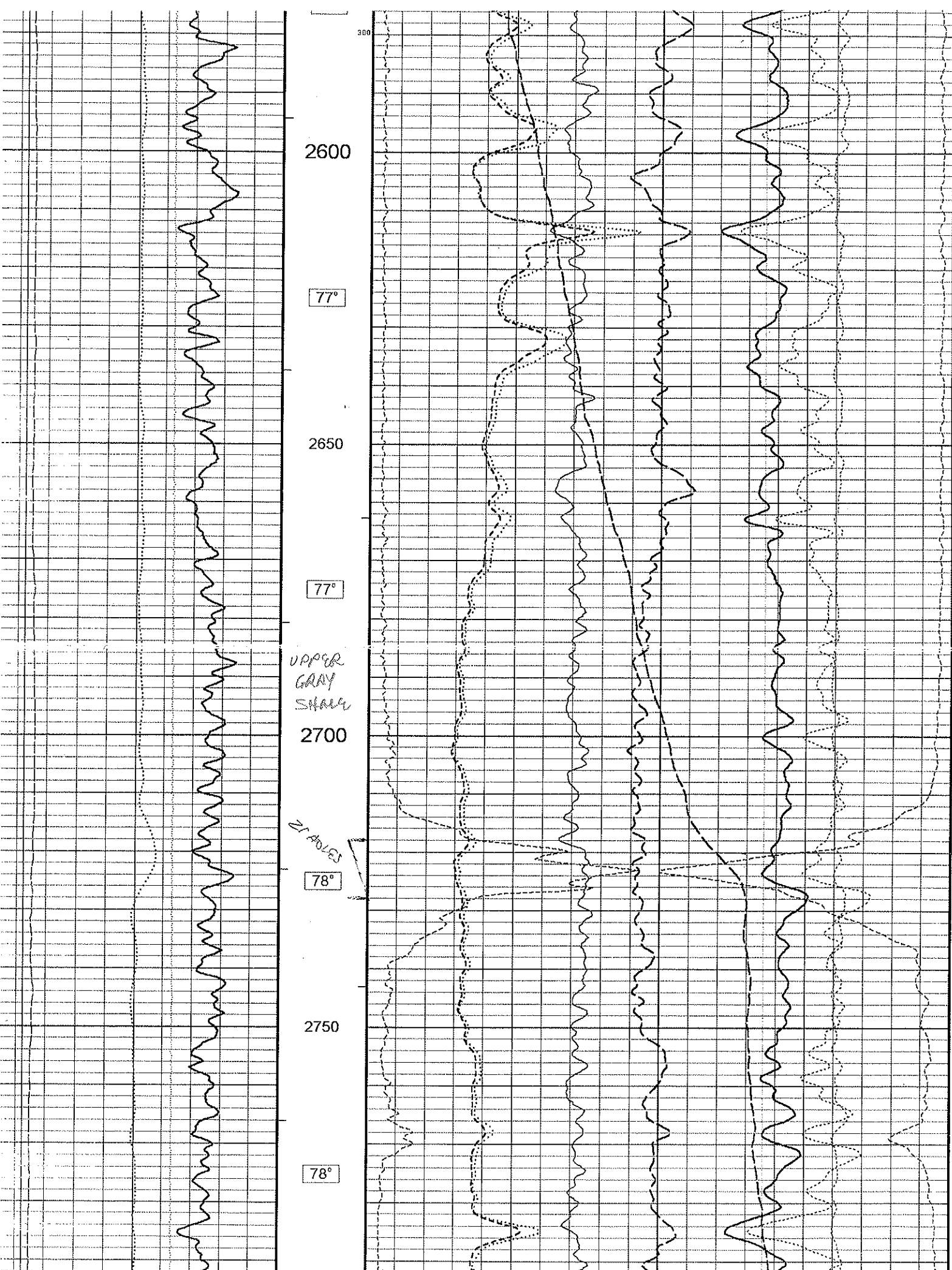
3 HOLES

4350

3 HOLES

3 HOLES

102°



Piedmont-Buffington #1
Permit #: 47-105-01347
Wirt County, WV

FORMATION TOPS:

Salt Sands	670'-1122'
Sand & Shale	1122'-1154'
Maxon	1154'-1279'
Big Lime	1279'-1379'
Big Injun	1379'-1407'
Sand & Shale	1407'-1804'
Berea	1804'-1806'
Shale	1806'-2144'
Fifth Sand	2144'-2178'
Shale	2178'-3049'
Lower Huron	3049'-3983'
Java	3983'-4141'
Angola	4141'-4472'
Rhinestreet	4472'-5052'
Marcellus Shale	5052'-5157'
TD	5157'

1st Perforated interval: 4300'-4362' (21 holes) – Lower Gray Shale

1st Stimulation:

75Q Foamfrac w/ 216 bbls. water, 328,000 scf N2 and 23,800# of 20/40 sand @ 1-3 ppa
Ave. psi: 1720 psi
Ave. rate: 28.0 bpm foam

2nd Perforated interval: 2718'-2728' (43 holes) – Upper Gray Shale

2nd Stimulation:

75Q Foamfrac w/ 161 bbls. water, 375,000 scf N2 and 35,000# of 20/40 sand @ 1-3 ppa
Ave. psi: 1865 psi
Ave. rate: 28.0 bpm foam