

WELL # Piedmont-MJ#1

PERFORATIONS:

Stage 1, Perforations: 25 holes from 1894' to 1902'

Stage 2, Perforations: \_\_\_\_\_ holes from \_\_\_\_\_ to \_\_\_\_\_

Stage 3, Perforations: \_\_\_\_\_ holes from \_\_\_\_\_ to \_\_\_\_\_

Stage 4, Perforations: \_\_\_\_\_ holes from \_\_\_\_\_ to \_\_\_\_\_

FRACTURING:

1<sup>ST</sup> STAGE: KEENAR / INJUN

Perforations from 1894' - 1902', Acid 400 gal. 15% HCL,  
Breakdown @ 2220 PSI, Avg. Rate 12.9 BPM, FB-1.12 PSI/FT  
ATP 1765 PSI, Total H<sub>2</sub>O 539 Bbl., Total sand 25,500 # 1/2-2 1/2 GMA  
Total N<sub>2</sub> NA Scf. I.S.I.P. 2030 # 15 min. 1320 #  
10  
*FLOWBACK @ 1315 HRS. ON 4" CHARGE*

2<sup>ND</sup> STAGE: \_\_\_\_\_

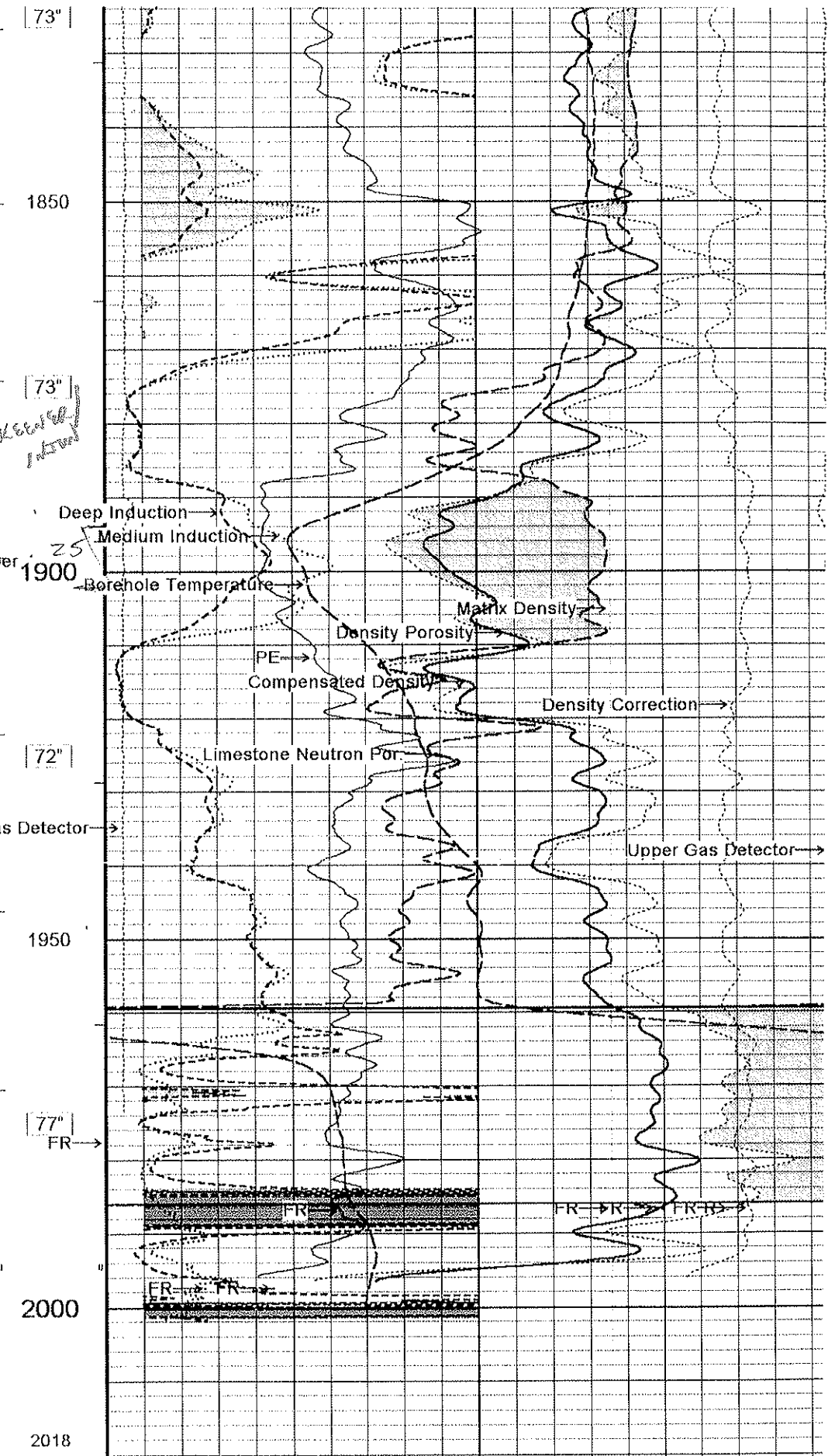
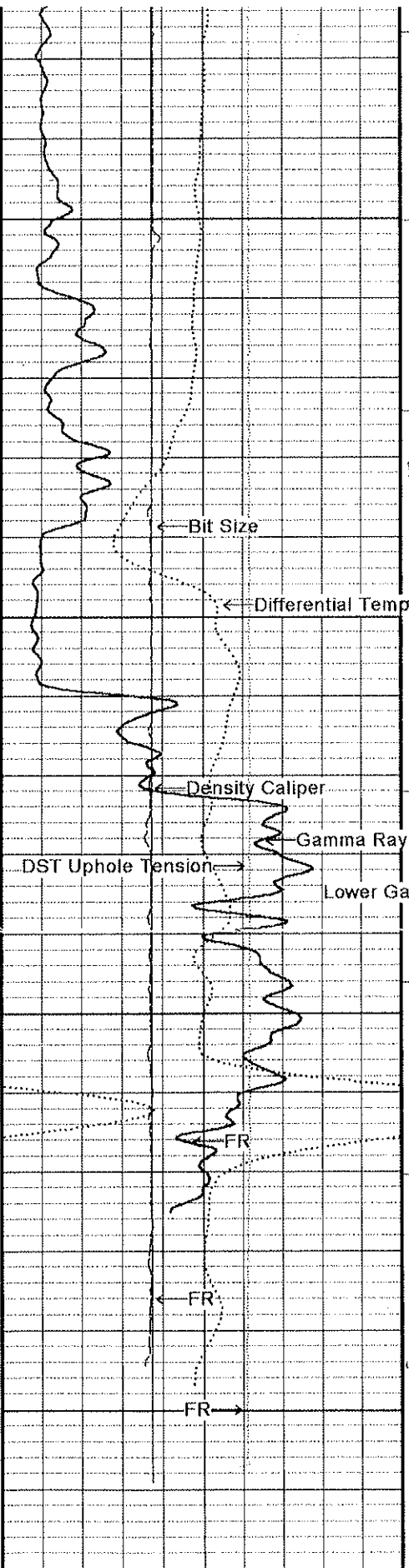
Perforations from \_\_\_\_\_ - \_\_\_\_\_, Acid \_\_\_\_\_ gal. \_\_\_\_\_ HCL,  
Breakdown @ \_\_\_\_\_ PSI, Avg. Rate \_\_\_\_\_ BPM,  
ATP \_\_\_\_\_ PSI, Total H<sub>2</sub>O \_\_\_\_\_ Bbl., Total sand \_\_\_\_\_ #  
Total N<sub>2</sub> \_\_\_\_\_ Scf. I.S.I.P. \_\_\_\_\_ 15 min. \_\_\_\_\_

3<sup>RD</sup> STAGE: \_\_\_\_\_

Perforations from \_\_\_\_\_ - \_\_\_\_\_, Acid \_\_\_\_\_ gal. \_\_\_\_\_ HCL,  
Breakdown @ \_\_\_\_\_ PSI, Avg. Rate \_\_\_\_\_ BPM,  
ATP \_\_\_\_\_ PSI, Total H<sub>2</sub>O \_\_\_\_\_ Bbl., Total sand \_\_\_\_\_ #  
Total N<sub>2</sub> \_\_\_\_\_ Scf. I.S.I.P. \_\_\_\_\_ 15 min. \_\_\_\_\_

4<sup>TH</sup> STAGE: \_\_\_\_\_

Perforations from \_\_\_\_\_ - \_\_\_\_\_, Acid \_\_\_\_\_ gal. \_\_\_\_\_ HCL,  
Breakdown @ \_\_\_\_\_ PSI, Avg. Rate \_\_\_\_\_ BPM,  
ATP \_\_\_\_\_ PSI, Total H<sub>2</sub>O \_\_\_\_\_ Bbl., Total sand \_\_\_\_\_ #  
Total N<sub>2</sub> \_\_\_\_\_ Scf. I.S.I.P. \_\_\_\_\_ 15 min. \_\_\_\_\_



Gamma Ray		
API		
0	100	200
200	300	400

Upper Gas Detector			
1000	750	500	250
10000	7500	5000	2500

Piedmont-MJ #1  
Permit #: 47-105-01349  
Wirt County, WV

FORMATION TOPS:

Maxon	1593'-1732'
Little Lime	1732'-1741'
Pencil Cave	1741'-1747'
Big Lime	1747'-1860'
Keener	1860'-1910'
Big Injun	1910'-1942'
Sand & Shale	1942'-2006'
TD	2006'

Perforated interval: 1894'-1902' (25 holes)

Stimulation:

Waterfrac w/ 539 bbls. water and 25,500# of 20/40 sand @ ½ - 2½ ppa  
Ave. psi: 1765 psi  
Ave. rate: 12.9 bpm