

Latitude 39 10

Longitude 81 15

Floyd Nelson

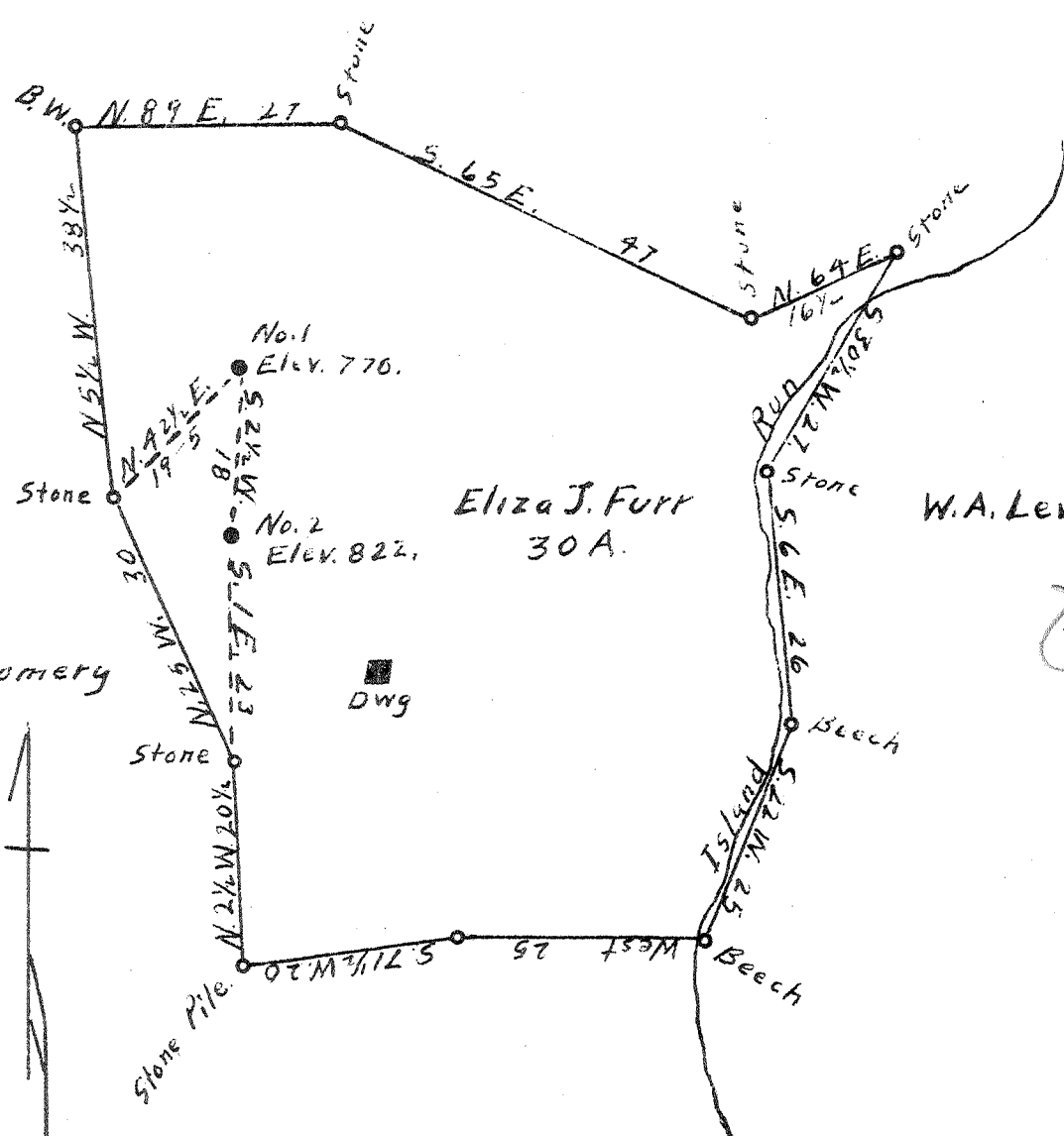
John Shore

Chas. Montgomery

Eliza J. Furr  
30 A.

W.A. Lewis

E. A. Rineheart. Rec.



New Location

Drill Deeper

Abandonment

5.385  
0.70 W

5.475  
0.70 W

Company Glenn L. Haight

Address Beatrice, W. Va.

Farm Eliza J. Furr

Tract \_\_\_\_\_ Acres 30 Lease No. \_\_\_\_\_

Well (Farm) No. 1 & 2 Serial No. \_\_\_\_\_

Elevation (Spirit Level) 770, 822.

Quadrangle Elizabeth

County Wirt District Clay

Engineer A. K. Whitfall

Engineer's Registration No. Co. Surveyor, Ritchie, Co.

File No. \_\_\_\_\_ Drawing No. \_\_\_\_\_

Date Aug. 20, 1942 Scale 1" = 20 Poles

STATE OF WEST VIRGINIA  
DEPARTMENT OF MINES  
OIL AND GAS DIVISION  
CHARLESTON

WELL LOCATION MAP  
FILE NO. WIR - 31-A - # 1  
WIR - 32-A # 2

+ Denotes location of well on United States Topographic Maps, scale 1 to 62,500, latitude and longitude lines being represented by border lines as shown.

- Denotes one inch spaces on border line of original tracing.