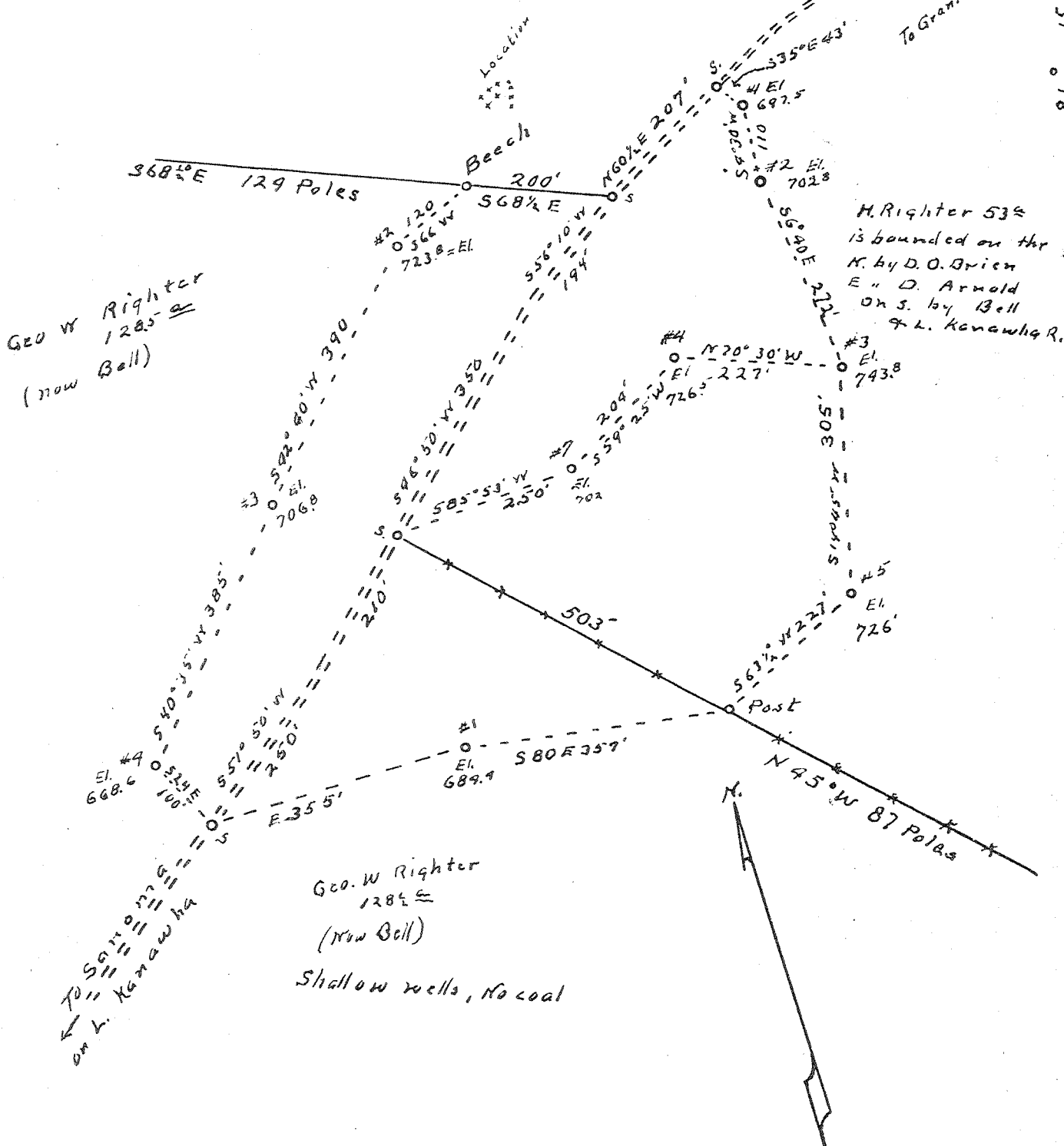


Latitude 39° 00'

Longitude 81° 15'

Note: #3 Bell farm  
is bounded on N. by Monroehanas  
on W. & S. by L. Kanawha River.



- New Location...
- Drill Deeper...
- Abandonment...

Company C. E. Beard more  
 Address 809 5th St. Marietta, Ohio  
 Farm #B. Bell 128 1/2 & H. Richter 53  
 Tract \_\_\_\_\_ Acres 128 1/2 Lease No. \_\_\_\_\_  
 Well (Farm) No. \_\_\_\_\_ Serial No. \_\_\_\_\_  
 Elevation (Spirit Level) \_\_\_\_\_  
 Quadrangle Spencer  
 County Wirt District Burning Springs  
 Engineer O. Meredith Wood Co. Deputy Surveyor  
 Engineer's Registration No. \_\_\_\_\_  
 File No. \_\_\_\_\_ Drawing No. \_\_\_\_\_  
 Date July 9 1948 Scale 300 ft. = 1 in.

STATE OF WEST VIRGINIA  
 DEPARTMENT OF MINES  
 OIL AND GAS DIVISION  
 CHARLESTON

WELL LOCATION MAP

FILE NO. WIRT-59-A-#1  
WIRT-58-A-#4 WIRT-55-A-#7  
WIRT-54-A-#5 WIRT-57-A-#2  
 + Denotes location of well on United States  
 Topographic Maps, scale 1 to 62,500, lat-  
 itude and longitude lines being represented  
 by border lines as shown.

- Denotes one inch spaces on border line  
 of original tracing.



67

STATE OF WEST VIRGINIA  
DEPARTMENT OF MINES  
OIL AND GAS DIVISION

WELL RECORD

Permit No. 59A

Oil or Gas Well oil  
(KIND)

Company C.E. Beardmore  
 Address 209 5th St Marietta, Ohio  
 Farm H. Righter Acres 53  
 Location (waters) near L. Kanawha river  
 Well No. 1 Elev. 697.5  
 District Burrington Springs County Wirt  
 The surface of tract is owned in fee by H. Righter  
 Address Lawrence, W. Va.  
 Mineral rights are owned by same  
 Address \_\_\_\_\_  
 Drilling commenced No Record  
 Drilling completed \_\_\_\_\_  
 Date Shot \_\_\_\_\_ From \_\_\_\_\_ To \_\_\_\_\_  
 With \_\_\_\_\_  
 Open Flow \_\_\_\_\_ /10ths Water in \_\_\_\_\_ Inch  
 \_\_\_\_\_ /10ths Merc. in \_\_\_\_\_ Inch  
 Volume \_\_\_\_\_ Cu. Ft.  
 Rock Pressure \_\_\_\_\_ lbs. \_\_\_\_\_ hrs.  
 Oil No \_\_\_\_\_ bbls., 1st 24 hrs.  
 Fresh water \_\_\_\_\_ feet \_\_\_\_\_ feet  
 Salt water \_\_\_\_\_ feet \_\_\_\_\_ feet

| Casing and Tubing | Used in Drilling | Left in Well | Packers        |
|-------------------|------------------|--------------|----------------|
| Size              |                  |              |                |
| 16                |                  |              | Kind of Packer |
| 13                |                  |              |                |
| 10                |                  |              | Size of        |
| 8 1/2             |                  |              |                |
| 6 5/8             |                  |              | Depth set      |
| 5 3/16 - 4 7/8    | 275'             | 275'         |                |
| 3                 | 1000             | 1000         | Perf. top      |
| 2                 | 1000             | 1000         | Perf. bottom   |
| Liners Used       |                  |              | Perf. top      |
|                   |                  |              | Perf. bottom   |

CASING CEMENTED No SIZE \_\_\_\_\_ No. Ft. \_\_\_\_\_ Date \_\_\_\_\_

COAL WAS ENCOUNTERED AT No FEET \_\_\_\_\_ INCHES  
 \_\_\_\_\_ FEET \_\_\_\_\_ INCHES FEET \_\_\_\_\_ INCHES  
 \_\_\_\_\_ FEET \_\_\_\_\_ INCHES FEET \_\_\_\_\_ INCHES

| Formation       | Color | Hard or Soft | Top         | Bottom       | Oil, Gas or Water | Depth Found     | Remarks |
|-----------------|-------|--------------|-------------|--------------|-------------------|-----------------|---------|
| <u>low run</u>  |       |              | <u>360'</u> | <u>405'</u>  |                   |                 |         |
| <u>" "</u>      |       |              | <u>510'</u> | <u>588'</u>  |                   |                 |         |
| <u>red sand</u> |       |              | <u>650'</u> | <u>790'</u>  |                   |                 |         |
| <u>alt sand</u> |       |              | <u>960'</u> | <u>1153'</u> | <u>oil</u>        | <u>alt sand</u> |         |

