

39° 2' 30"

LATITUDE

81° 22' 50"

LONGITUDE

7'5 OGIS topo location

7.5' loc 1.25 S
202 W

15' loc _____
(calc.) _____

Company _____

Farm _____

Quad Elizabeth

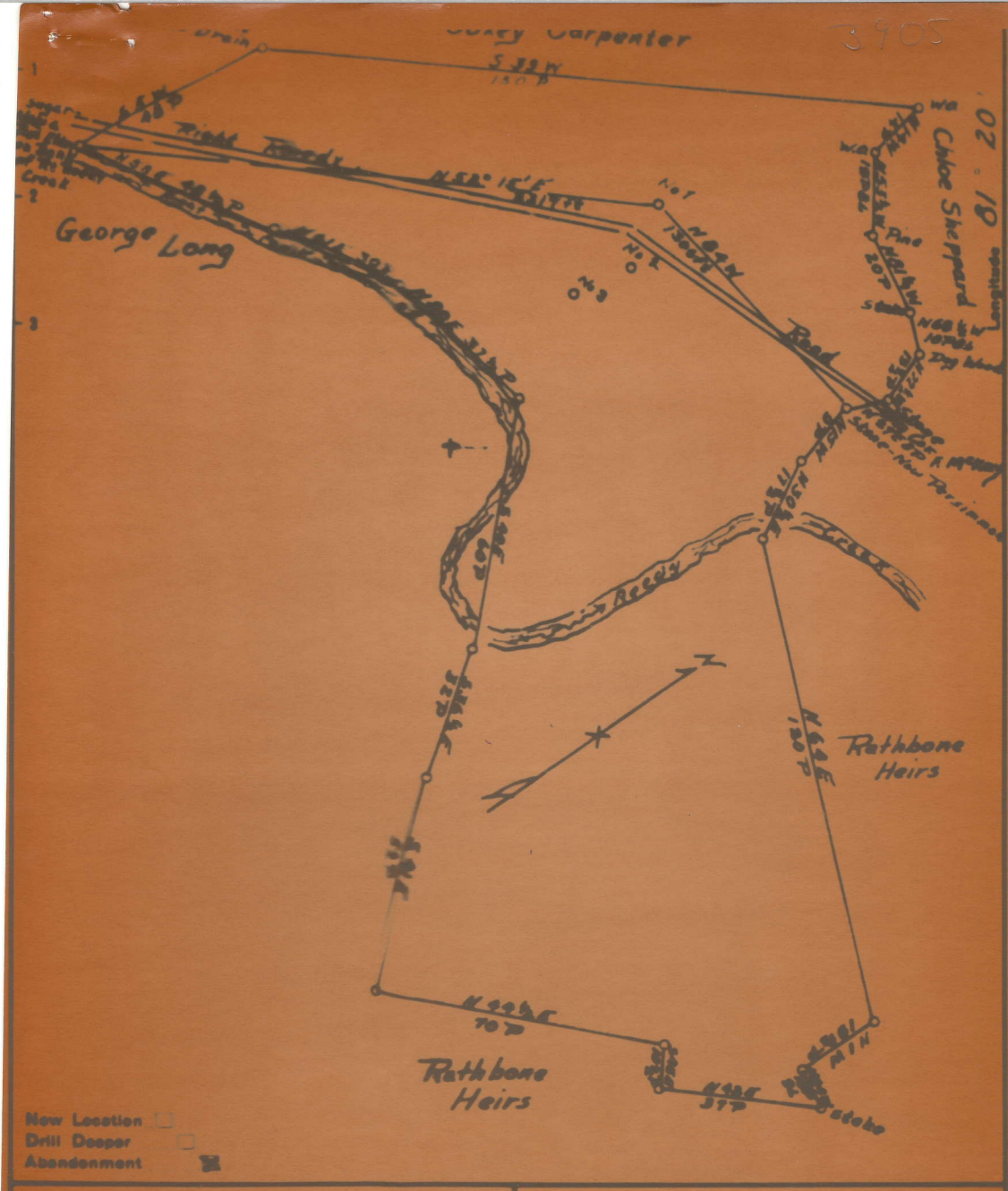
County Wick

District Elizabeth

WELL LOCATION MAP

File No. 74-A

3905



Company Valley Trust, Francis J.
 Address 25 Main, Miami
 Farm J.A. Rathbone Heirs
 Tract Acres 114 Lease No.
 Well (Farm) No. ONE Serial No.
 Elevation (Spirit Level) 621.25
 Quadrangle Elizabeth
 County Wirt District Elizabeth

STATE OF WEST VIRGINIA
 DEPARTMENT OF MINES
 OIL AND GAS DIVISION
 CHARLESTON

WELL LOCATION MAP
 FILE NO. Wirt-74A

+ Denotes location of well on United States Topographic Maps, scale 1 to 82,500. lat

RATHBONE, JOHN, NO. 1.

Wirt-74-A.

By Valley Steel Products Co.

Burning Springs Dist.

(NO PLAT)

8/31/51