

Latitude (15) 39 05

(1/2) 39° 02' 30"

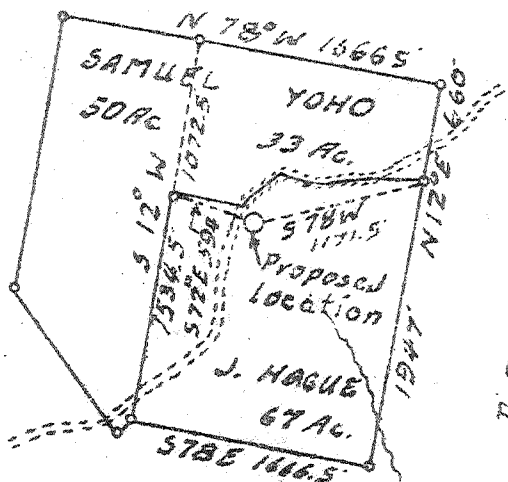
15' scale  
3.035  
.130

3.17-5  
3.165 .15  
2.58  
303  
0.19 W  
8 EC (6-5)

150  
180

35'

Longitude E1



LEVI ARCHER

WOOD CO.

WOOD CO.

WOOD WIRT CO.

JACKSON CO.

WIRT CO.

New Location X  
Drill Deeper   
Abandonment

Company Godfrey L. Cabot, Inc.  
 Address 900 Union Bldg. Charleston, W. Va.  
 Farm John Hague  
 Tract \_\_\_\_\_ Acres 67 Lease No. 2-91  
 Well (Farm) No. 1 Serial No. 1281  
 Elevation (Spirit Level) 998.6  
 Quadrangle Belleville (5C)  
 County Wood District Steele  
 Engineer Logan McDonald  
 Engineer's Registration No. 610  
 File No. \_\_\_\_\_ Drawing No. \_\_\_\_\_  
 Date 3-18-48 Scale 1" = 1320'

STATE OF WEST VIRGINIA  
DEPARTMENT OF MINES  
OIL AND GAS DIVISION  
CHARLESTON

WELL LOCATION MAP  
FILE NO. WOO-247

+ Denotes location of well on United States Topographic Maps, scale 1 to 62,500, latitude and longitude lines being represented by border lines as shown.  
- Denotes one inch spaces on border line of original tracing.

Deep Well

WEST VIRGINIA DEPARTMENT OF MINES  
OIL & GAS DIVISION  
W E L L R E C O R D

Hermit No. Woo 247  
Bolleville Quad.

Dry Hole  
CASING & TUBING

Company	Godfrey L. Cabot, Inc.			
Address	Charleston, W.Va.	13½	241	241
Farm	John Hague Acres	10	1028	1028
Well No.	1 serial 1281 Elev. 998.6	8 5/8	1473	1473
District	Steele Wood County	7	2073	2073
Commenced	4-19-48	5	5008	5008
Completed	10-9-48			
Not shot	10-12-48 shot with 40 qts. 5087 to 5107			
Open flow	6/10ths M in 2"		PRODUCING SAND RECORD 5089 to 5133	33 MCF
Volume	103 MCF when shut in			
Rock Pressure	1300 lbs. in 36 hrs. casing leaking			
Water	830' 3 blrs. per hr.; 1340' 1 1/2 blrs. per hr. 1650' 3½ blrs. per hr.; 1890' H.F.			

Soil	0	16	Sand	1365	1380
Sandstone	16	40	Slate	1380	1410
Blue Slate	40	55	Lime	1410	1427
Sand	55	62	Slate	1427	1437
Red Rock	62	74	Lime	1437	1470
Blue Shell	70	77	Sand	1470	1480
Red Rock	77	93	Slate	1480	1500
Lime	93	126	Sand	1500	1540
Slate	126	150	Slate	1540	1650
Red Rock	150	170	Sand	1650	1710
Blue Slate	170	190	Slate	1710	1760
Red Rock	190	204	Sand	1760	1800
Blue Slate	204	223	Slate	1800	1856
Lime Shell	223	240	Sand	1856	1876
Red Rock	240	275	White Sand	1876	2065
Blue Slate	275	300	Lime	2065	2111
Red Rock	300	350	Slate & Shells	2111	2700
Lime Shells	350	370	Lime	2700	2710
Red Rock	370	405	Slate & Shells	2710	2839
White Lime	405	424	Lime	2839	2865
Red Rock	424	455	Slate & Shells	2865	2916
Lime Shell	455	484	Gr. Lime	2916	2926
Sand	484	490	Slate & Shells	2926	3713
Red Rock	490	506	Br. Shale	3713	3813
Blue Slate	506	530	Slate & Shells	3813	4000
Red Rock	530	547	Br. Shale	4000	4311
Lime Shell	547	572	Gr. Slate	4311	4713
Slate & Shells	572	690	Br. Shale	4713	4965
Red Rock	690	710	Blk. Lime	4965	4970
Blue Slate	710	730	Corniferous	4970	5087 SLM
Lime Shell	730	760	Oriskany	5087	5133
Red Rock	760	770	Dark Lime - Hemlock	5133	5133
Blue Slate	770	790			
Sand	790	800	Gas 5089 26 MCF		485
Slate & Shells	800	824	Gas 5094 33 MCF		
Sand	824	880	Gas 5133 21 MCF		
Black Slate	880	895			
Red Rock	895	905			
Blue Slate	905	950			
Red Rock	950	966			
Slate & Shells	966	1027	4970 5087 5133		
Lime Shell	1027	1030			
Red Rock	1030	1035			
Gray Lime	1035	1039			
Red Rock	1039	1080			
White Slate	1080	1110			
Gray Lime	1110	1150			
Red Rock	1150	1180			
Lime	1180	1190			
Red Rock	1190	1200			
Lime	1200	1300			
Sand	1300	1350			
Blue Slate	1350	1365			