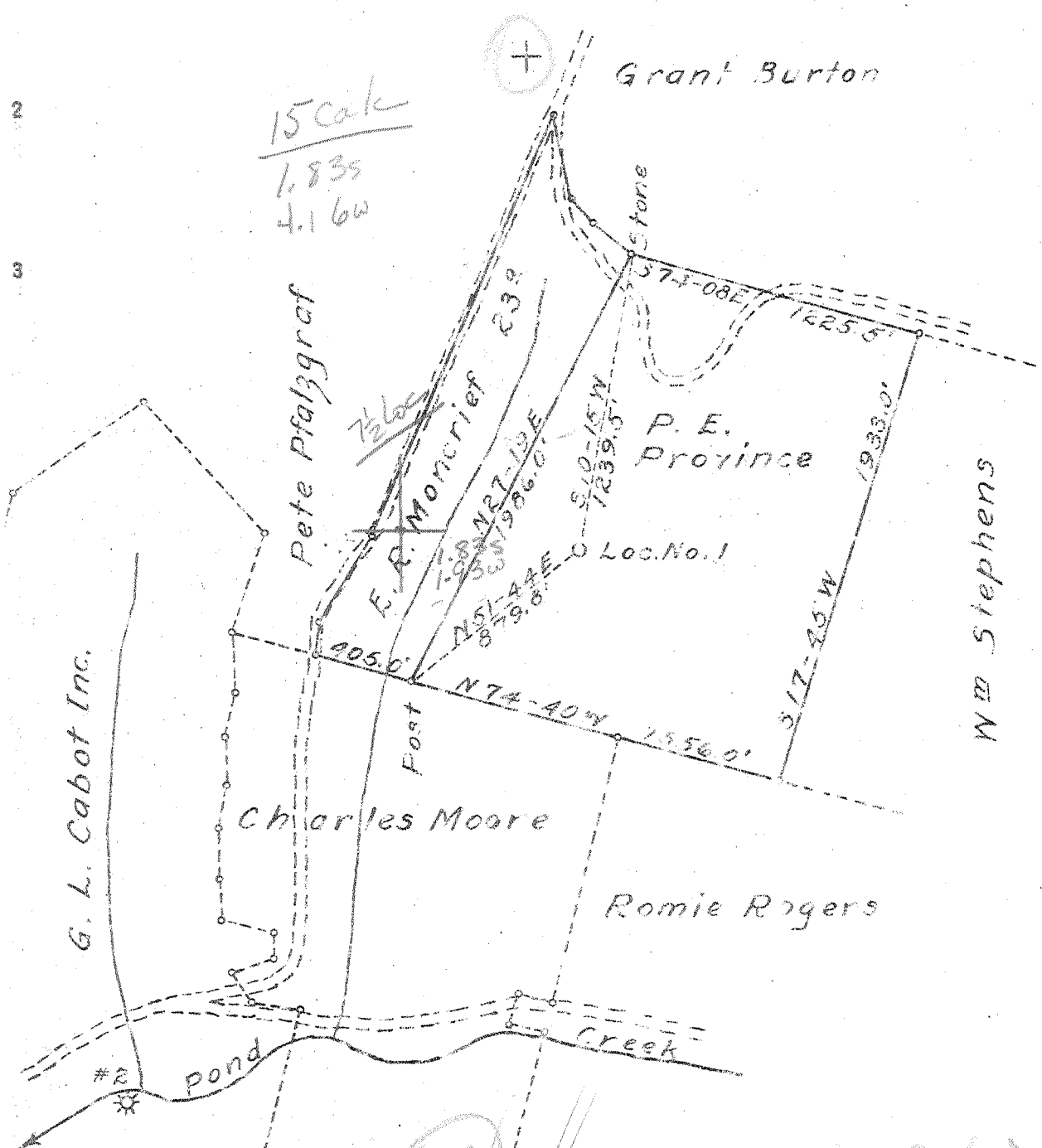


MA

Latitude: 39 05

1
2
3

Longitude 81 30 (15)
81 32 30 (7 1/2)



15 calk
1.835
4.160

G. L. Cabot Inc.

Pete Pfalzgraf

Grant Burton

P. E. Province

Charles Moore

Romie Rogers

W.M. Stephens

Post

Loc. No. 1

#2 pond

APR 12 1949

New Location X
Well Deeper
No. 1

~~1.3 W~~
~~4.22-W~~
~~1.88~~
~~1.94-S~~

Company United Carbon Co.
 Address Charleston, W. Va.
 Farm P. E. Province et al
 Tract _____ Acres 8.5 Lease No. _____
 Well (Farm) No. 1 Serial No. 1633
 Elevation (Spirit Level) 1011.7' Ground
 Quadrangle's Belleville
 County Wood District Steele
 Engineer E. Withrow
 Engineer's Registration No. 1377 Ky.
 File No. 27-D Drawing No. _____
 Date March 25, 1949 Scale 1" = 640'

STATE OF WEST VIRGINIA
DEPARTMENT OF MINES
OIL AND GAS DIVISION
CARTON 00

WELL LOCATION MAP
FILE NO. W00-281

+ Denotes location of well on United States Topographic Maps, scale 1 to 62,500, latitude and longitude lines being represented by border lines as shown.
- - - Denotes one inch spaces on border line
a' original tracing.

65

PROVINCE ET AL. No. 1/1633 - UNITED CARBON CO. - W00-281

1.88 S. 39°05'
 427 W. 81°30'
 00 E. side of N. branch
 of Pond Creek
 NW (G-5)

WEST VIRGINIA DEPARTMENT OF MINES
 OIL & GAS DIVISION
 WELL RECORD

Permit No. Woo 281
 Belleville Quad. -SE

Gas Well
 CASING & TUBING

Company	United Carbon Company			
Address	Box 1913, Charleston 27, W.Va.	16	16	16
Farm	P.E. Province et al A 85	13 3/8	885	885
Location	Pond Creek	10 1/2	1285	1235
Well No.	1(1633) Elev. 1011.7' Gr.	8 5/8	2162	2162
District	Steele Wood County	7 CD	4985	4985
Surface		2	5131	5131
Mineral	Glen Brown et al, Rockport, W.Va.			
Commenced	April 28, 1949			
Completed	Aug. 17, 1949			
Date shot	8-19-49 Depth 5097 to 5126 1/2 with 90 qts. nitroglycerine			
Open flow	86/10ths W in 2"			
Volume	389,000 C.F.			
Rock Pressure	1420 lbs. 36 hrs.			
Salt Water	1525' 1 blr.; 1690' 1 blr.; 1875' 3 BPH 1935' H.F.			

Surface	0	5	Limo Gritty	2055	2242
Rod Rock	5	30	Slate & Shells	2242	2465
Slate	30	75	Shale Brown - <i>Coffee Shale</i>	2465	2475
Red Rock	75	100	Slate & Shells	2475	3985
Limo	100	150	Shale Brown	3085	4065
Red Rock	150	172	Slate	4065	4125
Slate	172	205	Shale Brown	4125	4250
Sand	205	265	Slate White	4250	4690
Slate	265	325	Shale Brown	4690	4974
Red Rock	325	355	Corniferous Limo	4974	5097
Slate	355	400	Oriskany Sand	5097	5126
Shell Sandy	400	412	Limo - <i>Heldersberg</i>	5126	
Slate	412	430	Total depth		5226
Rod Rock	430	440	Plugged back to	5131	
Limo	440	445			
Red Rock	445	500	Gas 3840' show		
Slate White	500	555	Gas 5099 2/10 W 2" 60 MCF		
Sand	555	565			
Red Rock	565	580			
Slate Blue	580	620			
Limo	620	640			
Red Rock	640	655			
Slate Blue	655	680			
Red Rock	680	710			
Slate	710	745			
Red Rock	745	765			
Slate Blue	765	780			
Sand	780	873			
Slate Blue	873	900			
Red Rock	900	915			
Sand	915	975			
Slate Wh	975	985			
Red Rock	985	1015			
Slate & Shells	1015	1030			
Red Rock	1030	1080			
Slate Blue	1080	1150			
Red Rock	1150	1205			
Sand	1205	1225			
Slate & Shells	1225	1310			
Sand	1310	1345			
Slate & Shells	1345	1360			
Limo Broken	1360	1435			
Slate & Shells	1435	1475			
Sand	1475	1540			
Slate & Shells	1540	1625			
Limo	1625	1650			
Sand	1650	1723			
Slate & Shells	1723	1793			
Sand	1793	1807			
Slate & Shells	1807	1840			
Sand	1840	2005			
Big Limo	2005	2055			

5226
 485

Deep Well