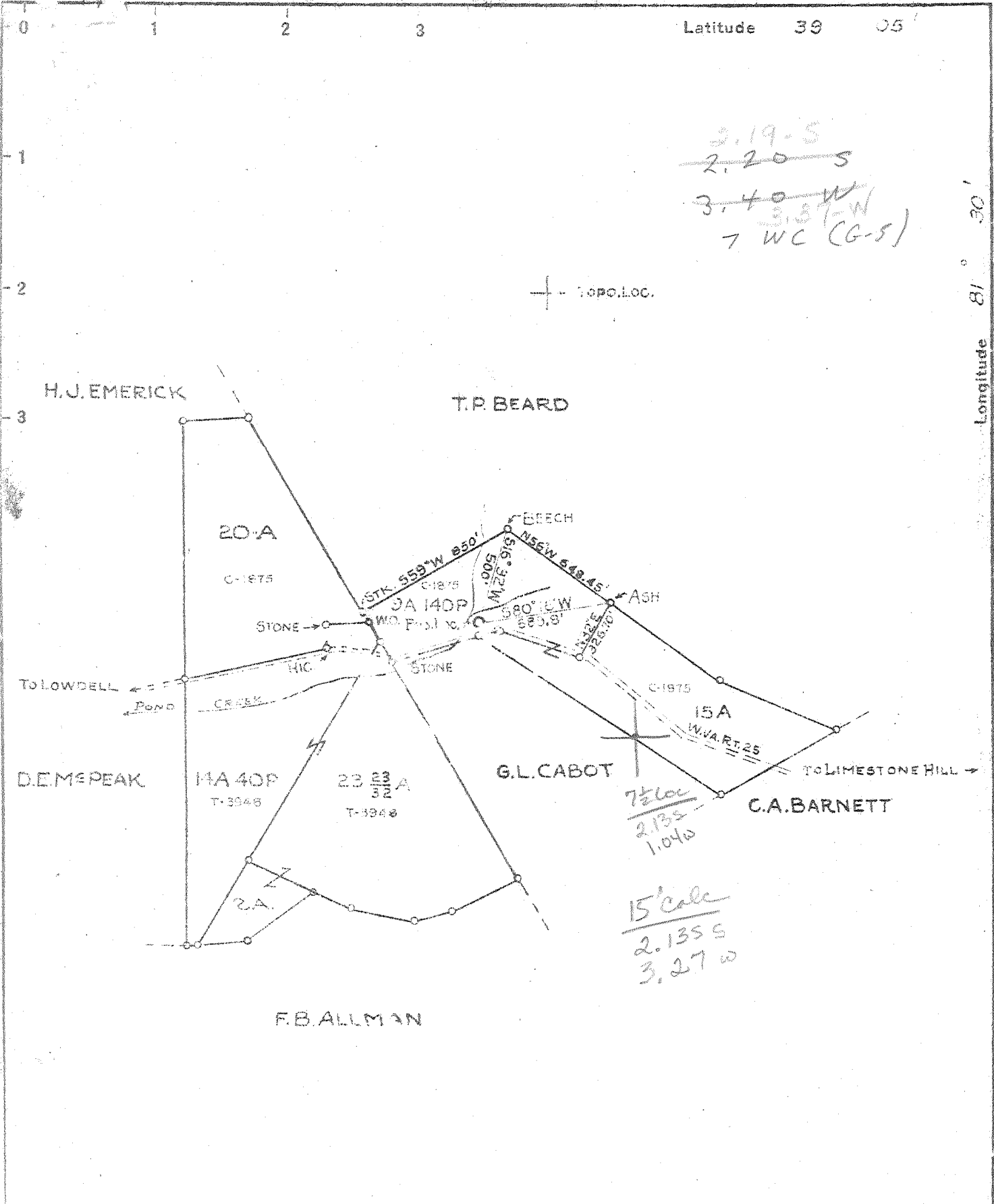


P



New Location   
 Drill Duener   
 Abandonment

Company COLUMBIAN CARBON COMPANY  
 Address BOX 873 CHARLESTON W. VA.  
 Farm AUGUSTA CARSON RADCLIFFE ETAL  
 Tract                      Acres 83 Lease No. 12-1875  
 Well (Farm) No. 1 Serial No. GW-1139  
 Elevation (Spirit Level) 845.53' - 5  
 Quadrangle BELLEVILLE 7 5 222 W-337 SE  
 County WOOD District STEELE  
 Engineer R. B. [Signature]  
 Engineer's Registration No. 2074  
 File No.                      Drawing No. W/23/49  
 Date NOVEMBER 14 1949 Scale 1" = 660'

STATE OF WEST VIRGINIA  
 DEPARTMENT OF MINES  
 OIL AND GAS DIVISION  
 CHARLESTON

WELL LOCATION MAP  
 FILE NO. W 20-297

+ Denotes location of well on United States Topographic Maps, scale 1 to 62,500, latitude and longitude lines being represented by border lines as shown.  
 - Denotes one inch spaces on border line of original tracing.

Samples 13-D (0-5219')

Deep Well

WEST VIRGINIA DEPARTMENT OF MINES  
OIL & GAS DIVISION  
W E L L R E C O R D

Permit No. Woo-297				Dry Well
Mullens, N. W. Guad.				CASING & TUBING
Company	Columbian Carbon Co.			
Address	Box 873, Charleston 23, W. Va. 16" 65# 50' Pulled			
Farm	Augusta C. Radcliffe A 83	13-3/8	840'3"	"
Location	Pond Creek	10-3/4	1340'9"	"
Well No.	1-GW-1139 Elev. 845.53'G	8-1/4 24#	2158'5"	"
District	Steele Wood County	6-5/8	5065'8"	32'1"
Surface	Augusta C. Radcliffe			
Mineral	712 Gladstone St., So. Parkersburg, W. Va.			
Commenced	Augusta C. Radcliffe, et al	Packer		
Completed	November 18, 1949	Midget Bottom Hole		
Date Shot	February 13, 1950	Depth Set 5038'SLM		
Volume	February 13, 1950 Depth 5149' to 5129'-133#4"80% Gelatin			
Water, Fresh	February 25, 1950 Depth 5149' to 5126'-3850#4"80% Gelatin			
Salt Water	Small Show			
	565' 1/2 bbl. per hr.			
	1868' Hole Full			
Soil	0	12	Gas	5133' Show
Gravel and mud	12	26	Gas	5146' Show
Red Rock	26	60		
Sand	60	72	<u>Casing Record</u>	
Red Rock	72	380		
Slate	380	446	12-3-49	13-3/8" casing. Ran 24 bags of
Red Rock	446	492		Aquagel. No circulation or
Slate & Shells	492	525		returns. Columbian Carbon Com-
Red Rock	525	530		pany Crew.
Sand	530	571		
Red Rock	571	615	12-8-49	10-3/4" casing. Not Aquagelled
Slate & Shells	615	660		
Blue Lime	660	680	12-31-49	8-5/8" casing. Ran 27 sacks of
Slate and Shells	680	758		Aquagel. Returns O.K.
Sand	758	792		Columbian Carbon Company Crew
Slate	792	838		
Lime 839'DLM-836'SLM	838	853	1-29-50	6-5/8" casing. Ran 61 sacks of
Sand	853	896		Aquagel. Circulation and returns
Lime	896	907		Columbian Carbon Company Crew.
Red Rock	907	1005		
Slate & Shells	1005	1080		
Red Rock	1080	1175		
Slate & Shells	1175	1238		
Sand	1238	1312		
Slate & Shells	1312	1421		
Sand 1329'SLM-1330'DLM	1421	1480		
Slate & Shells	1480	1575		
Sand	1575	1626		
Slate & Shells	1626	1795		
Sand	1795	2092		
Lime 2160'DLM-2156'SLM	2092	2194		
Slate and Shells	2194	2410		
Brown Shale	2410	2425		
Slate and Shells	2425	2520		
Lime	2520	2553		
Slate & Shells	2553	3565		
Lime	3565	3610		
Slate and Shells	3610	3640		
Shale and Shells	3640	3848		
Lime	3848	3940		
Slate and Shells	3940	3988		
Brown Shale	3988	4280		
Slate and Shells	4280	4803		
Dark Shale	4803	5012'DLM		
		5005'SLM		
✓ Corniferous Lime	5012'DLM			
5045'DLM-5038'SLM	5005'SLM	5130'SLM		
✓ Oriskany Sand	5130'SLM	5194'SLM		
✓ Lime - <i>Heldersberg</i>	5194'SLM	5219'		
		485		
TOTAL DEPTH		5219'		

PLUGGED AND ABD. 3-16-50