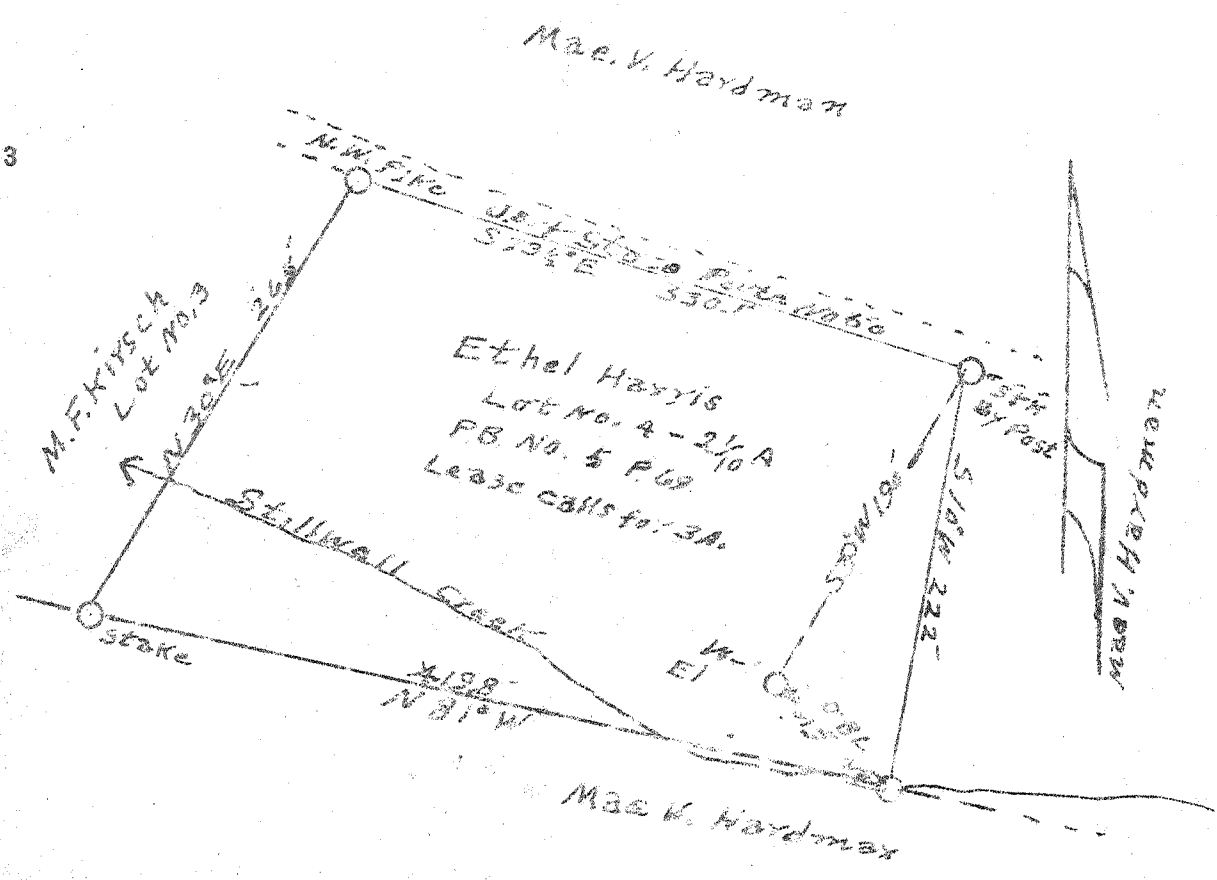


Latitude 39° 15'

Longitude 81° 20'



New Location    
 Drill Deeper    
 Abandonment

Company BURGE & MOHE   
 Address PARKERSBURG W. VA.   
 Farm ETHEL HARRIS   
 Tract 4 Acres 2 1/4 Lease No.   
 Well (Farm) No. 1 Serial No.   
 Elevation (Spirit Level) 70.5   
 Quadrangle ELIZABETH NC   
 County WOOD District WALKER   
 Engineer Robert R. Anderson   
 Engineer's Registration No. 236   
 File No. \_\_\_\_\_ Drawing No. \_\_\_\_\_   
 Date 2-20-50 Scale 1 in = 100 ft.

STATE OF WEST VIRGINIA   
 DEPARTMENT OF MINES   
 OIL AND GAS DIVISION   
 CHARLESTON

WELL LOCATION MAP   
 FILE NO. W00-308

+ Denotes location of well on United States Topographic Maps, scale 1 to 62,500 latitude and longitude lines being represented by border lines as shown.   
 - Denotes one inch spaces on border line of original tracing.