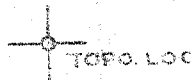
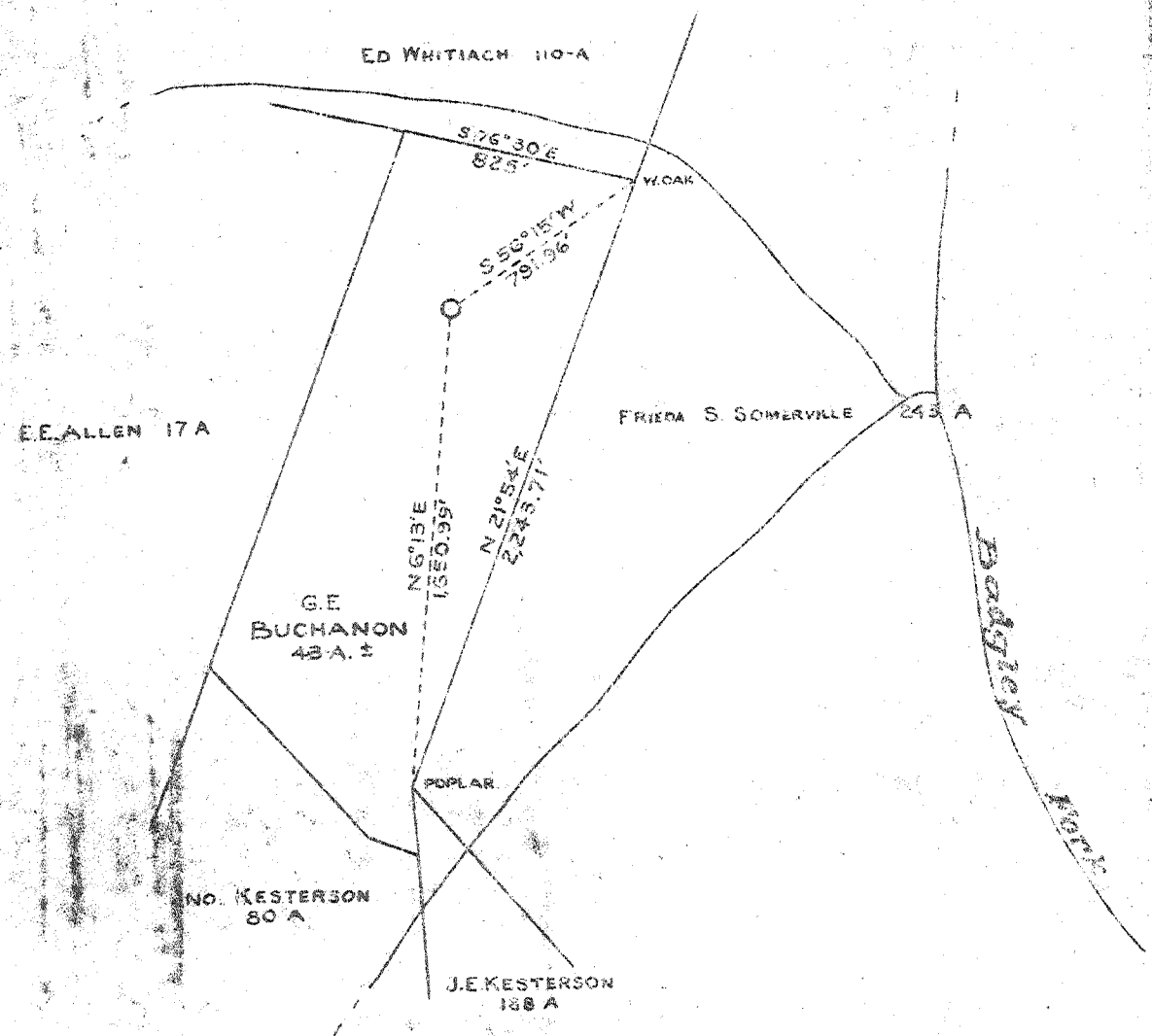




2.15-S
~~2.15-S~~
~~1.38-W~~
1.37-W
2 EC (6-S)



Longitude 81° 35'



New Location
Drill Deeper
Abandonment

Samples 22-A (6-4690')

| | |
|-----------------------------|--|
| Company | COLUMBIAN CARBON CO. |
| Address | Box-873 CHARLESTON, W.VA. |
| Farm | FRIEDA S. SOMERVILLE ET AL |
| Tract | G.E. BUCHANON Acres 588 Lease No. WU-138 |
| Well (Farm) No. | 1 Serial No. GW-1181 |
| Elevation (Spirit Level) | 856.01 |
| Quadrangle | BELLEVILLE 2 S-218-W-138 (N.C.) |
| County | WOOD Dist. LUBECK |
| Engineer | R. Anderson |
| Engineer's Registration No. | 2074 |
| File No. | W-352 |
| Date | JUNE 17, 1952 1" = 660' |

STATE OF WEST VIRGINIA
DEPARTMENT OF MINES
OIL AND GAS DIVISION
CHARLESTON

WELL LOCATION MAP
FILE NO. WOO-372

+ Denotes location of well on United States Topographic Maps, scale 1 to 62,500, latitude and longitude lines being represented by border lines as shown.
- Denotes one inch spaces on border line of original tracing.

Deep Well



STATE OF WEST VIRGINIA
DEPARTMENT OF MINES
OIL AND GAS DIVISION 18

Kellewill

WELL RECORD

Permit No. W00-372

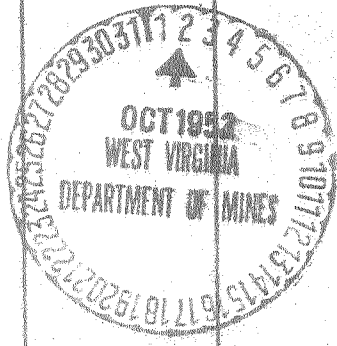
Oil or Gas Well dry hole
(MINE)

Company Columbian Carbon Company
Address Box 873, Charleston 23, W. Va.
Farm Frieda S. Somerville, et al Acres 588
Location (waters) Badgley Fork
Well No. 1 - (SM-1181) Elev. 856.01' G
District Luback County Wood
The surface of tract is owned in fee by Frieda Somerville, et al
2010 Bolton St. Address Baltimore, Md.
Mineral rights are owned by Frieda S. Somerville, et al
(for further addresses contact G.C.C.)
Drilling commenced 7-13-52
Drilling completed 10-1-52
Date Shot not shot From _____ To _____
With _____
Open Flow /10ths Water in _____ Inch
/10ths Merc. in _____ Inch
Volume dry hole Cu. Ft.
Rock Pressure _____ lbs. hrs.
Oil _____ bbls., 1st 24 hrs.
Fresh water _____ feet
Salt water 1758' feet

| Casing and Tubing | Used in Drilling | Left in Well | Packers |
|-------------------|------------------|--------------|----------------|
| Size | | | |
| 18" | 25' | 25' | Kind of Packer |
| 18" | | | |
| 3 1/4" 40# | 1109' 2" | pulled | Size of |
| 8 1/4" 21# | 1928' | pulled | |
| 7" 23# | 4587' 7" | 4587' 7" | Depth set |
| 5 1/2" 16 | | | |
| 2 | | | Perf. top |
| 2 | | | Perf. bottom |
| Liners Used | | | Perf. top |
| | | | Perf. bottom |

CASING CEMENTED _____ SIZE _____ No. Ft. _____ Date _____
see reverse side
COAL WAS ENCOUNTERED AT 1295 FEET 36 INCHES
FEET INCHES FEET INCHES
FEET INCHES FEET INCHES

| Formation | Color | Hard or Soft | Top | Bottom | Oil, Gas or Water | Depth Found | Remarks |
|----------------|-------|--------------|------|--------|-------------------|-------------|---------|
| Red Rock | | | 0 | 40 | | | |
| Slate | | | 40 | 93 | | | |
| Red Rock | | | 93 | 102 | | | |
| Slate | | | 102 | 137 | | | |
| Red Rock | | | 137 | 168 | | | |
| Slate | | | 168 | 180 | | | |
| Red Rock | | | 180 | 188 | | | |
| Lime | | | 188 | 208 | | | |
| Red Rock | | | 208 | 266 | | | |
| Slate | | | 266 | 272 | | | |
| Red Rock | | | 272 | 346 | | | |
| Lime | | | 346 | 372 | | | |
| Sand | | | 372 | 388 | | | |
| Slate | | | 388 | 408 | | | |
| Lime | | | 408 | 440 | | | |
| Sand | | | 440 | 472 | | | |
| Slate | | | 472 | 505 | | | |
| Lime | | | 505 | 525 | | | |
| Slate | | | 525 | 551 | | | |
| Red Rock | | | 551 | 561 | | | |
| Lime and Shale | | | 561 | 589 | | | |
| Sand | | | 589 | 619 | | | |
| Slate | | | 619 | 631 | | | |
| Slate | | | 631 | 742 | | | |
| Sand | | | 742 | 767 | | | |
| Slate | | | 767 | 787 | | | |
| Red Rock | | | 787 | 889 | | | |
| Slate | | | 889 | 935 | | | |
| Red Rock | | | 935 | 963 | | | |
| Slate | | | 963 | 973 | | | |
| Red Rock | | | 973 | 983 | | | |
| Slate | | | 983 | 1023 | | | |
| Sand | | | 1023 | 1043 | | | |
| Slate | | | 1043 | 1054 | | | |
| Lime | | | 1054 | 1076 | | | |
| Slate | | | 1076 | 1102 | | | |
| Lime | | | 1102 | 1105 | | | |
| Sand | | | 1105 | 1128 | | | |
| Lime | | | 1128 | 1141 | | | |



| Formation | Color | Hard or Soft | Top | Bottom | Oil, Gas or Water | Depth Found | Remarks |
|----------------------|-------------------------------------|--------------|---------------------|--------|-------------------|-------------|-----------|
| Slate | | | 1141 | 1194 | | | |
| Gritty Lime | | | 1194 | 1219 | | | |
| Slate | | | 1219 | 1257 | | | |
| Sand | | | 1257 | 1271 | | | |
| Slate | | | 1271 | 1295 | | | |
| Coal | | | 1295 | 1298 | | | |
| Sand | | | 1298 | 1335 | | | |
| Slate | | | 1335 | 1345 | | | |
| Sand | | | 1345 | 1348 | | | |
| Slate | | | 1348 | 1355 | | | |
| Sand | | | 1355 | 1461 | | | |
| Slate | | | 1461 | 1559 | | | |
| Sand | | | 1559 | 1602 | | | |
| Slate & Shells | | | 1602 | 1650 | | | |
| Slate | | | 1650 | 1734 | | | |
| Sand | | | 1734 | 1880 | S. water | 1758' | hole full |
| Lime | 1887'DLM-1911'SLM | | 1880 | 1968 | | | |
| Sand | | | 1968 | 1978 | | | |
| Slate | | | 1978 | 2030 | | | |
| Lime | | | 2030 | 2063 | 4522 | 4644 | 4706 |
| Slate & Shells | | | 2063 | 2540 | 856 | 856 | 856 |
| Lime | | | 2540 | 2605 | | | |
| Slate | | | 2605 | 3375 | 3666 | 3788 | 3850 |
| Brown shale | | | 3375 | 3426 | | | |
| Slate & Shells | | | 3426 | 3681 | | | |
| Lime | | | 3681 | 3713 | | | |
| Slate | | | 3713 | 3855 | | | |
| Shale | | | 3855 | 3915 | | | |
| Slate | | | 3915 | 4400 | | | |
| Shale | | | 4400 | 4522 | | | |
| Lime | 4537'DLM-4556'SLM | | 4522 | 4644 | | | |
| | | corrected | 4513'SLM | 4706 | | | |
| Ordinary Sand | | | 4644 | 4706 | | | |
| Lime | | | 4706 | 4758 | | | |
| | | | TOTAL DEPTH | 4758' | | | |
| | | | | 485 | | | |
| CASING RECORD | | | | | | | |
| 7-18-51 | 10-9/8" casing not Aquagelled. | | | | | | |
| 7-26-52 | 8-5/8" casing - ran 22 bags Aquagel | | | | | | |
| 9-17-52 | 7" casing not aquagelled | | | | | | |

Date October 1, 1952, 19

APPROVED Columbian Carbon Company Over
R. L. Bird, Jr.
 R. L. Bird, Jr., Asst. Supt.