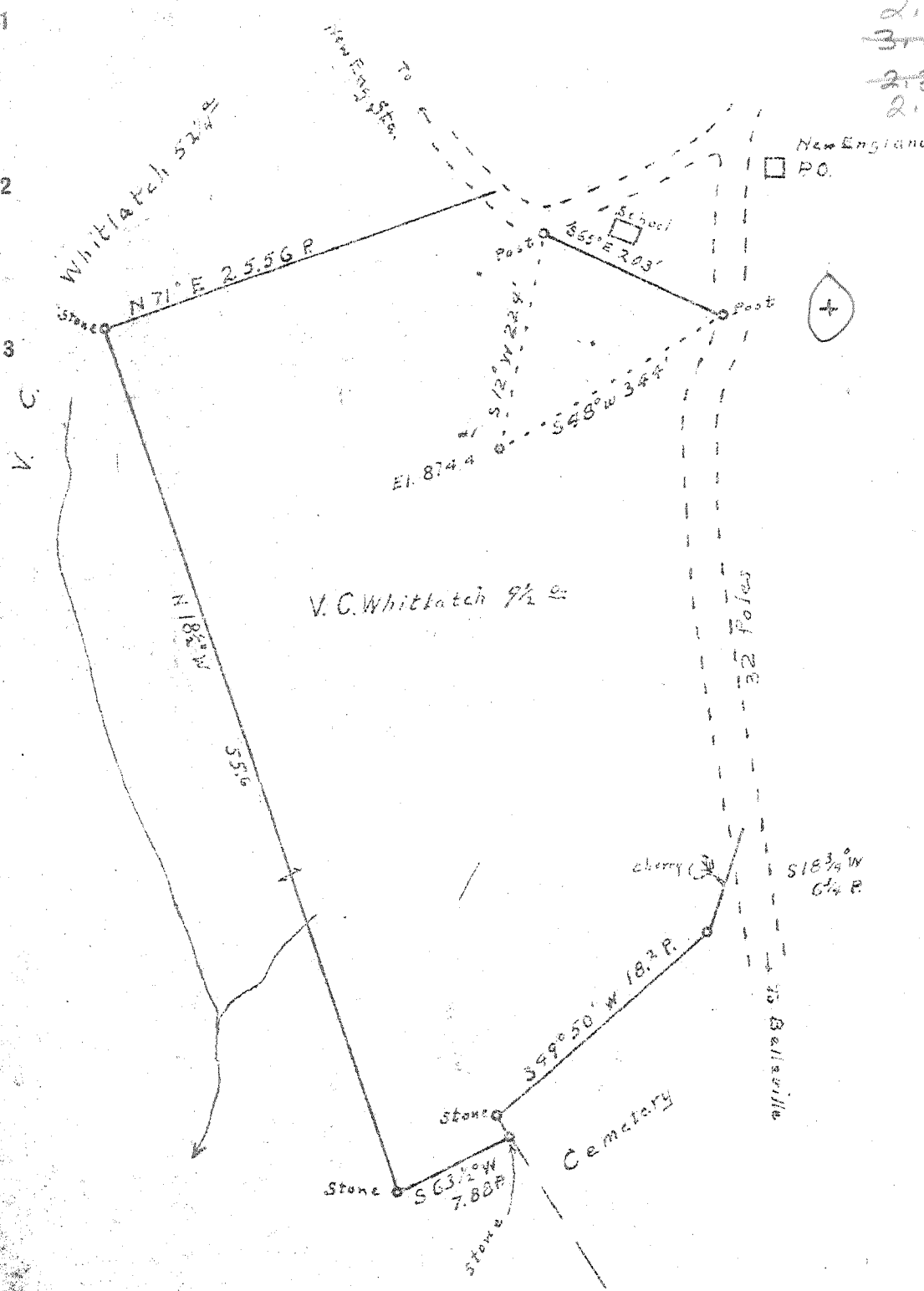


Latitude 39° 12' 30" (72)

15' scale
3.045
2.31W

2.98-S
~~3.02-S~~
~~2.30-W~~
2.26-W
30 (G-S)

Longitude 81° 42' 30" (72)



New Location
 Drill Deeper
 Abandonment

Company B. H. Putnam, Operator
 Address 1st Nat Bank Bldg, Marietta, Ohio
 Farm V. C. Whitlatch
 Tract _____ Acres 9 1/2 Lease No. _____
 Well (Farm) No. 1 Serial No. _____
 Elevation (Spirit Level) 879.4'
 Quadrangle Belleville - NW
 County Wood District Harris
 Engineer Robert R. Anderson
 Engineer's Registration No. 296
 File No. _____ Drawing No. _____
 Date 7/29 52 Scale 1 in = 10 Poles

STATE OF WEST VIRGINIA
 DEPARTMENT OF MINES
 OIL AND GAS DIVISION
 CHARLESTON

WELL LOCATION MAP
 FILE NO. W00-377 4 D

+ Denotes location of well on United States Topographic Maps, scale 1 to 62,500, latitude and longitude lines being represented by border lines as shown.
 - Denotes one inch spaces on border line of original tracing.



STATE OF WEST VIRGINIA
DEPARTMENT OF MINES
OIL AND GAS DIVISION /5

Belleville

WELL RECORD

Permit No. W002377

Oil or Gas Well Gas
(RMS)

Company B. H. Putnam, Operator
Address 512 3rd St., Marietta, Ohio
Farm V. C. Whitlatch Acres 85
Location (waters) Ohio River
Well No. 1 Elev. 874
District Harris County Wood
The surface of tract is owned in fee by V. C. Whitlatch
Address New England
Mineral rights are owned by V. C. Whitlatch
Address New England
Drilling commenced 7-31-52
Drilling completed 8-15-52
Date Shot From _____ To _____
With _____
Open Flow /10ths Water in _____ Inch
/10ths Merc. in _____ Inch
Volume Gas _____ Cu. Ft.
Rock Pressure _____ lbs _____ hrs.
Oil _____ bbls., 1st 24 hrs.
Fresh water _____ feet _____ feet
Salt water 1 1/2 barrels/hr. @ 2 feet 1190' feet

Casing and Tubing	Used in Drilling	Left in Well	Packers
Size			Kind of Packer
16			
18	210'		
10		10 1/2'	Size of
8 1/4			Depth set
8 3/16			
8		1575'	Perf. top
2			Perf. bottom
Liners Used			Perf. top
			Perf. bottom

CASING CEMENTED _____ SIZE _____ No. Ft. _____ Date _____
COAL WAS ENCOUNTERED AT _____ FEET _____ INCHES
_____ FEET _____ INCHES _____ FEET _____ INCHES
_____ FEET _____ INCHES _____ FEET _____ INCHES

Formation	Color	Hard or Soft	Top	Bottom	Oil, Gas or Water	Depth Found	Remarks
Sand			0	10			
Sand			10	25			
Red Rock	Red		25	90			
Blue Slate	Blue		90	100			
Red Rock	Red		100	210			
Slate			210	242			
Red Rock	Red		242	275			
Sand			275	315			
Slate			315	325			
Red Rock	Red		325	350			
Slate			350	375			
Sand			375	385			
Red Rock			385	425			
Lime			425	430			
Red Rock	Red		430	480			
Blue Slate	Blue		480	505			
Red Rock	Red		505	530			
Blue Slate	Blue		530	595			
Sand			595	611			
White Slate	White		611	657			
Pink Rock	Pink		657	665			
Lime Slate			665	682			
Sand			682	705			
Slate			705	725			
Red Rock	Red		725	760			
Blue Slate	Blue		760	776			
Slate			776	790			
Red Rock	Red		790	870			
Blue Slate	Blue		870	890			
Lime			890	896			
Slate			896	920			
Sand		Hard	920	955			
Blue Slate	Blue		955	960			
Pink Rock	Pink		960	986			
Slate			986	1025			
Sand			1025	1030			
White Slate	White		1030	1100			
Lime			1100	1130			



SLM @

1025

Formation	Color	Hard or Soft	15 Top	Bottom	Oil, Gas or Water	Depth Found	Remarks
Sandy Slate			1130	1140			
Slate			1140	1170			
Sand			1170	1200			
Slate			1200	1211	1½ bailers/hr. @ 1190'		
Broken Sand			1211	1245			
Lime, hard, gray			1245	1255			
Sand			1255	1270			
Slate			1270	1295			
Sand			1295	1340			
Sandy Slate			1340	1370			
Sand			1370	1380			
Slate			1380	1395			
Lime			1395	1405			
Sand			1405	1425			
Black slate	Black		1425	1435			
Slate			1435	1445			
Sandy slate			1445	1460			
Gray sand	Gray		1460	1470			
Broken sand			1470	1490			
Shelly slate			1490	1507			
Slate&shells			1507	1579			
Sand			1579	1580½	SLM gas @	1579'	
Drilling stopped							

Date _____, 19__

APPROVED _____, Owner

By _____



STATE OF WEST VIRGINIA
DEPARTMENT OF MINES
OIL AND GAS DIVISION 12

Bellsville

WELL RECORD

Permit No. Woo-377-D

Oil or Gas Well Gas
(KIND)

Company B. H. Putnam, Operator
Address 512 Third Street, Marietta, Ohio
Farm V. C. Whitlatch Acres 85
Location (waters) Ohio River
Well No. 1 Elev. 874
District Harris County Wood
The surface of tract is owned in fee by V. C. Whitlatch
Address New England
Mineral rights are owned by V. C. Whitlatch
Address New England
Drilling commenced 7/31/52
Drilling completed 3/29/53
Date Started Hydrafrac From -- To ---
With _____
Open Flow /10ths Water in _____ Inch
/10ths Merc. in _____ Inch
Volume 475,000 Cu. Ft.
Rock Pressure 1520 lbs. 36 hrs.
Oil None bbls., 1st 24 hrs.
Fresh water None feet
Salt water None feet

Casing and Tubing	Used in Drilling	Left in Well	Packers
Size			Kind of Packer
16			
18	210'		
10	1045'		Size of
8 1/2		1770'	
6 3/4		4347'	Depth set
5 3/16			
3	1575'		Perf. top
2			Perf. bottom
Liners Used			Perf. top
			Perf. bottom

CASING CEMENTED 7" SIZE 350' No. Ft. 3/19/53 Date

COAL WAS ENCOUNTERED AT None FEET INCHES
FEET INCHES FEET INCHES
FEET INCHES FEET INCHES

Formation	Color	Hard or Soft	Top	Bottom	Oil, Gas or Water	Depth Found	Remarks
Slate	White		1590	1603			
Sand			1603	1615			
Sand	White		1615	1630			
Sand			1630	1697			
Sand	1697		1697	1765			
Slate	1765		1765	1800			
Slate-Shells			1800	1810			
Slate			1810	1855			
Slate-Lime			1855	1883			
Slate-Shells			1883	1934			
Slate			1934	1985			
Slate-Lime Shells			1985	2036			
Slate			2036	2080			
Sand			2080	2084	<i>Perforated</i>		
Slate			2084	2143			
Slate-Lime			2143	2181			
Slate-Shells			2181	2440			
Slate-Lime			2440	2526			
Slate			2526	2586			
Slate-Lime			2586	2667			
Slate			2667	2718			
Slate-Shells			2718	2760			
Slate			2760	2820			
Slate-Shells			2820	2856			
Slate-Lime			2856	3083			
Slate-Shells			3083	3151			
Slate			3151	3190			
Slate-Shells			3190	3230			
Shale-Lime			3230	3323			
Lime			3323	3404			
Shale-Lime			3404	3450			
Shale			3450	3733			
Slate-Shells			3733	3776			
Slate			3776	4027			



Formation	Color	Hard or Soft	Top	Bottom	Oil, Gas or Water	Depth Found	Remarks
Slate-Shale			4027	4073			
Shale			4073	4217			
Shale Lime			4217	4245			
✓ Lime			4245	4347	4245 874	4347 874	
✓ Sand			4347	4371	3371	3473	
				475			

Date June 6, 1953

APPROVED B.H. Putnam, Owner

By B.H. Putnam (Title)