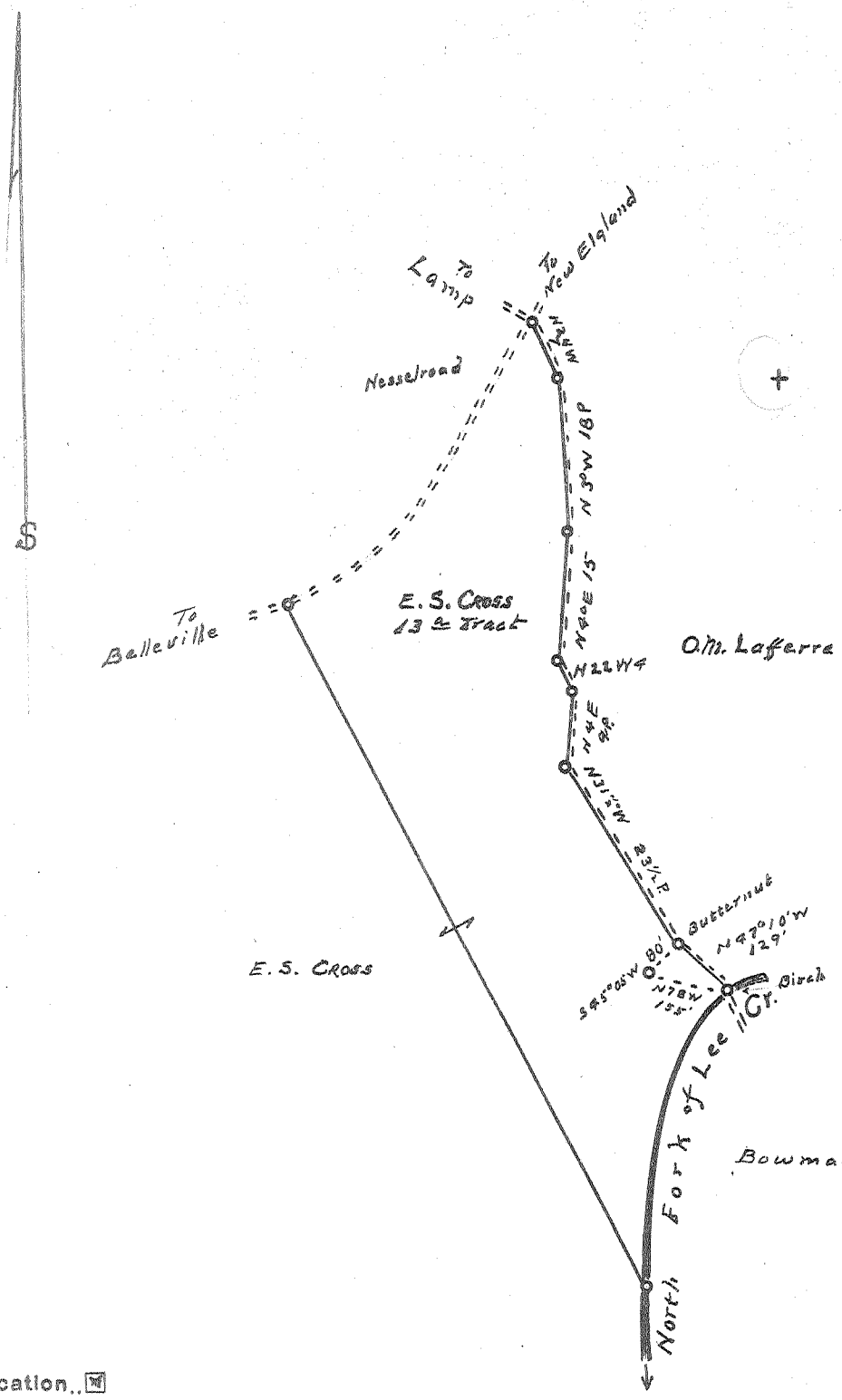


Latitude  $39^{\circ} 15'$   
 $39^{\circ} 12' 30''$  (12)

Longitude  $81^{\circ} 42' 30''$  (12)



7 1/2  
 0.765  
 .16 W

15' scale  
 3645  
 239 W

228-W  
 232-W  
 361-S  
 366-S

3 C (G-S)

New Location   
 Drill Deeper   
 Abandonment

Company B.H. Putnam, (Operator)  
 Address 1st Nat Bank Marietta, Ohio  
 Farm E.S. Cross  
 Tract <sup>Walnut Hill Road</sup> Acres 13 Lease No. \_\_\_\_\_  
 Well (Farm) No. 1 Serial No. \_\_\_\_\_  
 Elevation (Spirit Level) 622'  
 Quadrangle Belleville **NW**  
 County Wood District Harris  
 Engineer Robert R. Anderson  
 Engineer's Registration No. 296  
 File No. \_\_\_\_\_ Drawing No. \_\_\_\_\_  
 Date June 30, 53 Scale 1/2" = 20 Poles

STATE OF WEST VIRGINIA  
 DEPARTMENT OF MINES  
 OIL AND GAS DIVISION  
 CHARLESTON

WELL LOCATION MAP  
 FILE NO. W00-392

+ Denotes location of well on United States Topographic Maps, scale 1 to 62,500, latitude and longitude lines being represented by border lines as shown.  
 - Denotes one inch spaces or border line of original tracing.

6-6-196 Deepwell



STATE OF WEST VIRGINIA  
DEPARTMENT OF MINES  
OIL AND GAS DIVISION 9

Quadrangle Belleville

WELL RECORD

Permit No. W 20-392

Oil or Gas Well

(KIND)

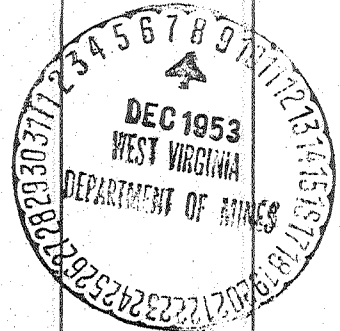
Company B. H. Putnam, Operator  
Address Box 647, Marietta, Ohio  
Farm E. S. Cross Acres 63  
Location (waters) \_\_\_\_\_  
Well No. One (1) Elev. 622'  
District Harris County Wood  
The surface of tract is owned in fee by E. S. Cross  
New England Address W. Va.  
Mineral rights are owned by E. S. Cross  
New England Address West Virginia  
Drilling commenced 6-26-53  
Drilling completed 8-26-53  
Date Shot By report From \_\_\_\_\_ To \_\_\_\_\_  
With \_\_\_\_\_  
Open Flow /10ths Water in \_\_\_\_\_ Inch  
/10ths Merc. in \_\_\_\_\_ Inch  
Volume 60,000 Cu. Ft.  
Rock Pressure 1660 lbs. \_\_\_\_\_ hrs.  
Oil \_\_\_\_\_ bbls., 1st 24 hrs.  
Fresh water no feet \_\_\_\_\_ feet  
Salt water no feet \_\_\_\_\_ feet

Casing and Tubing	Used in Drilling	Left in Well	Packers
Size			
16			Kind of Packer
13	280		
10	800		Size of
8 1/4	1493	1493	
<del>8 1/4</del> 7	4102	4102	Depth set
5 3/16			
3			Perf. top
2	4106	4106	Perf. bottom
Liners Used			Perf. top
			Perf. bottom

CASING CEMENTED 7" SIZE 4102 No. Ft. 8-10-53 Date

COAL WAS ENCOUNTERED AT \_\_\_\_\_ FEET \_\_\_\_\_ INCHES  
\_\_\_\_\_ FEET \_\_\_\_\_ INCHES \_\_\_\_\_ FEET \_\_\_\_\_ INCHES  
\_\_\_\_\_ FEET \_\_\_\_\_ INCHES \_\_\_\_\_ FEET \_\_\_\_\_ INCHES

Formation	Color	Hard or Soft	Top	Bottom	Oil, Gas or Water	Depth Found	Remarks
Slate & Shells			60	124			
Rock	Red		124	170			
Lime			170	249			
Lime & Sand			249	363			
Sand			363	436			
Rock	Red		436	614			
Slate & Shells			614	655			
Lime & Sand			655	705			
Slate			705	745			
Slate & Lime			745	783			
Lime			783	847			
Slate & Shells			847	890			
Slate			890	955			
Lime			955	1009			
<del>Sand</del> Sand			1009	1058			
Slate & Shells			1058	1162			
Slate & Lime			1162	1183			



(Over)

	Color	Hard or Soft	Top 9	Bottom	Oil, Gas or Water	Depth Found	Remarks
Sand			1183	1228			
Sand & Slate			1228	1285			
Slate & Shells			1285	1328			
Sand			1328	1493			
Slate			1493	1513			
Lime			1513	1590			
Lime & Slate			1590	1628			
Lime			1628	1650			
Slate			1650	1705 <del>1705</del>			
Slate & Shells			1705	1760			
Lime & Slate			1760	1813			
Shale			1813	1843			
Slate & Shells			1843	1927			
Slate			1927	1958			
Slate & Shells			1958	2065			
Slate			2065	2125			
Slate & Shells			2125	2230			
Slate			2230	2288			
Slate & Shells			2288	2410			
Slate & Lime			2410	2455			
Slate			2455	2509			
Slate & Shells			2509	2539			
Slate			2539	2594	4023	4102	
Slate & Shells			2594	2648	622	622	
Slate & Lime			2648	2688	3401	3490	
Slate & Shells			2688	2780			
Slate & Lime			2780	2823			
Slate & Shells			2823	2871			
Slate			2871	2910			
Slate & Shells			2910	2995			
Slate			2995	3050			

Lime (Corniferous)  
 ...

70

4023 - 4102 Date \_\_\_\_\_, 19\_\_\_\_  
 4102 - 4137  
 APPROVED [Signature] Owner  
 By Sup J. (Title)  
 4137  
 415

This well to  
 own by