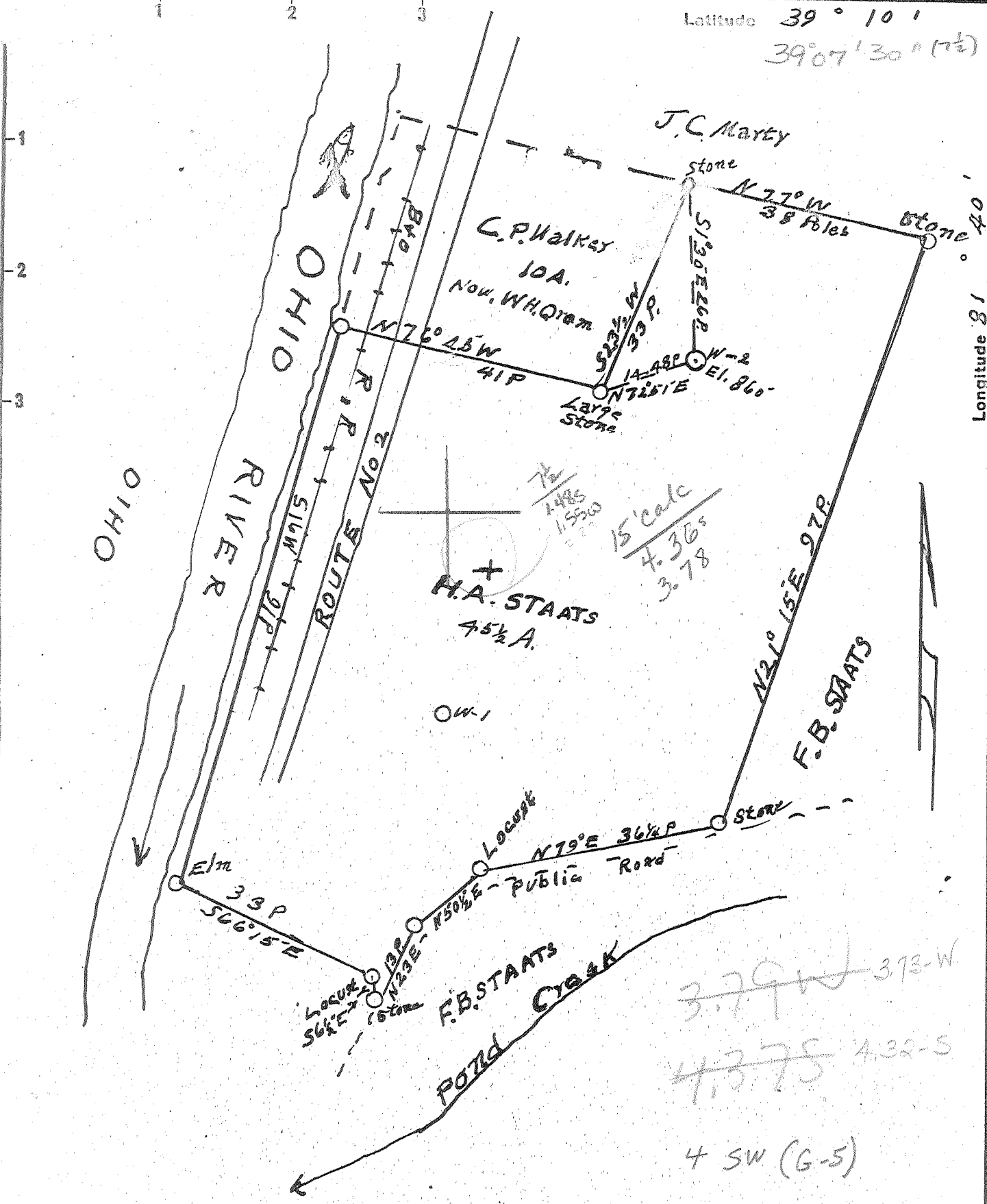


Latitude 39° 10'

39° 07' 30" (1/2)

Longitude 81° 40'

81° 42' 30" (7/2)



- New Location...
- Drill Deeper.....
- Abandonment.....

Company BELLEVILLE OIL & GAS Co.  
 Address BELLEVILLE, W.Va.  
 Farm H.A. STAATS  
 Tract 3 Acres 45 1/2 Lease No. \_\_\_\_\_  
 Well (Farm) No. 2 Serial No. \_\_\_\_\_  
 Elevation (Spirit Level) 860'  
 Quadrangle BELLEVILLE ~~WC~~  
 County WOOD District HARRIS  
 Engineer Robert R. Anderson  
 BY J.E.A. Engineer's Registration No. 296  
 File No. \_\_\_\_\_ Drawing No. \_\_\_\_\_  
 Date 9-19-53 Scale 1 in. = 20 Poles

STATE OF WEST VIRGINIA  
 DEPARTMENT OF MINES  
 OIL AND GAS DIVISION  
 CHARLESTON

**WELL LOCATION MAP**  
 FILE NO. W00-405

+ Denotes location of well on United States Topographic Maps, scale 1 to 62,500, latitude and longitude lines being represented by border lines as shown.

- Denotes one inch spaces on border line of original tracing.

Deep well

296



STATE OF WEST VIRGINIA  
DEPARTMENT OF MINES  
OIL AND GAS DIVISION 9

Quadrangle Bellemeville

Permit No. W00-405

WELL RECORD

Oil or Gas Well

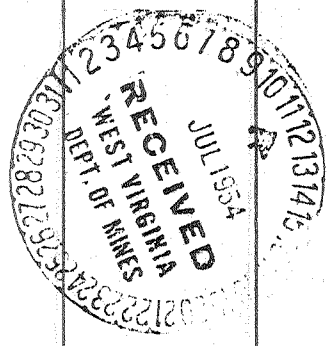
(KIND)

Company Bellemeville Oil & Gas  
Address Bellemeville, W. Va.  
Farm N. A. Staats Acres 45  
Location (waters) Big Pond Creek & Ohio River  
Well No. 2 Elev. 860  
District Harrison County Wood  
The surface of tract is owned in fee by N. A. Staats  
Address Bellemeville, W. Va.  
Mineral rights are owned by \_\_\_\_\_  
Address \_\_\_\_\_  
Drilling commenced October 20, 1953  
Drilling completed December 19, 1953  
Date Shot Dec. 26, 1953 from \_\_\_\_\_ To \_\_\_\_\_  
With 1400 Powder  
Open Flow \_\_\_\_\_ /10ths Water in \_\_\_\_\_ Inch  
\_\_\_\_\_ /10ths Merc. in \_\_\_\_\_ Inch  
Volume 31,000 in Oriskany Cu. Ft.  
Rock Pressure \_\_\_\_\_ lbs. \_\_\_\_\_ hrs.  
Oil \_\_\_\_\_ bbls., 1st 24 hrs.  
Fresh water \_\_\_\_\_ feet \_\_\_\_\_ feet  
Salt water \_\_\_\_\_ feet \_\_\_\_\_ feet

Casing and Tubing	Used in Drilling	Left in Well	Packers
Size			Kind of Packer
16			
18			
10	724.9		Size of
8 3/4	6085.2		
8 1/2		6795.6	Depth set
8			Perf. top
2			Perf. bottom
Liners Used			Perf. top
			Perf. bottom

CASING CEMENTED	SIZE	No. Ft.	Date
COAL WAS ENCOUNTERED AT			
	FEET	INCHES	
	FEET	INCHES	FEET INCHES
	FEET	INCHES	FEET INCHES

Formation	Color	Hard or Soft	Top	Bottom	Oil, Gas or Water	Depth Found	Remarks
Clay	Red		0	15			
Shale			15	25			
Rock	Red		25	70			
Sand			70	102			
Rock	Red		102	155			
Slate & Shell			155	195			
Rock	Red		195	209			
Slate & Shell			209	235			
Sand			235	270			
Slate			270	277			
Sand			277	304			
Rock	Red		304	312			
Shale			312	330			
Rock	Red		330	350			
Slate			350	365			
Sand			365	384			
Slate			384	394			
Rock	Red		394	416			
Slate & Shell			416	437			
Shale			437	458			
Rock	Red		458	470			
Shale			470	485			
Rock	Red		485	505			
Silt. Sand			505	570			
Slate	White		570	603			
Silt. Sand			603	647			
Slate	White		647	672			
Rock	Red		672	694			
Slate	White		694	704			
Sand			704	751			



(Over)

Formation	Color	Hard or Soft	Top	Bottom	Oil, Gas or Water	Depth Found	Remarks
Slate & Shell			751	760			
Rock	Red		760	770			
Shell			770	772			
Slate			772	780			
Rock	Red		780	791			
Slate			791	812			
Rock	Red		812	835			
Slate & Shell			835	852			
Rock	Red		852	867			
Slate & Shell			867	922			
Sand			922	950			
Slate	Black		950	956			
Slate			956	965			
Rock	Pink		965	975			
Thin Shell			975	983			
Rock	Pink		983	992			
Slate			992	998			
Big Dumbard			998	1053			
Slate & Shell			1053	1075			
Sand			1075	1110			
Sandy Shell			1110	1170			
Gas Sand			1170	1236			
Slate	Black		1236	1250			
Wapping Sand			1250	1338			
Slate & Shell			1338	1439			
Salt Sand			1439	1531			
Slate & Lime			1531	1568			
Slate	Black		1568	1600			
Sandy Lime			1600	1632			
Slate			1632	1638			
Dirty Lime			1638	1650			
Slate			1650	1656			
Lime			1656	1671			
Slate & Shell			1671	1728			
Lime			1728	1775			
Slate & Shell			1775	1860			
Lime			1860	1918			
Slate & Shell			1918	2008			
Lime			2008	2018			
Slate			2018	2100			
Shale	Brown - Copper sh.		2100	2116			
Berea Sand			2116	2118			
Lime	Blue		2118	2133			
Slate			2133	2140			
Oriskany			4301	4393			
Oriskany			4393	4430			
31 M gas in Oriskany							
					4301	4393	
					860	860	
					3441	3533	

Date July 8, 1908

APPROVED Bellville Pitt + Geo

By Ralph G. Fanchouse