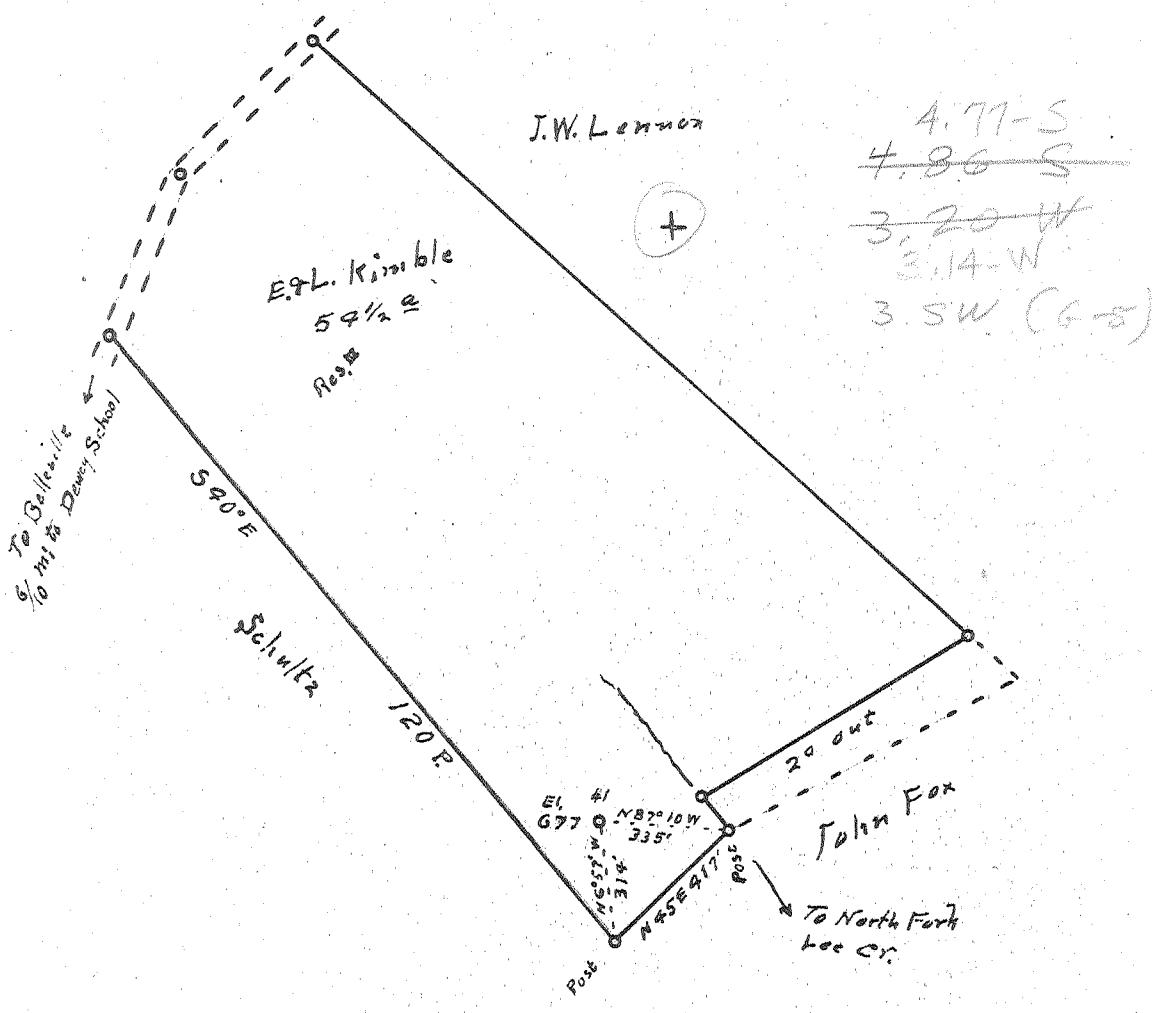


Latitude 39° 15'

Longitude 81° 40'



New Location..    
 Drill Deeper.....    
 Abandonment.....

Company B. H. Putnam Operator   
 Address 1st Nat Bank, Marietta, Ohio   
 Farm Earl & Lucy Kimble   
 Tract \_\_\_\_\_ Acres 54 1/2 Lease No. \_\_\_\_\_   
 Well (Farm) No. 1 Serial No. \_\_\_\_\_   
 Elevation (Spirit Level) 677   
 Quadrangle Belleuille N.W.   
 County Wood District Harris   
 Engineer Robert R. Anderson   
 Engineer's Registration No. 296   
 File No. \_\_\_\_\_ Drawing No. \_\_\_\_\_   
 Date 10/28 53 Scale 1/111 = 30 poles

STATE OF WEST VIRGINIA   
 DEPARTMENT OF MINES   
 OIL AND GAS DIVISION   
 CHARLESTON

**WELL LOCATION MAP**   
 FILE NO. W00-408

+ Denotes location of well on United States Topographic Maps, scale 1 to 62,500, latitude and longitude lines being represented by border lines as shown.   
 - Denotes one inch spaces on border line of original tracing.

66-296 Deepwell



STATE OF WEST VIRGINIA  
DEPARTMENT OF MINES  
OIL AND GAS DIVISION / 7

*Belleville*

WELL RECORD

Permit No. W00-408

Oil or Gas Well Gas  
(KIND)

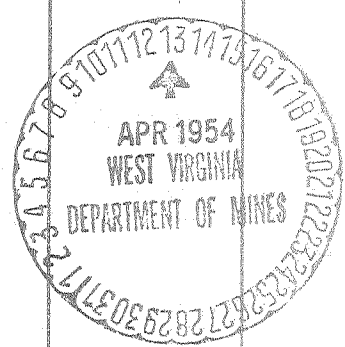
Company B. H. Putnam, Operator  
Address 512 Third Street, Marietta, Ohio  
Farm Earl Kimble Acres 54 1/2  
Location (waters) Ohio River  
Well No. 1 Elev. 677  
District Harris County Wood  
The surface of tract is owned in fee by Same  
Address \_\_\_\_\_  
Mineral rights are owned by Same  
Address \_\_\_\_\_  
Drilling commenced 11-30-53  
Drilling completed 1-30-54  
Date Shot 2-5-54 From \_\_\_\_\_ To \_\_\_\_\_  
With Hydrafrac  
Open Flow \_\_\_\_\_ /10ths Water in \_\_\_\_\_ Inch  
\_\_\_\_\_ /10ths Merc. in \_\_\_\_\_ Inch  
Volume 6000 MCF Cu. Ft.  
Rock Pressure \_\_\_\_\_ lbs. \_\_\_\_\_ hrs.  
Oil none \_\_\_\_\_ bbls., 1st 24 hrs.  
Fresh water none \_\_\_\_\_ feet \_\_\_\_\_ feet  
Salt water none \_\_\_\_\_ feet \_\_\_\_\_ feet

| Casing and Tubing | Used in Drilling | Left in Well | Packers                     |
|-------------------|------------------|--------------|-----------------------------|
| Size              |                  |              |                             |
| 16                |                  |              | Kind of Packer <u>Baker</u> |
| 18                | <u>387</u>       |              | <u>Retrievable</u>          |
| 10                | <u>971</u>       |              | Size of _____               |
| 8 1/4             | <u>1582</u>      | <u>1582</u>  | Depth set _____             |
| 6 3/4             |                  |              |                             |
| 5 3/16            | <u>4095</u>      | <u>4095</u>  |                             |
| 3                 |                  |              | Perf. top _____             |
| 2                 | <u>4095</u>      | <u>4095</u>  | Perf. bottom _____          |
| Liners Used       |                  |              | Perf. top _____             |
|                   |                  |              | Perf. bottom _____          |

CASING CEMENTED 4095 SIZE 5 No. Ft. 1-11-54 Date

COAL WAS ENCOUNTERED AT \_\_\_\_\_ FEET \_\_\_\_\_ INCHES  
\_\_\_\_\_ FEET \_\_\_\_\_ INCHES \_\_\_\_\_ FEET \_\_\_\_\_ INCHES  
\_\_\_\_\_ FEET \_\_\_\_\_ INCHES \_\_\_\_\_ FEET \_\_\_\_\_ INCHES

| Formation        | Color | Hard or Soft | Top  | Bottom | Oil, Gas or Water | Depth Found | Remarks |
|------------------|-------|--------------|------|--------|-------------------|-------------|---------|
| Surface          |       |              | 0    | 54     |                   |             |         |
| Sand             |       |              | 54   | 133    |                   |             |         |
| Slate            |       |              | 133  | 163    |                   |             |         |
| Slate & shells   |       |              | 163  | 198    |                   |             |         |
| Rock             | Red   |              | 198  | 358    |                   |             |         |
| Slate            |       |              | 358  | 560    |                   |             |         |
| Sand             |       |              | 560  | 765    |                   |             |         |
| Slate & shells   |       |              | 765  | 780    |                   |             |         |
| Rock             | Red   |              | 780  | 820    |                   |             |         |
| Lime & shells    |       |              | 820  | 852    |                   |             |         |
| Sand             |       |              | 852  | 875    |                   |             |         |
| Slate            |       |              | 875  | 935    |                   |             |         |
| Slate & shells   |       |              | 935  | 955    |                   |             |         |
| Lime             |       |              | 955  | 962    |                   |             |         |
| Slate            |       |              | 962  | 1012   |                   |             |         |
| Sand             |       |              | 1012 | 1035   |                   |             |         |
| Slate            |       |              | 1035 | 1102   |                   |             |         |
| Lime             |       |              | 1102 | 1274   |                   |             |         |
| Sand             |       |              | 1274 | 1294   |                   |             |         |
| Slate & shells   |       |              | 1294 | 1399   |                   |             |         |
| Sand             |       |              | 1399 | 1521   |                   |             |         |
| Sand & slate     |       |              | 1521 | 1540   |                   |             |         |
| Slate            |       |              | 1540 | 1558   |                   |             |         |
| Slate and shells |       |              | 1558 | 1592   |                   |             |         |
| Slate            |       |              | 1592 | 1603   |                   |             |         |
| Slate and shells |       |              | 1603 | 1624   |                   |             |         |
| Slate            | 1624  |              | 1674 |        |                   |             |         |
| Lime             |       |              | 1674 | 1682   |                   |             |         |
| Slate and shells |       |              | 1682 | 1883   |                   |             |         |
| Shale            |       |              | 1883 | 1890   |                   |             |         |
| Sand             |       |              | 1890 | 1893   |                   |             |         |
| Slate and shells |       |              | 1893 | 1903   |                   |             |         |
| Lime             |       |              | 1903 | 1935   |                   |             |         |
| Slate and shells |       |              | 1935 | 2814   |                   |             |         |
| Slate            | 2814  |              | 2824 | 2921   |                   |             |         |
| Slate and shells |       |              | 2921 | 2975   |                   |             |         |
| Shale            |       |              | 2975 | 3063   |                   |             |         |
| Slate and shells |       |              | 3063 | 3347   |                   |             |         |
| Shale            | Brown |              | 3347 | 3385   |                   |             |         |



| Formation        | Color | Hard or Soft | Top  | Bottom | Oil, Gas or Water | Depth Found | Remarks |
|------------------|-------|--------------|------|--------|-------------------|-------------|---------|
| Shale            |       |              | 3385 | 3519   |                   |             |         |
| Slate            |       |              | 3519 | 3612   |                   |             |         |
| Slate and shells |       |              | 3612 | 3656   |                   |             |         |
| Slate            |       |              | 3656 | 3759   |                   |             |         |
| Slate and shells |       |              | 3759 | 3868   |                   |             |         |
| Shale            |       |              | 3868 | 4018   | 4018              | 4113        |         |
| Lime - Onondaga  |       |              | 4018 | 4113   | 677               | 677         |         |
| Sand - ORISKANY  |       |              | 4113 | 4118   |                   |             |         |
|                  |       |              |      | (475)  | 3341              | 3436        |         |

Date \_\_\_\_\_, 19\_\_

APPROVED \_\_\_\_\_, Owner

By \_\_\_\_\_