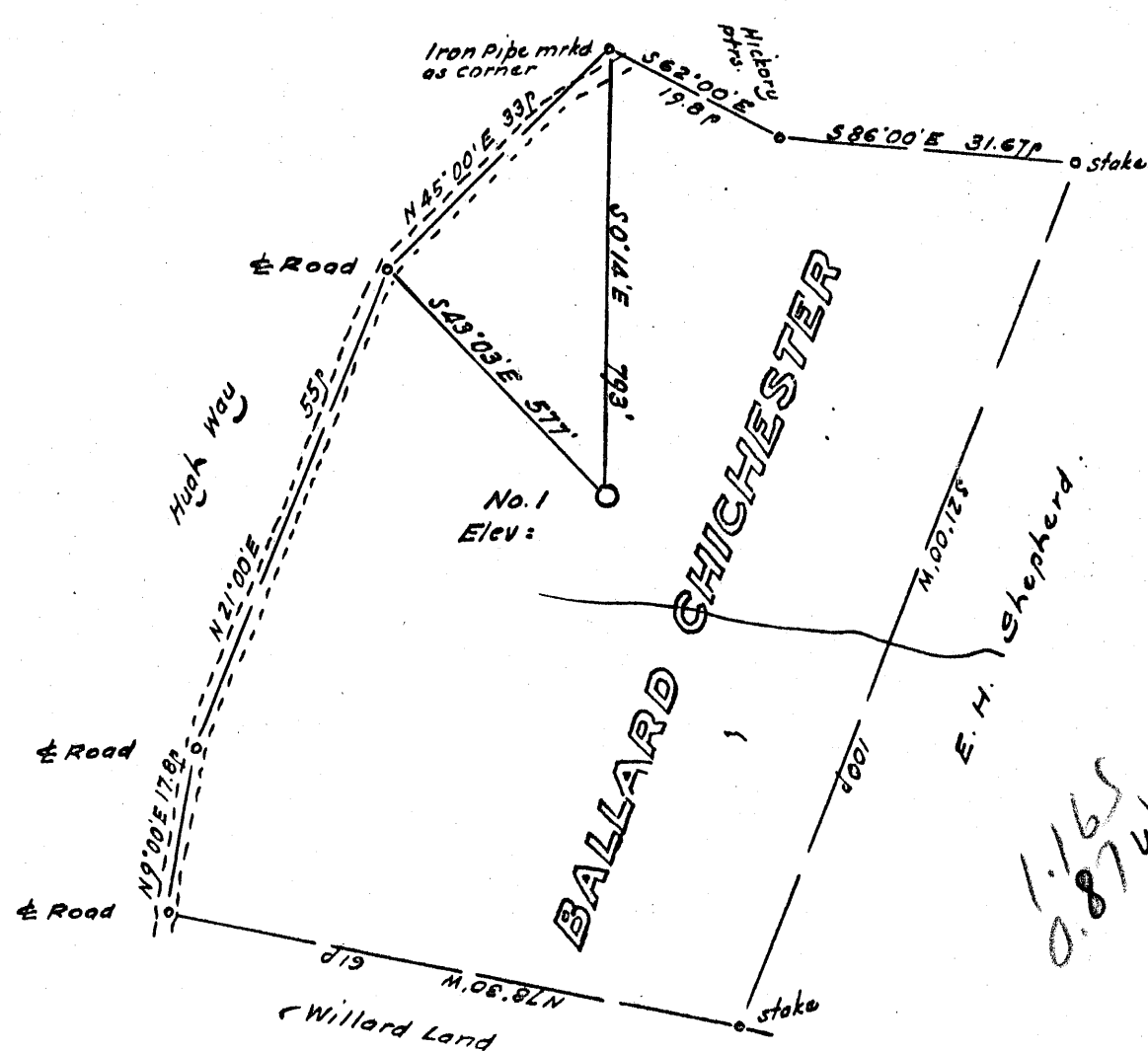


LATITUDE 39 ° 20 '

LONGITUDE 81 ° 30 '



Minimum Error of Closure 1 in 200  
 Source of Elevation Elev. forks of road to North - 853'

I, the undersigned, hereby certify that this map is correct to the best of my knowledge and belief and shows all the information required by paragraph 6 of the rules and regulations of the oil and gas section of the mining laws of West Virginia.

- Fracture.....
- New Location.....
- Drill Deeper.....
- Abandonment.....

Signed: *W. H. Street*  
 Squares: N S E W

Map No. \_\_\_\_\_

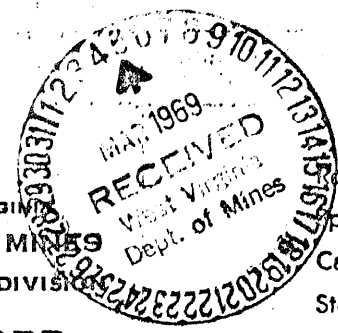
Company Shield Petroleum Corp.  
 Address 3241 E. Sharon Road, Cincinnati, Ohio  
 Farm Ballard Gichester  
 Tract \_\_\_\_\_ Acres 33 Lease No. \_\_\_\_\_  
 Well (Farm) No. One Serial No. \_\_\_\_\_  
 Elevation (Spirit Level) 783'  
 Quadrangle Partersburg (36)  
 County Wood District Williams  
 Engineer *W. H. Street*  
 Engineer's Registration No. 1227  
 File No. \_\_\_\_\_ Drawing No. \_\_\_\_\_  
 Date Nov. 23, 1968 Scale 1" = 300' = 495'

STATE OF WEST VIRGINIA  
 DEPARTMENT OF MINES  
 OIL AND GAS DIVISION  
 CHARLESTON

WELL LOCATION MAP  
 FILE NO. W00-585

+ Denotes location of well on United States Topographic Maps, scale 1 to 62,500, latitude and longitude lines being represented by border lines as shown.

- Denotes one inch spaces on border line of original tracing.



STATE OF WEST VIRGINIA  
DEPARTMENT OF MINES  
OIL AND GAS WELLS DIVISION

- Rotary
- Mudder
- Cable Tools
- Storage

Quadrangle Parkersburg

Permit No. W00-585

**WELL RECORD**

Oil or Gas Well Gas (KIND)

Company Shield Petroleum Corporation  
Address 3249 East Sharon Road, Cinti, Ohio 45241  
Farm Ballard Chichester Acres 33  
Location (waters) \_\_\_\_\_  
Well No. #1-Chichester Elev. 783'  
District Williams County Wood  
The surface of tract is owned in fee by Ballard Chichester  
Parkersburg Address West Virginia

Mineral rights are owned by Shield Petroleum Corporation  
3249 East Sharon Rd. Address Cincinnati, Ohio 45241

Drilling commenced 12-30-68  
Drilling completed 2-12-69

Date Shot --- From --- To ---

With \_\_\_\_\_

Open Flow /10ths Water in \_\_\_\_\_ Inch  
/10ths Merc. in \_\_\_\_\_ Inch

Volume \_\_\_\_\_ Cu. Ft.

Rock Pressure \_\_\_\_\_ lbs. \_\_\_\_\_ hrs.

Oil \_\_\_\_\_ bbls., 1st 24 hrs.

WELL ACIDIZED (DETAILS) \_\_\_\_\_

WELL FRACTURED (DETAILS) Dowell-2/19/69, 500 gal mud acid, 800 bbls. fresh treated water,  
24,000 lbs 10/20 bulk sand, 24,000 20/40 bulk sand

RESULT AFTER TREATMENT (Initial open Flow or bbls.) 381,000 cf gas 381 MCF

ROCK PRESSURE AFTER TREATMENT 220lbs. HOURS 24 hrs.

Fresh Water \_\_\_\_\_ Feet \_\_\_\_\_ Salt Water 1435 to 1475 Feet

Producing Sand Gordon Sand Depth 2,468 to 2,493'

Casing and Tubing	Used in Drilling	Left in Well	Packers
Size			Kind of Packer
16			
13			
10 800'	800'	0'	Size of
8 1/4	1042'	500'	
6 3/4	1953'	0'	Depth set
5 3/16			
4 1/2	2544'	2544'	
3			Perf. top <u>2,477</u>
2			Perf. bottom <u>2,485'</u>
Liners Used			Perf. top _____
			Perf. bottom _____

Attach copy of cementing record.

CASING CEMENTED 4 1/2 SIZE 2544 No. Ft. 2/15/69 Date

Amount of cement used (bags) 125 bags

Name of Service Co. Dowell

COAL WAS ENCOUNTERED AT \_\_\_\_\_ FEET \_\_\_\_\_ INCHES

\_\_\_\_\_ FEET \_\_\_\_\_ INCHES \_\_\_\_\_ FEET \_\_\_\_\_ INCHES

\_\_\_\_\_ FEET \_\_\_\_\_ INCHES \_\_\_\_\_ FEET \_\_\_\_\_ INCHES

Formation	Color	Hard or Soft	Top	Bottom	Oil, Gas or Water	Depth	Remarks
Surface			0'	10'			
Clay			10'	50'			
Sand			50'	60'			
Shale			60'	350'			
Sand			350'	400'			
Shale & Slate			400'	850'			
Shale			850'	1200'			
Sand			1200'	1225'	Gas	1200'	Very Slight Sho
Shale			1225'	1435'			
Sand			1435'	1475'	Water	1435'	Salt Water
Shale			1475'	1485'			
Sand			1485'	1535'			
Shale			1535'	1695'			
Slate & Shale			1695'	1850'			
Sand			1850'	1920'			
Shale			1920'	2050'			
Sand			2050'	2110'			
Shale			2110'	2156'			
Sand			2156'	2172'	Gas	2156'	Show
Shale			2172'	2220'			
Sand			2220'	2350'			
Shale			2350'	2468'			
Sand <u>Gordon</u>			2468'	2493'	Gas	2468'	Show
Shale & Slate			2493'	2544'			
Total Depth			2,544 ft/				