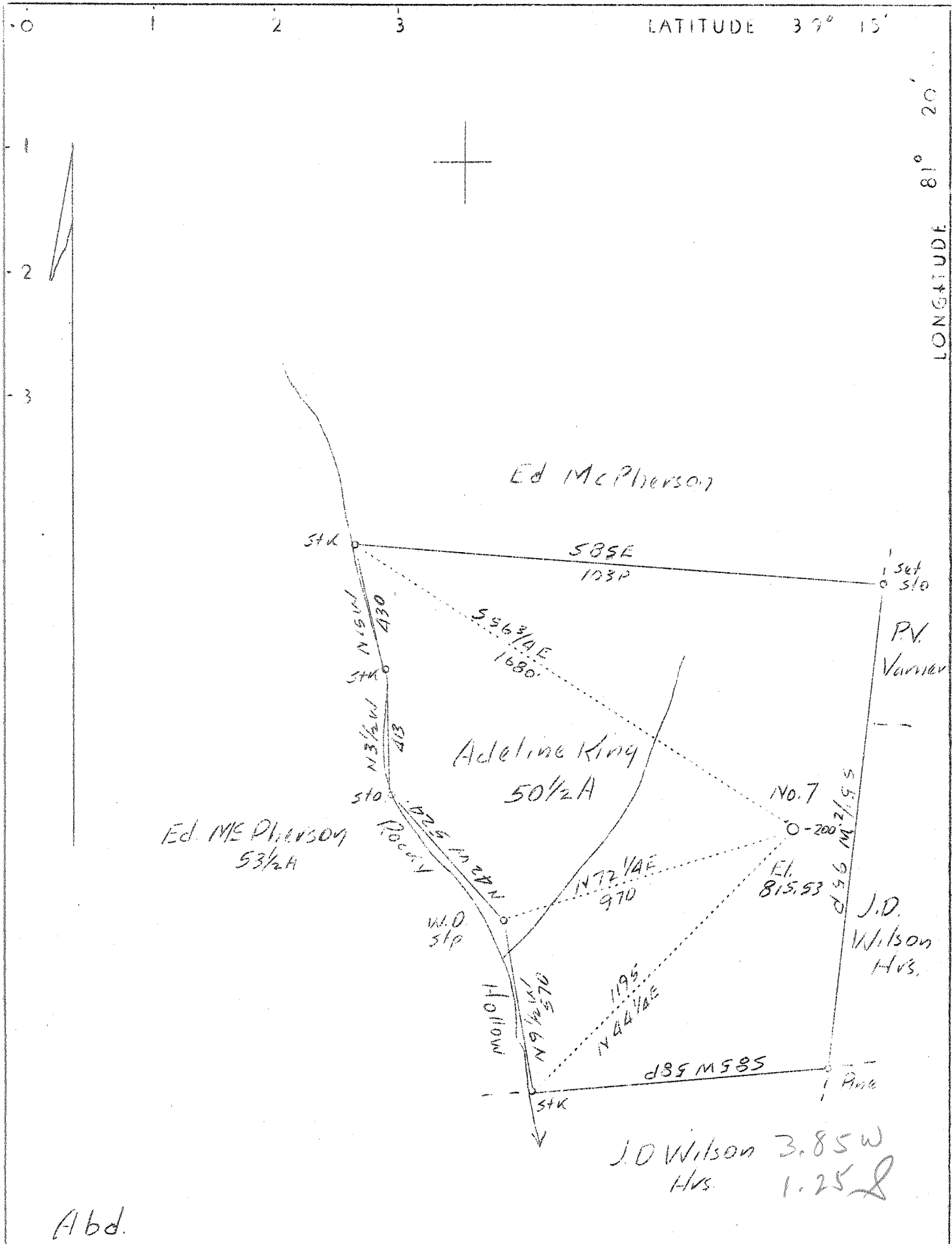


LATITUDE 39° 15'

LONGITUDE 81° 20'



Abd.

Company	South Penn Oil Co.
Address	411 Seventh Ave., Pittsburgh, Pa.
Farm	Adeline King
Tract	Acres 121 Lease No. 52576
Well (Farm) No.	7 Serial No.
Quadrangle	Elizabeth
County	Wood
District	Walker
Engineer	E.C. Tabler
Engineer's Registration No.	
File No.	Drawing No.
Date	11-19-37 Scale 1"-400'

STATE OF WEST VIRGINIA
 Department of Mines
 OIL AND GAS DIVISION
 CHARLESTON

WELL LOCATION MAP

File No. W00-108A

+ Denotes location of well on United States Topographic Maps, scale 1 to 62,500, latitude and longitude lines being represented by border lines as shown.

— Denotes one inch spaces on border line of original tracing.