

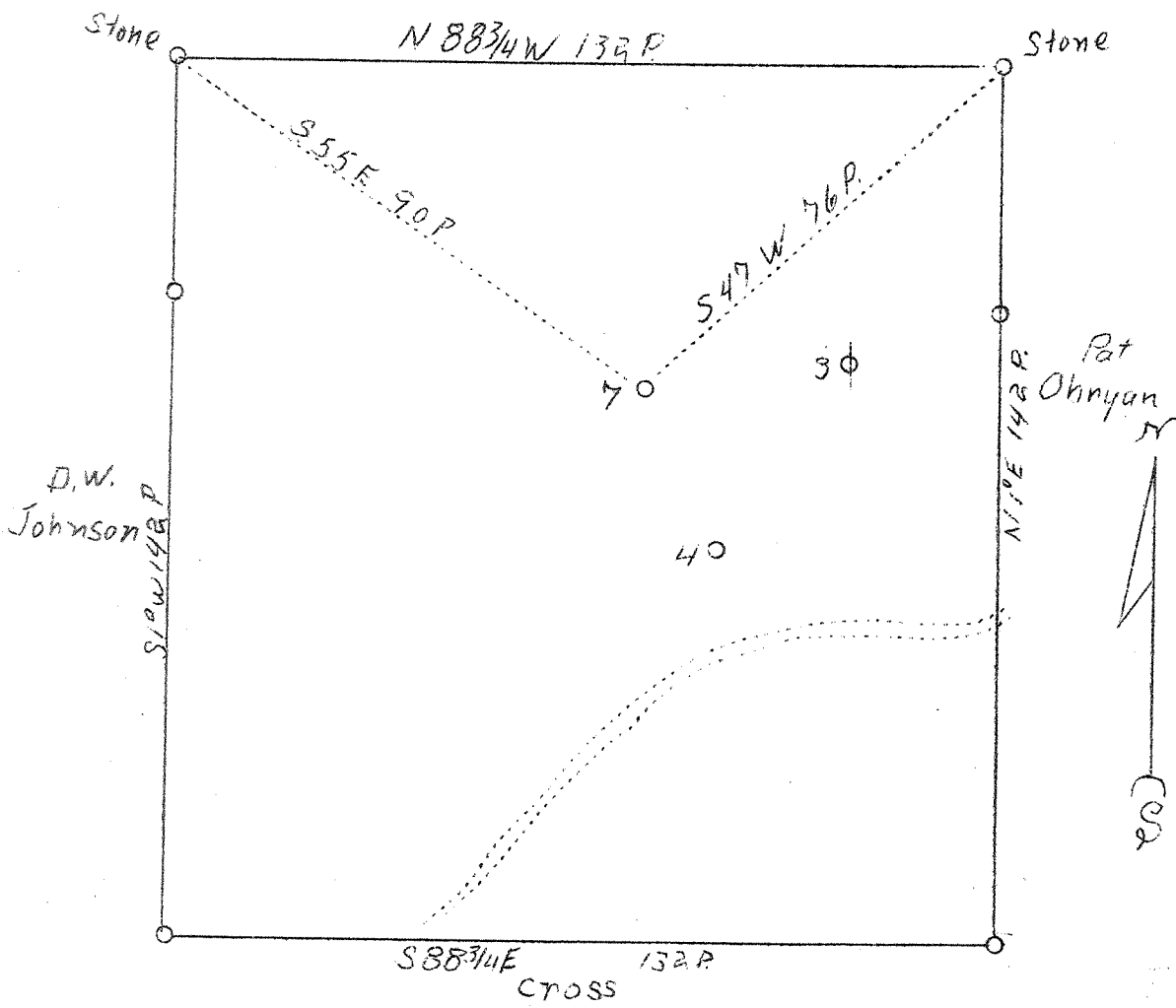
1 2 3

LATITUDE 39° 20'

LONGITUDE 81° 20'

1  
2  
3

Richardson



45 S  
11 W

ABD.

Company Albert Congdon  
 Address Parkersburg  
 Farm Chas. A. Bartlett  
 Acres 119  
 Well (Farm) No. 7  
 Elevation 871 (Spirit Level)  
 Quadrangle Marietta S.W.  
 County Wood  
 District Union  
 Engineer O. Meredith (Surveyor)  
 Date June 14  
 Scale 1" = 30 poles

STATE OF WEST VIRGINIA  
 Department of Lines  
 OIL & GAS DIVISION

WELL LOCATION MAP

Woo-122-A

X Denotes location of well on U. S. Topographic Maps, scale 1 to 62,500, latitude and longitude lines being represented by border lines as shown.

- Denotes one inch spaces on border line of original tracing.