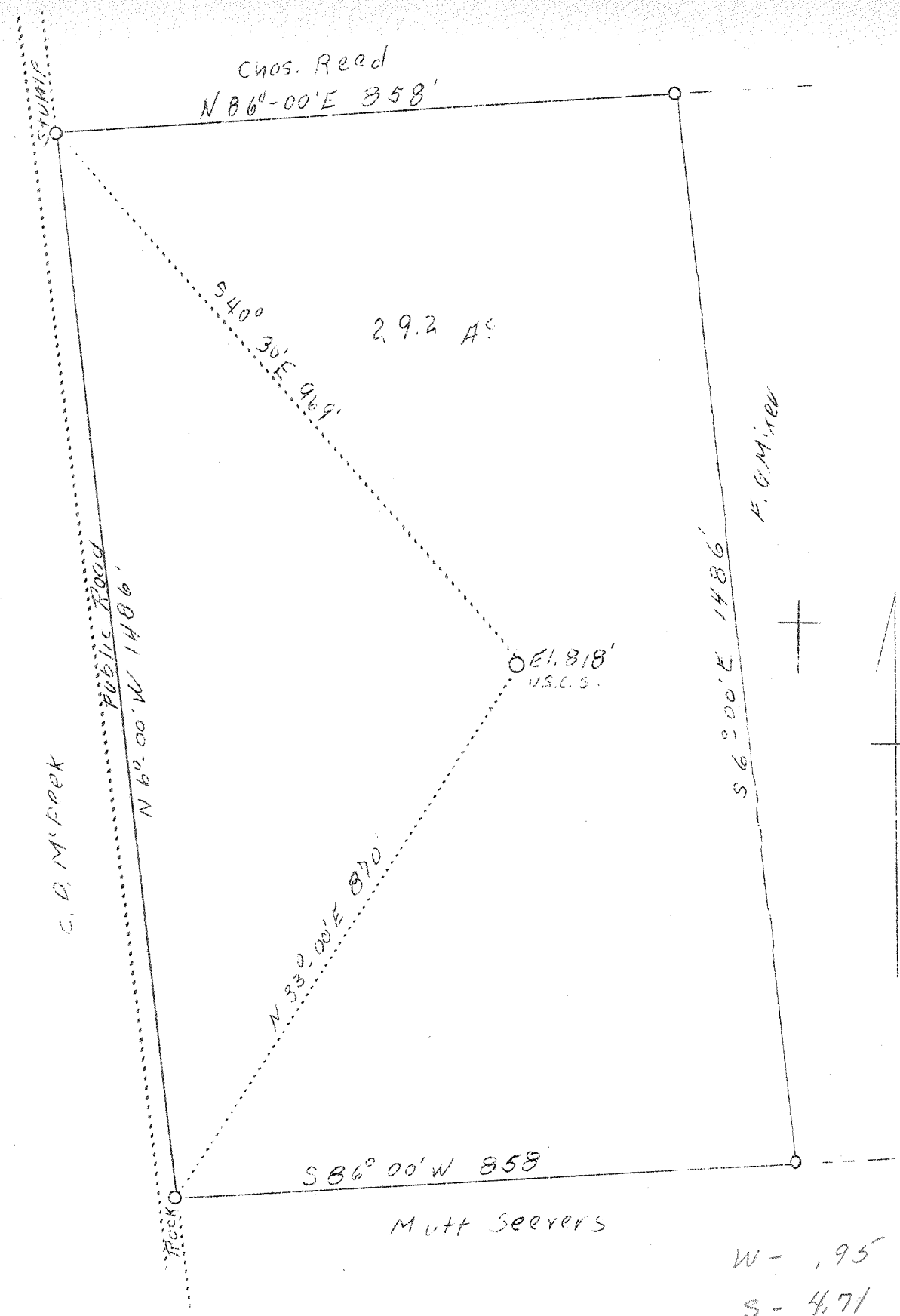


LATITUDE 39° 25'

LONGITUDE 81° 25'



HBD.

W - .95  
S - 4.71

Company	F. G. Mixer
Address	Williamstown, W. Va.
Farm	C. D. McPeek
Acres	29.2
Well (Farm) No.	-
Elevation (SP)	818
Quadrangle	Marietta WC
County	Wood
District	Williams
Engineer	George R. Clarke
Eng. Reg. No.	102
Date	Oct. 7, 1938
Scale	1" - 200'

STATE OF WEST VIRGINIA  
 Department of Mines  
 OIL & GAS DIVISION  
 Charleston

WELL LOCATION MAP

File No. Woo-127-A

x Denotes location of well on U. S. Topographic Maps, scale 1 to 62,500, latitude and longitude lines being represented by border lines as shown.

- Denotes one inch spaces on border line of original tracing.