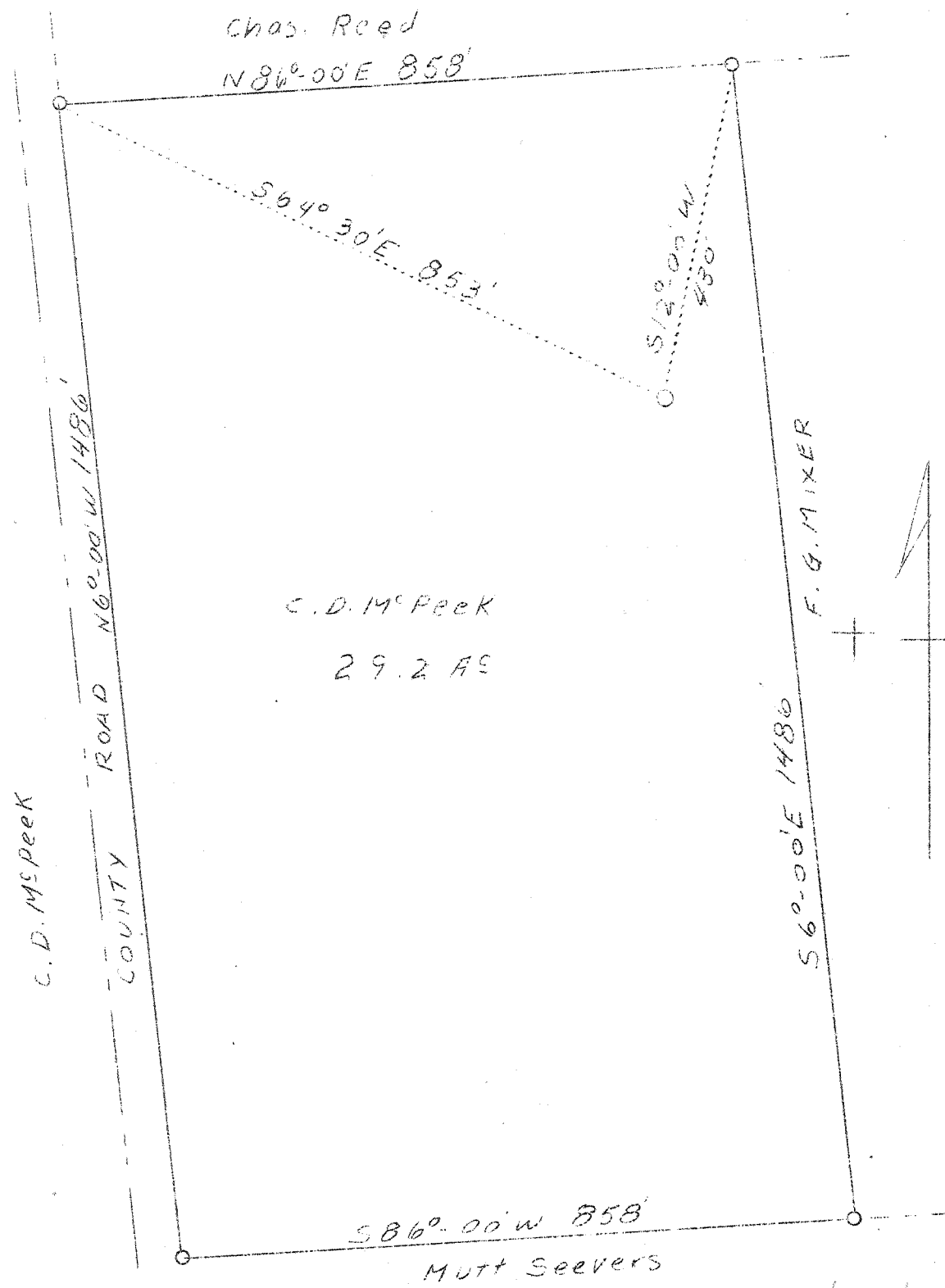


LATITUDE 39° 25'

LONGITUDE 81° 25'



ABD.

Company R. V. Porter  
 Address Marietta, Rt. - 4 Ohio  
 Farm C. D. McPeck  
 Acres 29.2  
 Well (Farm) No. 3  
 El. (S. L.) 793  
 Quadrangle Marietta  
 County Wood  
 District Williams  
 Eng. George R. Clarke  
 Eng. Reg. No. 102  
 Date 2/22/39  
 Scale 1" - 200'

STATE OF WEST VIRGINIA  
 Department of Mines  
 OIL AND GAS DIVISION  
 Charleston

WELL LOCATION MAP

File No. Woo-130-A

x Denotes location of well on U.S. Topographic Maps, scale 1 to 62,500, latitude and longitude lines being represented by border lines as shown.

- Denotes one inch spaces on border lines of original tracing.