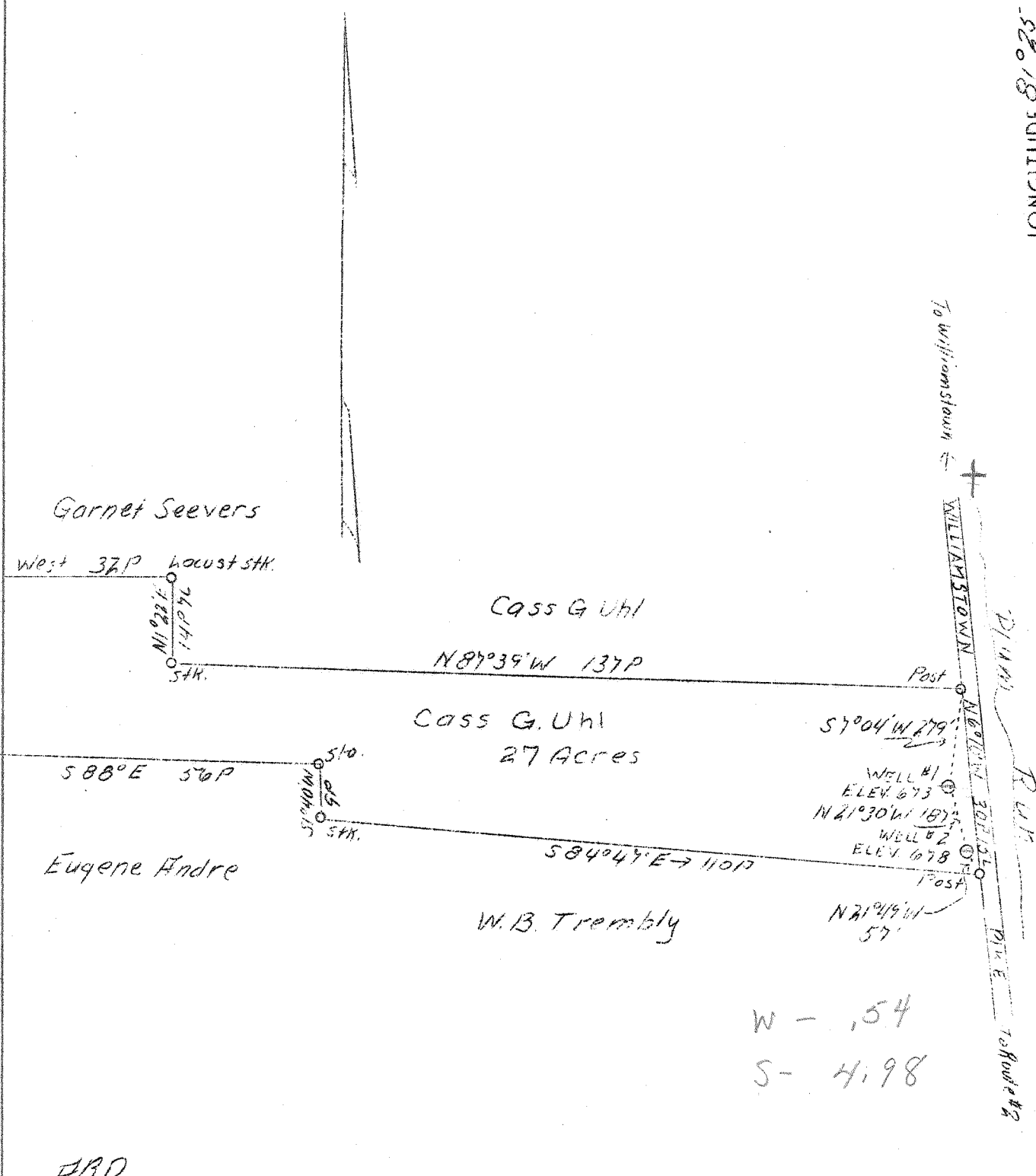


LATITUDE 39° 25'

LONGITUDE 81° 25'



Company Tri-County Producing Co.  
 Address Parkersburg, W. Va.  
 Farm Cass G. Uhl  
 Acres 27  
 Well (Farm) No. 1 and 2  
 Elevation (SL) #1 673 - #2 678  
 Quadrangle Marietta W O. - W. Va.  
 County Wood  
 District Williams  
 Engineer Parker E. Peters  
 Eng. Reg. No. 485  
 Date July 15, 1939  
 Scale 1" = 400'

STATE OF WEST VIRGINIA  
 Department of Mines  
 OIL & GAS DIVISION  
 Charleston

WELL LOCATION MAP  
 File No. W100-145 & 146 A

x Denotes location of well on U. S. Topographic Maps, scale 1 to 62,500, latitude and longitude lines being represented by border lines as shown.  
 - Denotes one inch spaces on border line of original tracing.