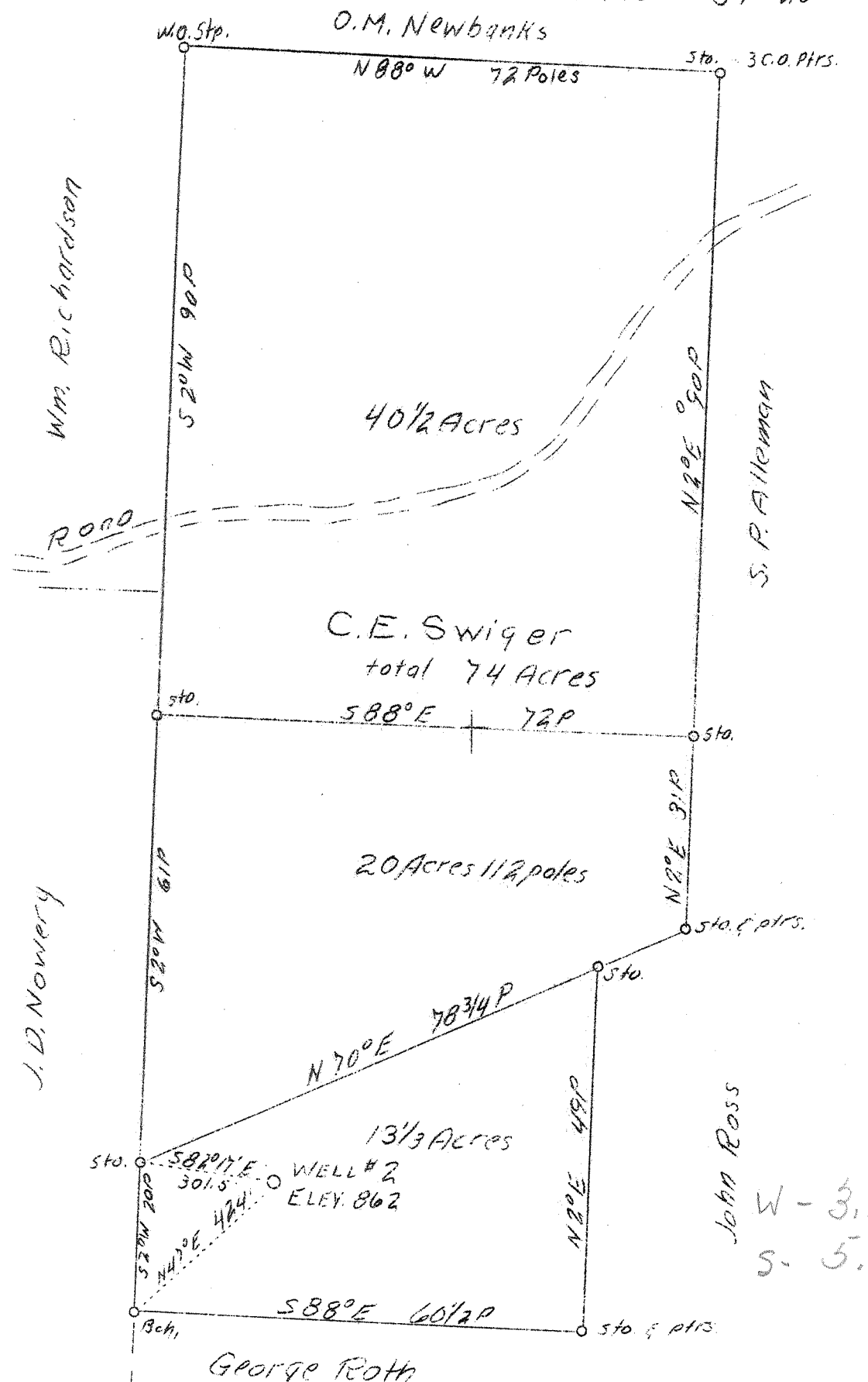


LATITUDE 39° 20'

LONGITUDE 81° 20'



Wm. Richardson

O.M. Newbanks

N 88° W 72 Poles

40 1/2 Acres

C.E. Swiger
total 74 Acres

S 88° E 72 P

20 Acres 1/2 poles

N 70° E 78 3/4 P

13 1/3 Acres

S 88° E 60 1/2 P

George Roth

J.D. Nowery

John Ross

W - 3.16
S - 5.12

ABD.

Company	Tait, Hiteshow & Walker
Address	Parkersburg, W. Va.
Farm	C. E. Swiger
Acres	74
Well (Farm) No.	2
Elevation (SL)	862
Quadrangle	Marietta, S.O. - W. Va.
County	Wood
District	Union
Engineer	Parker E. Peters
Eng. Reg. No.	485
Date	July 15, 1939
Scale	1" - 20 poles

STATE OF WEST VIRGINIA
 Department of Mines
 OIL & GAS DIVISION
 Charleston

WELL LOCATION MAP

File No. Woo-147-A

x Denotes location of well on U. S. Topographic Maps, scale 1 to 62,500, latitude and longitude lines being represented by border lines as shown.

- Denotes one inch spaces on border line of original tracing.