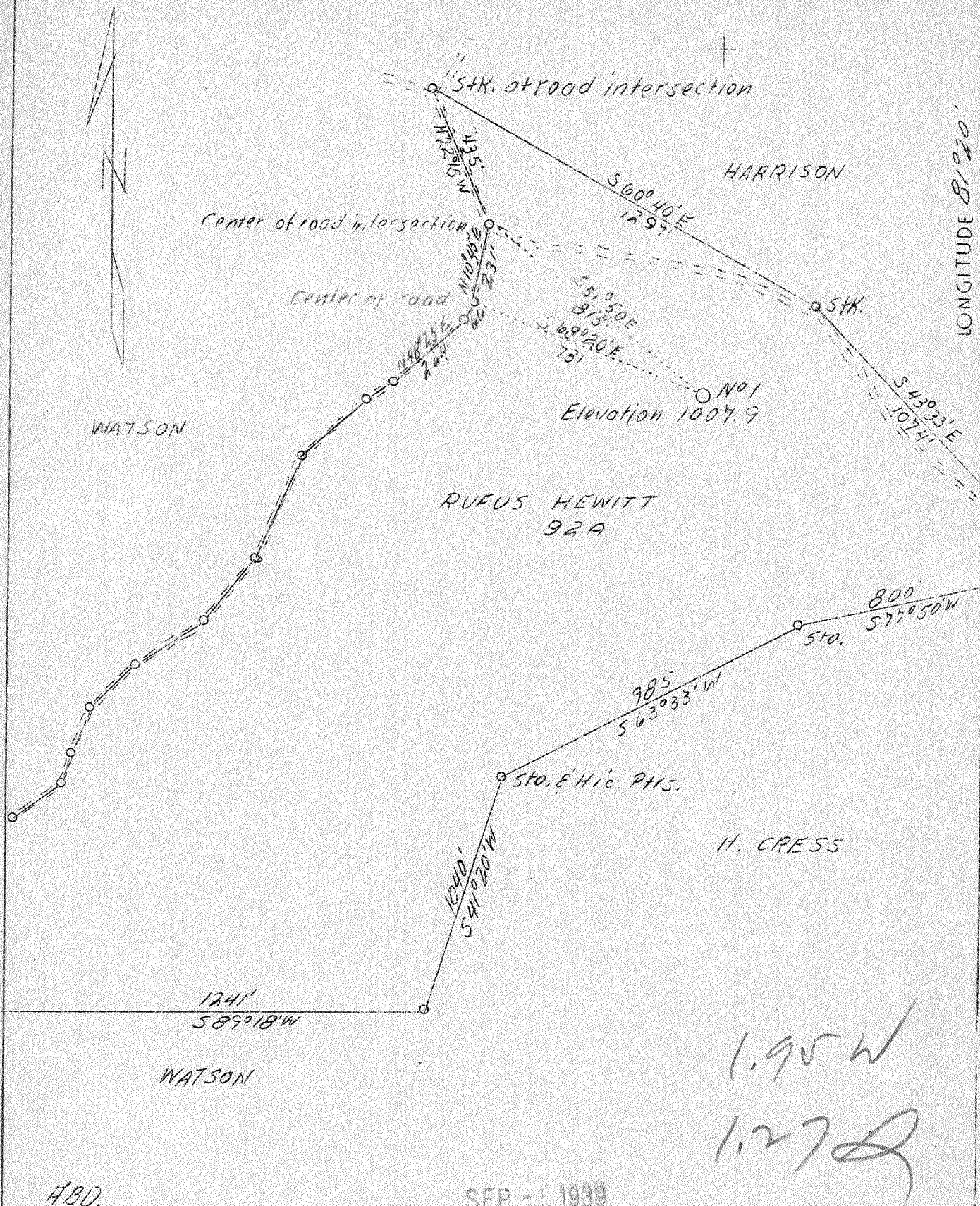


LATITUDE 39°15'

LONGITUDE 81°20'



A.B.D.

SEP - 5 1939

Company C. B. Watson  
 Address Parkersburg, W. Va.  
 Farm Rufus Hewitt  
 Acres 92  
 Well (Farm) No. 1  
 Elevation (SL) 1007.9  
 Quadrangle Elizabeth  
 County Wood  
 District Walker  
 Engineer B. F. Rinehart  
 Eng. Reg. No. 648  
 Drawing No. 195-W-W  
 Date August 10, 1939  
 Scale 1" = 400'

NC

STATE OF WEST VIRGINIA  
 Department of Mines  
 OIL & GAS DIVISION  
 Charleston

WELL LOCATION MAP

File No. W00-158-A

x Denotes location of well on U. S. Topographic Maps, scale 1 to 62,500, latitude and longitude lines being represented by border lines as shown.

- Denotes one inch spaces on border line of original tracing.