

New Location   
 Drill Deeper   
 Abandonment

Company W. I. Gettman  
 Address 812 Colum. Av. Williams town, W. Va.  
 Farm Joanna Drake  
 Tract \_\_\_\_\_ Acres 155 Lease No. \_\_\_\_\_  
 Wells (Farm) No. 12, 13, 14, 15 Serial No. \_\_\_\_\_  
 Elevation (Spirit Level) #12 818 #13 850 #14 826 #15 835  
 Quadrangle Marietta  
 County Wood District Williams  
 Engineer Robert H. Anderson  
 by O. Meredith  
 Engineer's Registration No. 236  
 File No. \_\_\_\_\_ Drawing No. \_\_\_\_\_  
 Date Jan 26 1949 Scale 1 in = 20 Poles

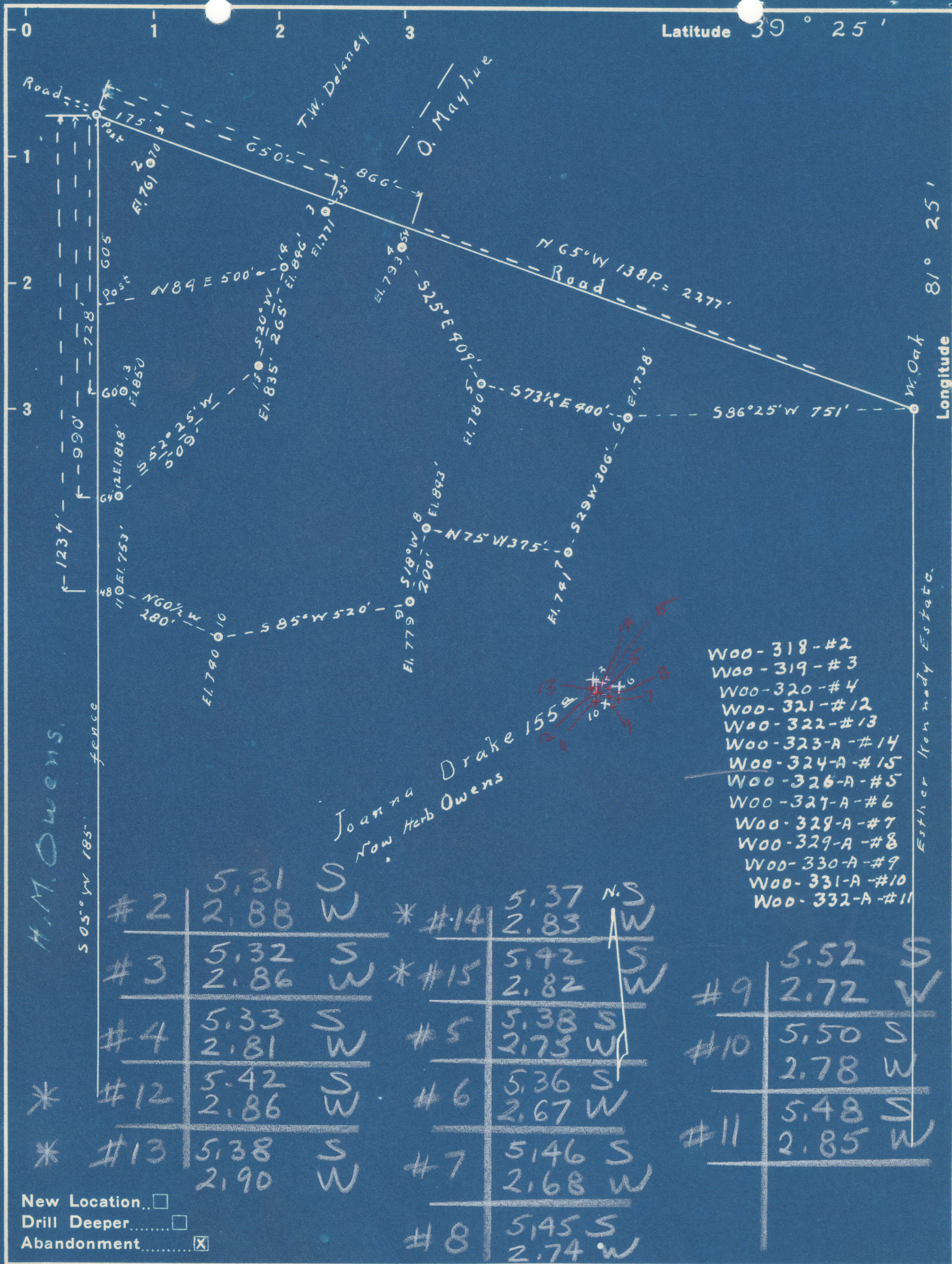
STATE OF WEST VIRGINIA  
 DEPARTMENT OF MINES  
 OIL AND GAS DIVISION  
 CHARLESTON

**WELL LOCATION MAP**

W00-321-A-#12  
 FILE NO. W00-322-A-#13  
 W00-323-A-#14  
 W00-324-A-#15

+ Denotes location of well on United States Topographic Maps, scale 1 to 62,500, latitude and longitude lines being represented by border lines as shown.

- Denotes one inch spaces on border line of original tracing.



Company W. I. Gettman  
 Address 812 Colum. Av. Williams town W. Va.  
 Farm Joanna Drake (now Herb Owens)  
 Tract \_\_\_\_\_ Acres 15.5 Lease No. \_\_\_\_\_  
 Well (Farm) No. 1 to 15 Serial No. \_\_\_\_\_  
 Elevation (Spirit Level) 261 271 273 280 238 241 243 249 240 253 218 250 286 285  
 Quadrangle Marietta  
 County Wood District Williams  
 Engineer Robert R. Anderson  
 Engineer's Registration No. 296  
 File No. \_\_\_\_\_ Drawing No. \_\_\_\_\_  
 Date Jan 7 49 Scale 1 in = 20 Poles

STATE OF WEST VIRGINIA  
 DEPARTMENT OF MINES  
 OIL AND GAS DIVISION  
 CHARLESTON

WELL LOCATION MAP

FILE NO. See ABOVE

+ Denotes location of well on United States Topographic Maps, scale 1 to 62,500, latitude and longitude lines being represented by border lines as shown.

- Denotes one inch spaces on border line of original tracing.

\* See Woo-321-A