

New Location   
 Drill Deeper   
 Abandonment

Company W. I. Gettman  
 Address 812 Colum. Av. Williams town W. Va.  
 Farm Joanna Drake (now Herb Owens)  
 Tract \_\_\_\_\_ Acres 15.5 Lease No. \_\_\_\_\_  
 Well (Farm) No. 26 15 Serial No. \_\_\_\_\_  
 Elevation (Spirit Level) 767 771 773 780 771 779 770 753 818 850 886 835  
 Quadrangle Maria tta  
 County Wood District Williams  
 Engineer Robert R. Anderson  
 by O. Meredith  
 Engineer's Registration No. 296  
 File No. \_\_\_\_\_ Drawing No. \_\_\_\_\_  
 Date Jan 7 49 Scale 1 in = 20 Poles

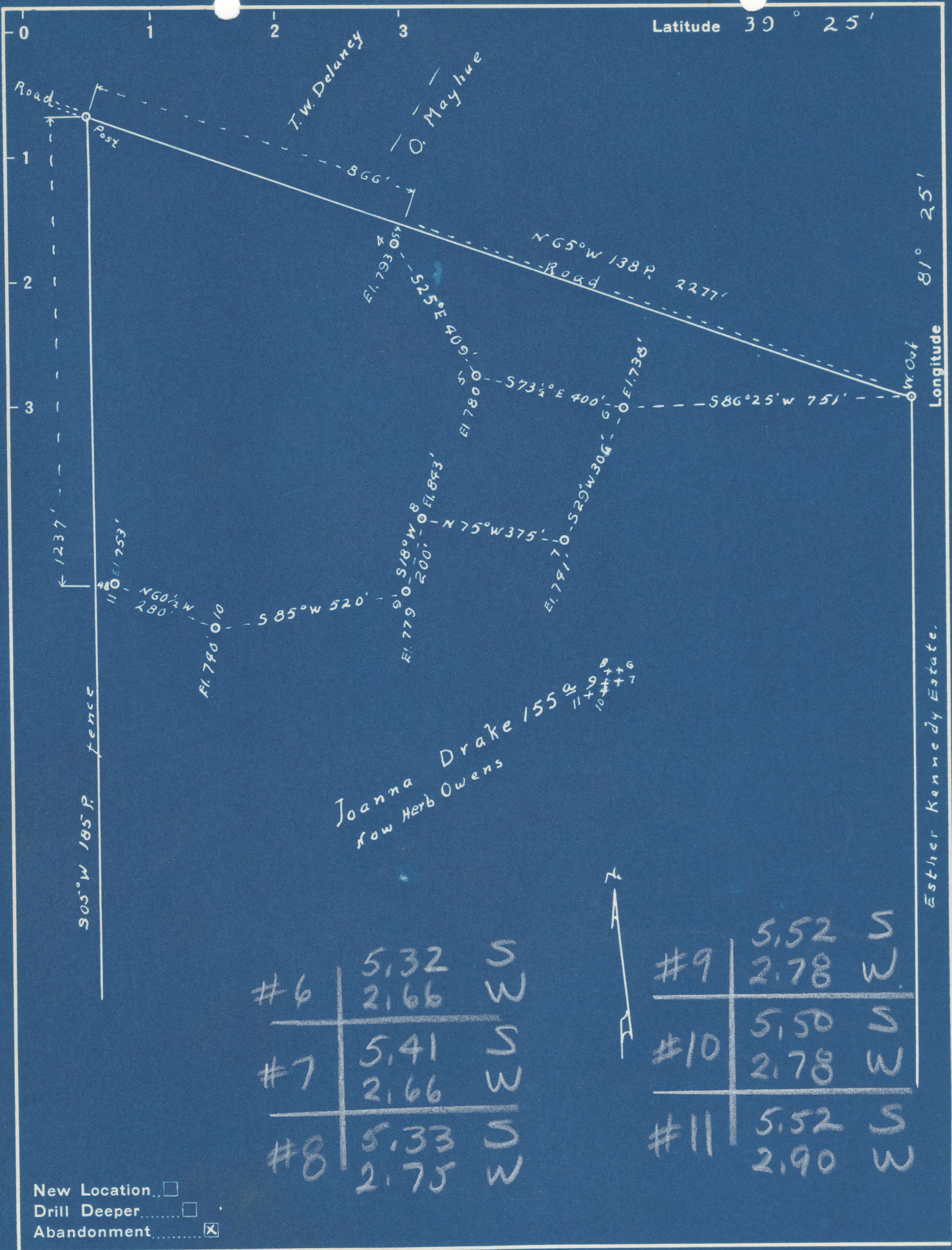
STATE OF WEST VIRGINIA  
 DEPARTMENT OF MINES  
 OIL AND GAS DIVISION  
 CHARLESTON

**WELL LOCATION MAP**

FILE NO. See ABOVE

+ Denotes location of well on United States Topographic Maps, scale 1 to 62,500, latitude and longitude lines being represented by border lines as shown.  
 - Denotes one inch spaces on border line of original tracing.

\* See Woo-321-A



New Location   
 Drill Deeper   
 Abandonment

Company W. I. Gettman  
 Address 812 Colym. Av. Williamstown, W. Va.  
 Farm Joanna Drake (now Herb Owens)  
 Tract \_\_\_\_\_ Acres 155 Lease No. \_\_\_\_\_  
 Well (Farm) No. 21011 Serial No. \_\_\_\_\_  
 Elevation (Spirit Level) #9 - 719 #10 - 740 #11 - 753  
 Quadrangle Marietta  
 County Wood District Williams  
 Engineer Robert R. Anderson  
 by O. Meredith  
 Engineer's Registration No. 296  
 File No. \_\_\_\_\_ Drawing No. \_\_\_\_\_  
 Date Apr 11 1949 Scale 1 in = 20 Poles.

STATE OF WEST VIRGINIA  
 DEPARTMENT OF MINES  
 OIL AND GAS DIVISION  
 CHARLESTON

WELL LOCATION MAP  
 FILE NO. W00-330A-#9  
W00-331A-#10  
W00-332A-#11

+ Denotes location of well on United States Topographic Maps, scale 1 to 62,500, latitude and longitude lines being represented by border lines as shown.

- Denotes one inch spaces on border line of original tracing.