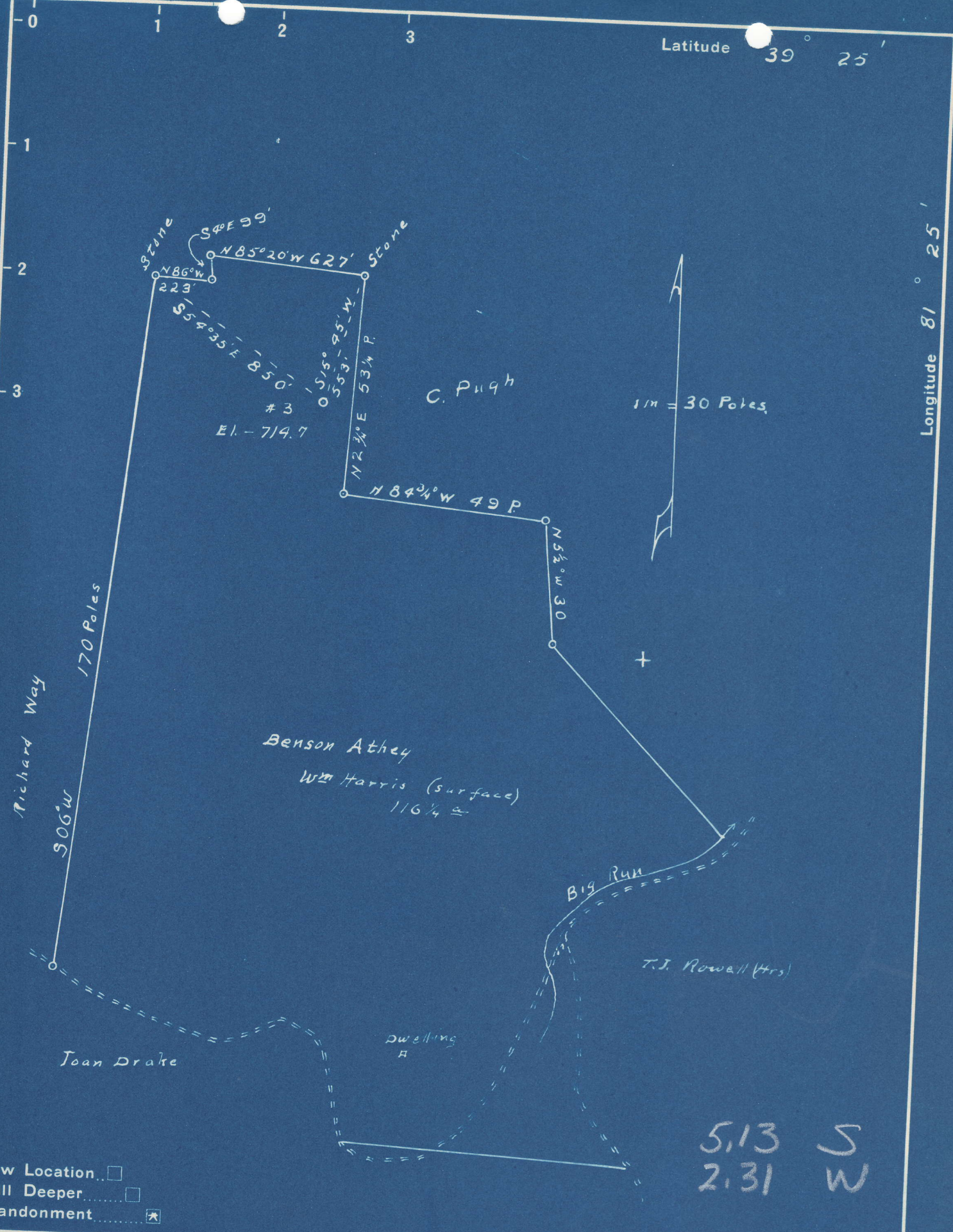


Latitude 39° 25'

Longitude 81° 25'



- New Location
- Drill Deeper
- Abandonment

5,13 S
2,31 W

Company W. I. Gettman
 Address 812 Columbia Av. Williamstown, W. Va.
 Farm B. Athey Wm Harris (surface)
 Acres 116 1/4 Lease No. _____
 Well (Farm) No. 3 Serial No. _____
 Elevation (Spirit Level) 714.7'
 Quadrangle Marietta
 County Wood District Williams
 Engineer Robert C. Meredith
 Engineer's Registration No. _____
 No. _____ Drawing No. _____
 Date Sept 30, 99 Scale 1 in = 30 Poles

STATE OF WEST VIRGINIA
 DEPARTMENT OF MINES
 OIL AND GAS DIVISION
 CHARLESTON

WELL LOCATION MAP
 FILE NO. W00-344-A

+ Denotes location of well on United States Topographic Maps, scale 1 to 62,500, latitude and longitude lines being represented by border lines as shown.

- Denotes one inch spaces on border line of original tracing.