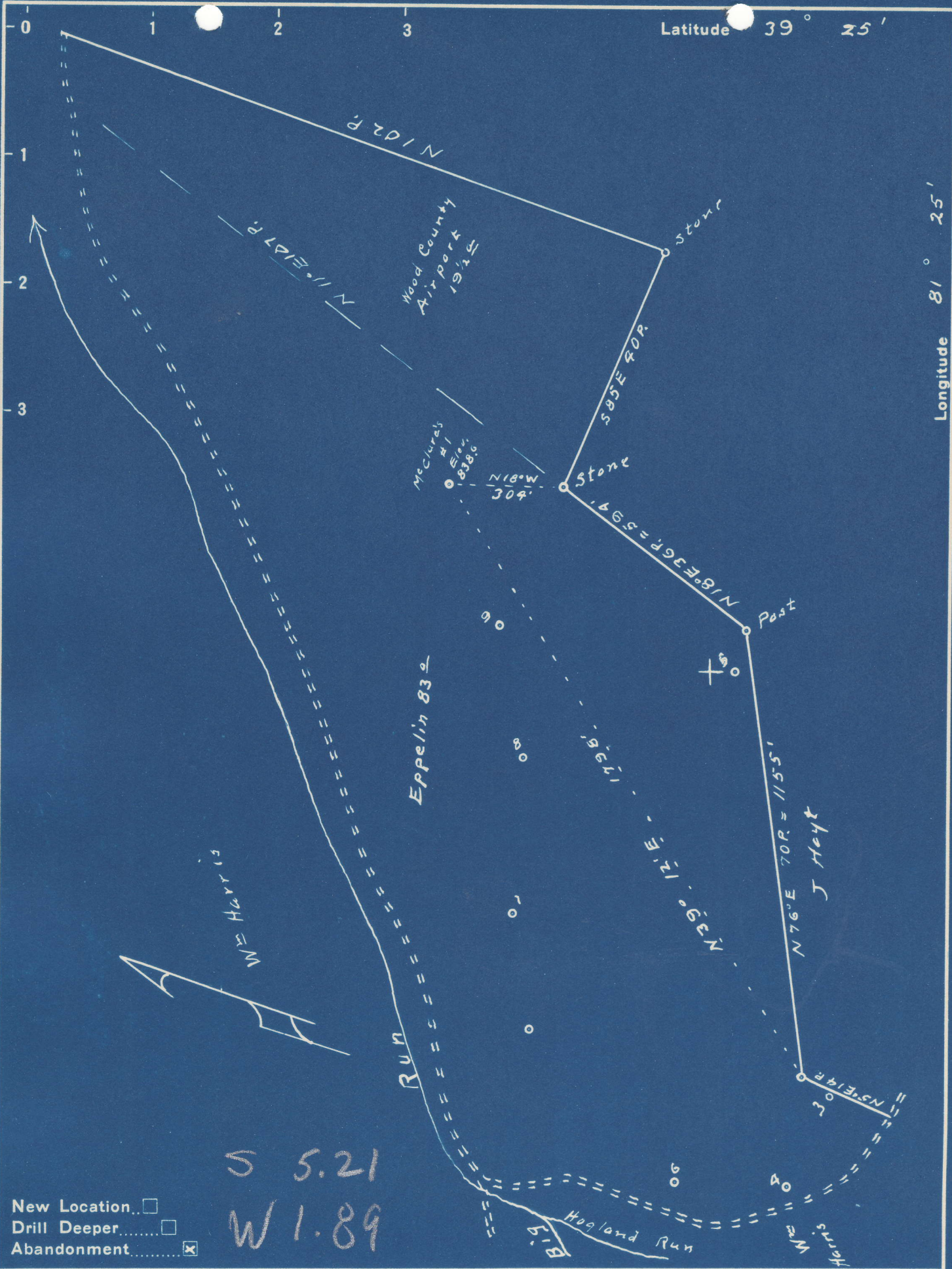


Latitude 39° 25'

Longitude 81° 25'



5 5.21
W 1.89

New Location
 Drill Deeper
 Abandonment

Company W. I. Gettman
 Address 812 Columbia Ave. Williamsstown, W. Va.
 Farm John W. Eppelin
 Tract _____ Acres 83 Lease No. _____
 Well (Farm) No. McClure's #1 Serial No. _____
 Elevation (Spirit Level) 838.6
 Quadrangle Marietta
 County Wood District Williams
 Engineer Robert R. Anderson
by O. Meradith
 Engineer's Registration No. 296
 File No. _____ Drawing No. _____
 Date Mar. 21 50 Scale 1 in = 20 Poles

STATE OF WEST VIRGINIA
 DEPARTMENT OF MINES
 OIL AND GAS DIVISION
 CHARLESTON

WELL LOCATION MAP
 FILE NO. W00-358-A

+ Denotes location of well on United States Topographic Maps, scale 1 to 62,500, latitude and longitude lines being represented by border lines as shown.
 - Denotes one inch spaces on border line of original tracing.