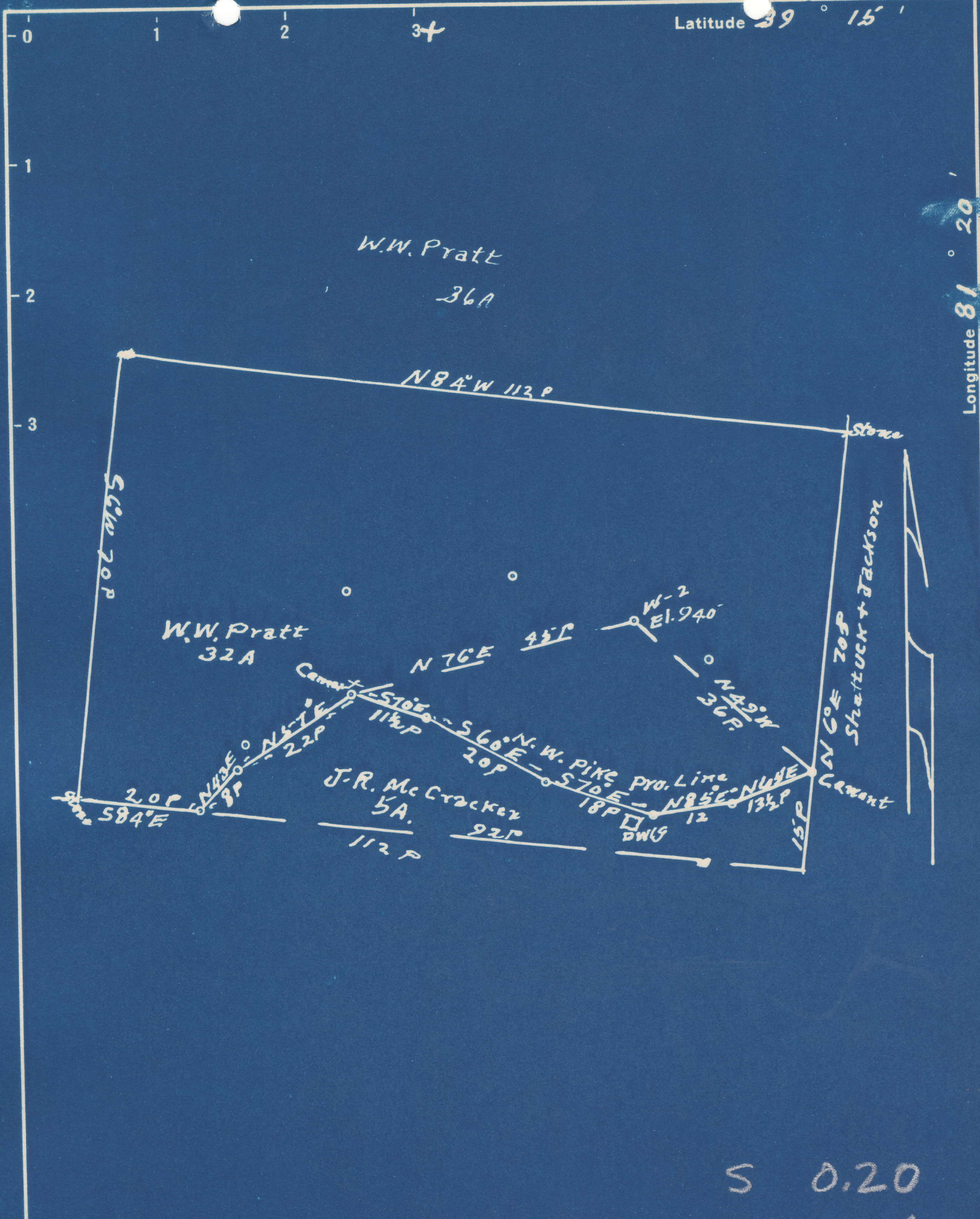


Latitude 39° 15'

Longitude 81° 20'



S 0.20
W 4.24

New Location...
 Drill Deeper...
 Abandonment...

Company Schroeder Bros Oil & Gas Properties
 Address PARKERSBURG, W.Va.
 Farm W.W. PRATT
 Tract 1 Acres 32 Lease No. _____
 Well (Farm) No. 2 Serial No. _____
 Elevation (Spirit Level) 940'
 Quadrangle ELIZABETH
 County WOOD District UNION
 Engineer Robert R. Anderson
 By J.E. Anderson
 Engineer's Registration No. 296
 File No. _____ Drawing No. _____
 Date 9-27-60 Scale 1 in = 20 P

STATE OF WEST VIRGINIA
 DEPARTMENT OF MINES
 OIL AND GAS DIVISION
 CHARLESTON

WELL LOCATION MAP
 FILE NO. W00-374-A

+ Denotes location of well on United States Topographic Maps, scale 1 to 62,500, latitude and longitude lines being represented by border lines as shown.
 - Denotes one inch spaces on border line of original tracing.