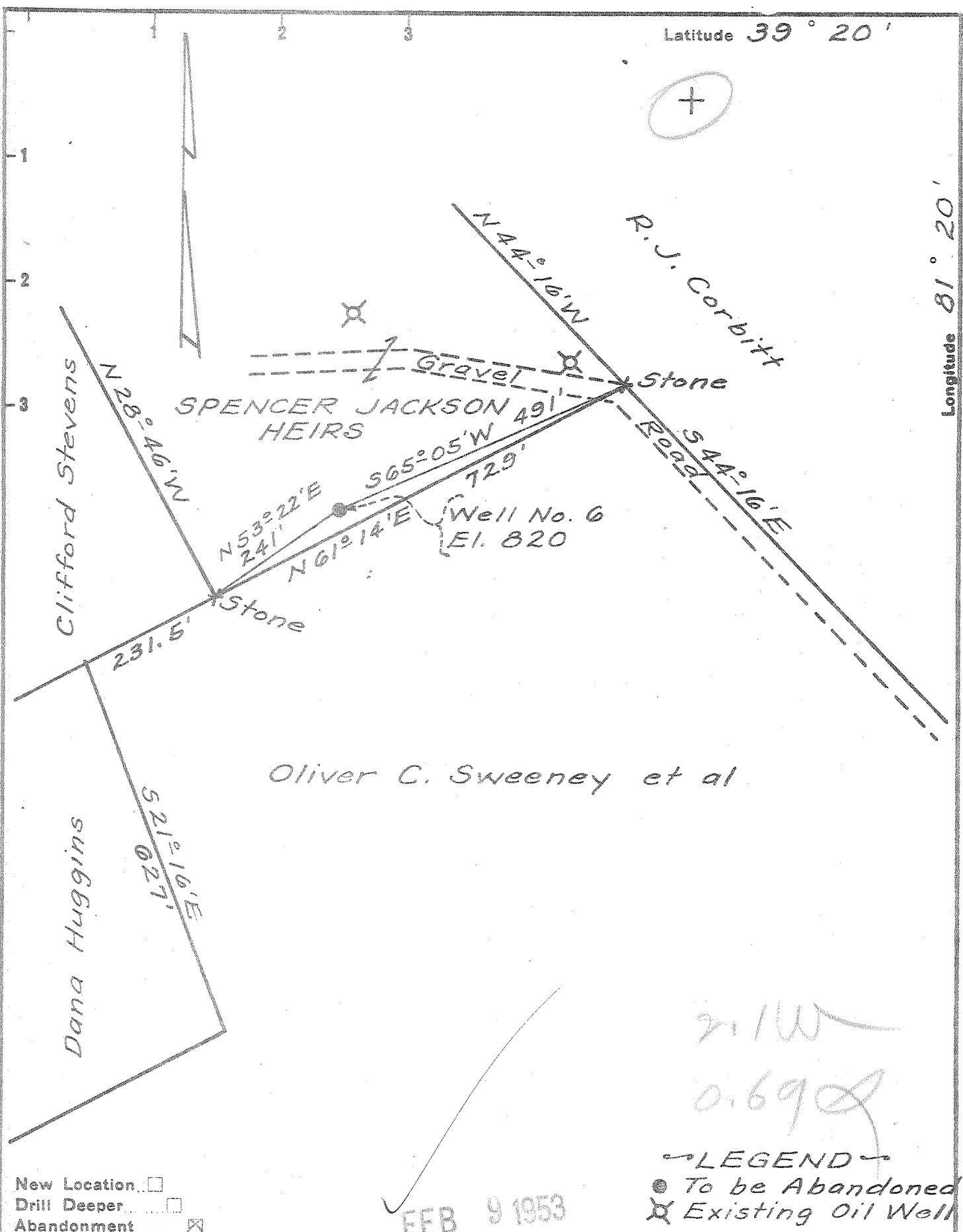


Latitude 39° 20'

Longitude 81° 20'



21.1W
0.692

LEGEND

- To be Abandoned
- ⊗ Existing Oil Well

- New Location
- Drill Deeper
- Abandonment

FEB 9 1953

Company D. C. DAVIS
 Address MARIETTA, OHIO
 Farm SPENCER JACKSON HEIRS
 Tract _____ Acres _____ Lease No. _____
 Well (Farm) No. 6 Serial No. _____
 Elevation (Spirit Level) 820
 Quadrangle MARIETTA
 County WOOD District UNION
 Engineer John V. Laflin
 Engineer's Registration No. 2197 (OHIO)
 File No. _____ Drawing No. 4
 Date 1-3-53 Scale 1" = 200'

STATE OF WEST VIRGINIA
 DEPARTMENT OF MINES
 OIL AND GAS DIVISION
 CHARLESTON

WELL LOCATION MAP
 FILE NO. W00-546-A

+ Denotes location of well on United States Topographic Maps, scale 1 to 62,500, latitude and longitude lines being represented by border lines as shown.

- Denotes one inch spaces on border line of original tracing.