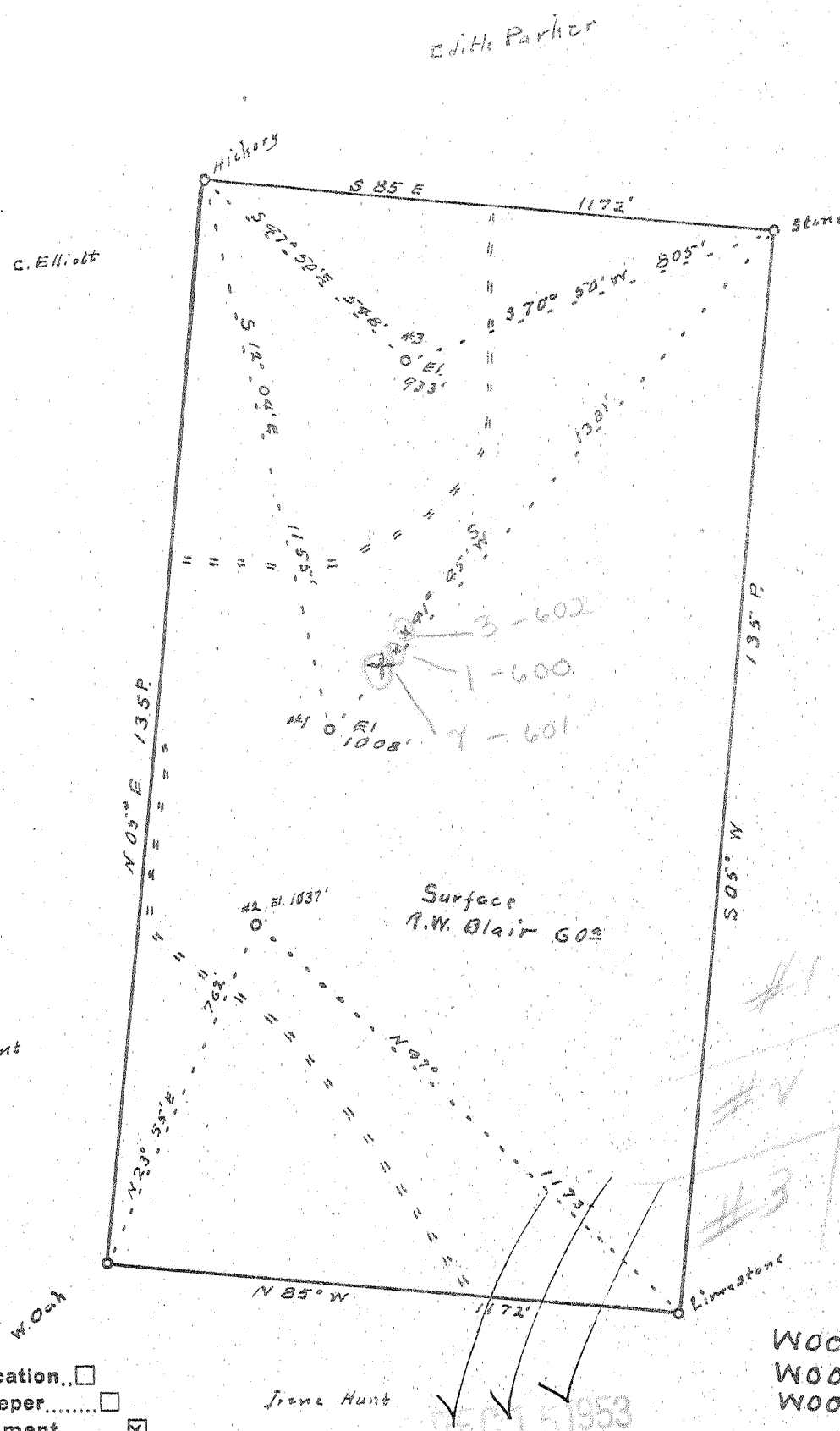


39° 20'

Longitude 81° 20'

-1  
-2  
-3



New Location..   
 Drill Deeper.....   
 Abandonment.....

W00-600-A-#1  
 W00-601-A-#2  
 W00-602-A-#3

Company Pierson, Smith, Feick & Kirkbride  
 Address 132, Walker W Va  
 Farm R.W. Blair (Patrick O'Brien)  
 Tract \_\_\_\_\_ Acres 60 Lease No. \_\_\_\_\_  
 Well (Farm) No. 2, 1, 3 Serial No. \_\_\_\_\_  
 Elevation (Spirit Level) 2,1022'(1,1008')(3, 933'  
 Quadrangle Marietta  
 County Wood District Union  
 Engineer Robert K. Anderson  
 Engineer's Registration No. 296  
 File No. \_\_\_\_\_ Drawing No. \_\_\_\_\_  
 Date 11/1 53 Scale 1/311 = 20 Feet

STATE OF WEST VIRGINIA  
 DEPARTMENT OF MINES  
 OIL AND GAS DIVISION  
 CHARLESTON

**WELL LOCATION MAP**

FILE NO. See Above

+ Denotes location of well on United States Topographic Maps, scale 1 to 62,500, latitude and longitude lines being represented by border lines as shown.

- Denotes one inch spaces on border line of original tracing.

BLAIR (PATRICK O'BRIEN) TRS. 1, 2, & 3 - PIERSON, SMITH, FEICK & KIRKBRIDE - W00-600-A-#1 to 602-A-#3