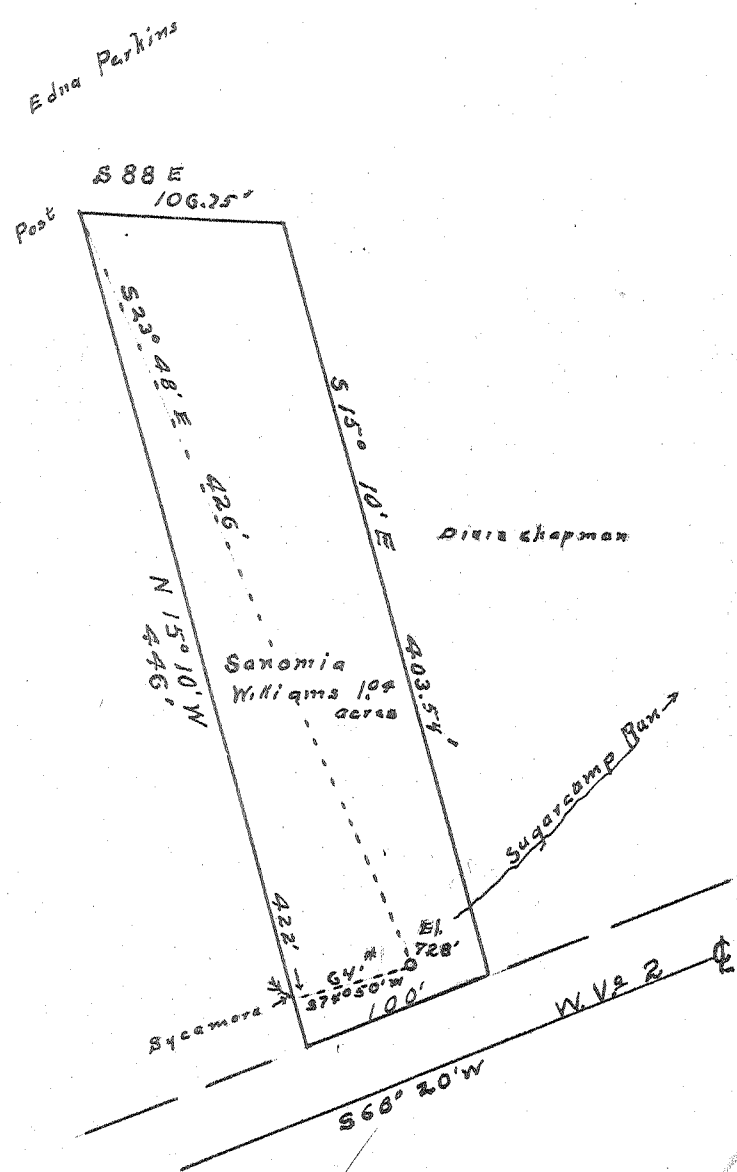


Latitude 39° 25'

Longitude 81° 26'



New Location...   
 Drill Deeper.....   
 Abandonment.....

APR 4 1955

0.04 W  
 5.55 W

Company Sanomia Williams  
 Address 504 Lubeck Ave Parkersburg, WV  
 Farm Part of Lot 10 Port View Farms  
 owned by Sanomia Williams  
 Tract \_\_\_\_\_ Acres 1 Lease No. \_\_\_\_\_  
 Well (Farm) No. 3 Serial No. \_\_\_\_\_  
 Elevation (Spirit Level) 728'  
 Quadrangle Marietta  
 County Wood District Union  
 Engineer Robert R. Anderson  
 by O. Meredith  
 Engineer's Registration No. 296  
 File No. \_\_\_\_\_ Drawing No. \_\_\_\_\_  
 Date 3/22 55 Scale 100' = 1 inch

STATE OF WEST VIRGINIA  
 DEPARTMENT OF MINES  
 OIL AND GAS DIVISION  
 CHARLESTON

WELL LOCATION MAP  
 FILE NO. W00-636-A

+ Denotes location of well on United States Topographic Maps, scale 1 to 62,500, latitude and longitude lines being represented by border lines as shown.

- Denotes one inch spaces on border line of original tracing.

SANOMIA WILLIAMS No. 3 - SANOMIA WILLIAMS - W00-636-A