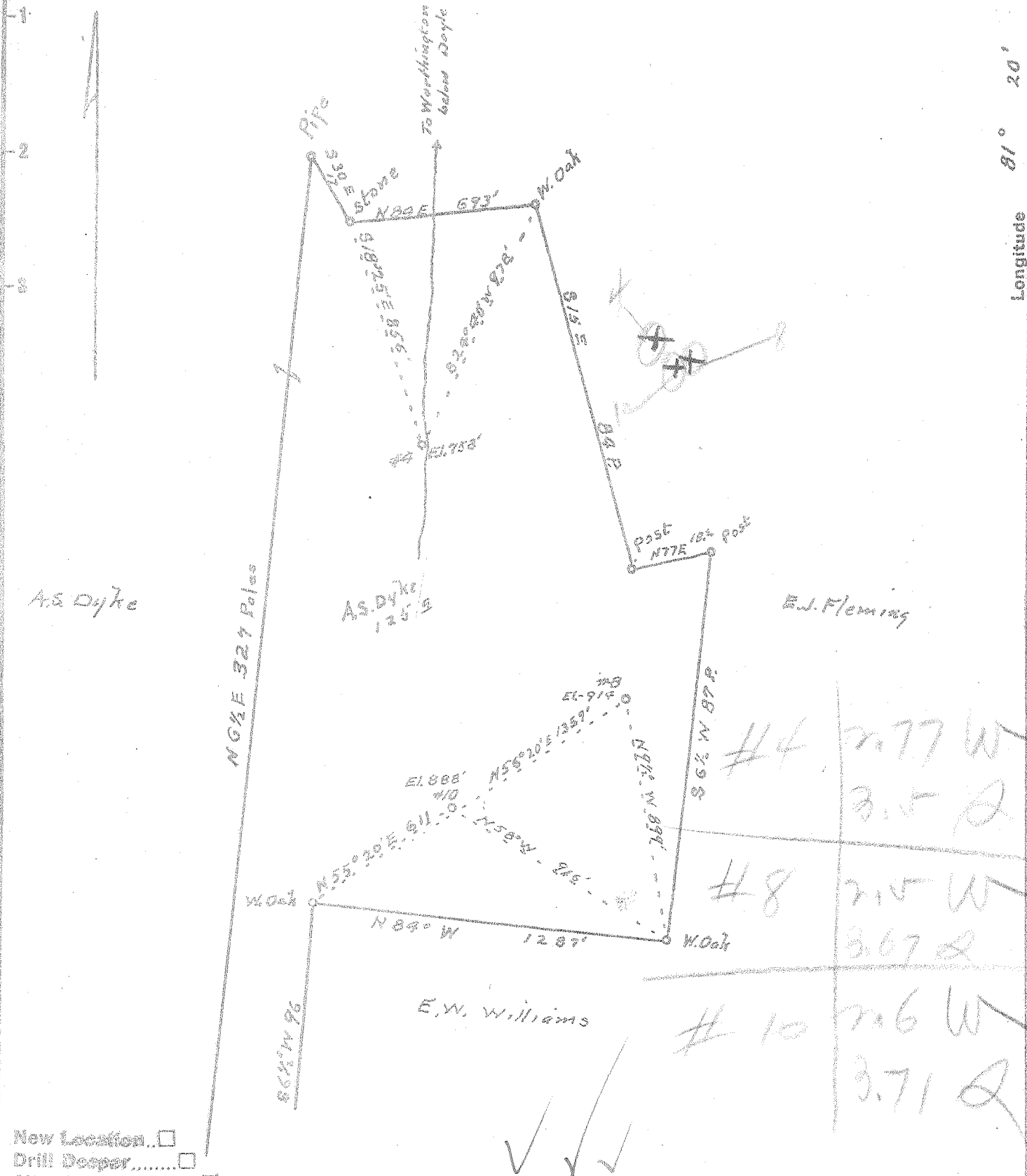


Latitude 7° 20'

Longitude 81° 20'



New Location   
 Drill Deeper   
 Abandonment

AUG 30 1955

Company Piersol and Feick  
 Address RR2, Walker, W.Va.  
 Farm AS. Dyke  
 Tract \_\_\_\_\_ Acres 12.5 Lease No. \_\_\_\_\_  
 Well (Farm) No. 8-10 Serial No. \_\_\_\_\_  
 Elevation (Spirit Level) 758' 919' 880'  
 Quadrangle Marietta  
 County Wood District Union  
 Engineer Robert R Anderson  
 by O. Meredith  
 Engineer's Registration No. 296  
 File No. \_\_\_\_\_ Drawing No. \_\_\_\_\_  
 Date Aug 3 Scale 1/4" = 30 Feet

STATE OF WEST VIRGINIA  
 DEPARTMENT OF MINES  
 OIL AND GAS DIVISION  
 CHARLESTON

WELL LOCATION MAP  
 FILE NO. W00-640-A-#8

+ Denotes location of well on United States Topographic Maps, scale 1 to 62,500, latitude and longitude lines being represented by border lines as shown.

- Denotes one inch spaces on border line of original tracing.

A. S. DYKE No. 8 - PIER SOL & FEICK - W00-640-A



STATE OF WEST VIRGINIA  
DEPARTMENT OF MINES  
OIL AND GAS DIVISION

201

Quadrangle \_\_\_\_\_

Permit No. 640-7

WELL RECORD

Oil or Gas Well \_\_\_\_\_ (KIND)

Company Piersol, A. Feick  
Address walker, rt, 2 W.VA  
Farm A.S. Dyke Acres 125  
Location (waters) Northampton & k  
Well No. 8 Elev. 914'  
District UNION County WOOD  
The surface of tract is owned in fee by Basil Tate et al  
Parkersburg Address W.VA  
Mineral rights are owned by C.R. Piersol & C.T. Feick  
walker, rt, 2 W.VA Address W.VA

Casing and Tubing	Used in Drilling	Left in Well	Packers
Size			Kind of Packer
16			
13			
10	350'	none	Size of
8 1/4	1200'	none	
6 1/2	2100'	2100'	Depth set
5 3/16			
3			Perf. top
2	2300'	2300'	Perf. bottom
Liners Used			Perf. top
			Perf. bottom

Drilling commenced about 1905  
Drilling completed about same  
Date Shot \_\_\_\_\_ From \_\_\_\_\_ To \_\_\_\_\_  
With \_\_\_\_\_

Open Flow \_\_\_\_\_ /10ths Water in \_\_\_\_\_ Inch  
\_\_\_\_\_ /10ths Merc. in \_\_\_\_\_ Inch  
Volume \_\_\_\_\_ Cu. Ft.  
Rock Pressure \_\_\_\_\_ lbs. \_\_\_\_\_ hrs.  
Oil \_\_\_\_\_ bbls., 1st 24 hrs.  
Fresh water \_\_\_\_\_ feet \_\_\_\_\_ feet  
Salt water \_\_\_\_\_ feet \_\_\_\_\_ feet

CASING CEMENTED \_\_\_\_\_ SIZE \_\_\_\_\_ No. Ft. \_\_\_\_\_ Date \_\_\_\_\_

COAL WAS ENCOUNTERED AT \_\_\_\_\_ FEET \_\_\_\_\_ INCHES  
\_\_\_\_\_ FEET \_\_\_\_\_ INCHES \_\_\_\_\_ FEET \_\_\_\_\_ INCHES  
\_\_\_\_\_ FEET \_\_\_\_\_ INCHES \_\_\_\_\_ FEET \_\_\_\_\_ INCHES

Formation	Color	Hard or Soft	Top	Bottom	Oil, Gas or Water	Depth Found	Remarks
Clay & red rock			000	700'			
red cave			700'	800'			
slate & shale			800'	1100'			
cow run sand			1100'	1125'			
lime & slate			1125'	1750'			
Injun sand			1750'	1800'			
slate & lime			1800'	2290'			
oil sand			2290'	2300'			
Total depth			2300'				



OCT 6 1955

