

Latitude 39° 25'

Longitude 81° 25'

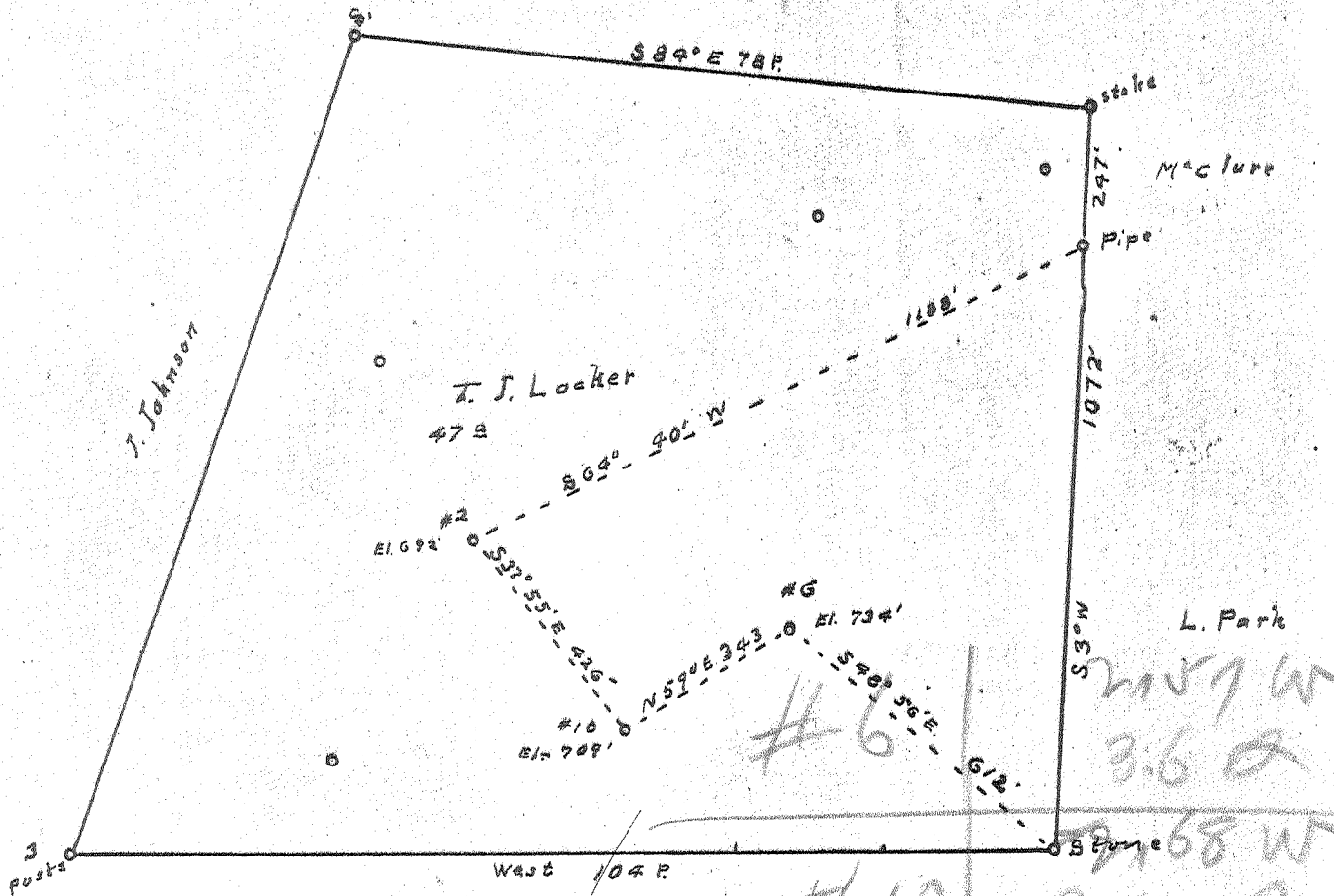
O.B. Rowell

J. Johnson

T. J. Locker  
47 A

MacLure

L. Park



New Location...   
 Drill Deeper.....   
 Abandonment.....

AUG. 6 1956

Company C.E. Beardmore  
 Address 1003 Glendale Road, Marietta, Ohio  
 Farm T. J. Locker  
 Tract \_\_\_\_\_ Acres 47 Lease No. \_\_\_\_\_  
 Well (Farm) No. 2, 10, 6 Serial No. \_\_\_\_\_  
 Elevation (Spirit Level) (2-692) (10-709) (#6 - 734)  
 Quadrangle Elizabeth MARLETTEA  
 County Wood District Williams  
 Engineer Robert R. Anderson  
 Engineer's Registration No. 296  
 File No. \_\_\_\_\_ Drawing No. \_\_\_\_\_  
 Date July 5 56 Scale 1 in = 20 Poles

STATE OF WEST VIRGINIA  
 DEPARTMENT OF MINES  
 OIL AND GAS DIVISION  
 CHARLESTON

WELL LOCATION MAP

FILE NO. W00-651-A-#10  
W00-652-A-#2

+ Denotes location of well on United States Topographic Maps, scale 1 to 62,500, latitude and longitude lines being represented by border lines as shown.

- Denotes one inch spaces on border line of original tracing.

T. J. LOCKER A65.10 & 2 - C.E. BEARDMORE - W00-651-2-A



STATE OF WEST VIRGINIA  
DEPARTMENT OF MINES  
OIL AND GAS DIVISION

309

WELL RECORD

Permit No. 534

Oil or Gas Well Oil  
(KIND)

Company C. E. Beardmore  
Address 1003 Glendale Rd., Marietta, Ohio  
Farm T. J. Locker Acres 47  
Location (waters) Big Run  
Well No. 2 Elev. 692'  
District Williams County Wood  
The surface of tract is owned in fee by T. J. Locker  
Address Parkersburg, W. Va  
Mineral rights are owned by Same  
Address \_\_\_\_\_

Casing and Tubing	Used in Drilling	Left in Well	Packers
Size			Kind of Packer
16			
13			Size of
10			
8 1/4			Depth set
<del>8 1/4</del> 6 1/2	880	820	
5 3/16			Perf. top
3			Perf. bottom
2	1115	1115	Perf. top
Liners Used			Perf. bottom

Drilling commenced No record  
Drilling completed \_\_\_\_\_  
Date Shot \_\_\_\_\_ From \_\_\_\_\_ To \_\_\_\_\_  
With \_\_\_\_\_  
Open Flow \_\_\_\_\_ /10ths Water in \_\_\_\_\_ Inch  
\_\_\_\_\_ /10ths Merc. in \_\_\_\_\_ Inch  
Volume \_\_\_\_\_ Cu. Ft.  
Rock Pressure \_\_\_\_\_ lbs. \_\_\_\_\_ hrs.  
Oil \_\_\_\_\_ bbls., 1st 24 hrs.  
Fresh water \_\_\_\_\_ feet \_\_\_\_\_ feet  
Salt water \_\_\_\_\_ feet \_\_\_\_\_ feet

CASING CEMENTED \_\_\_\_\_ SIZE \_\_\_\_\_ No. Ft. \_\_\_\_\_ Date \_\_\_\_\_  
COAL WAS ENCOUNTERED AT \_\_\_\_\_ FEET \_\_\_\_\_ INCHES  
\_\_\_\_\_ FEET \_\_\_\_\_ INCHES FEET \_\_\_\_\_ INCHES  
\_\_\_\_\_ FEET \_\_\_\_\_ INCHES FEET \_\_\_\_\_ INCHES

Formation	Color	Hard or Soft	Top	Bottom	Oil, Gas or Water	Depth Found	Remarks
Salt Sand			1085	1120			

