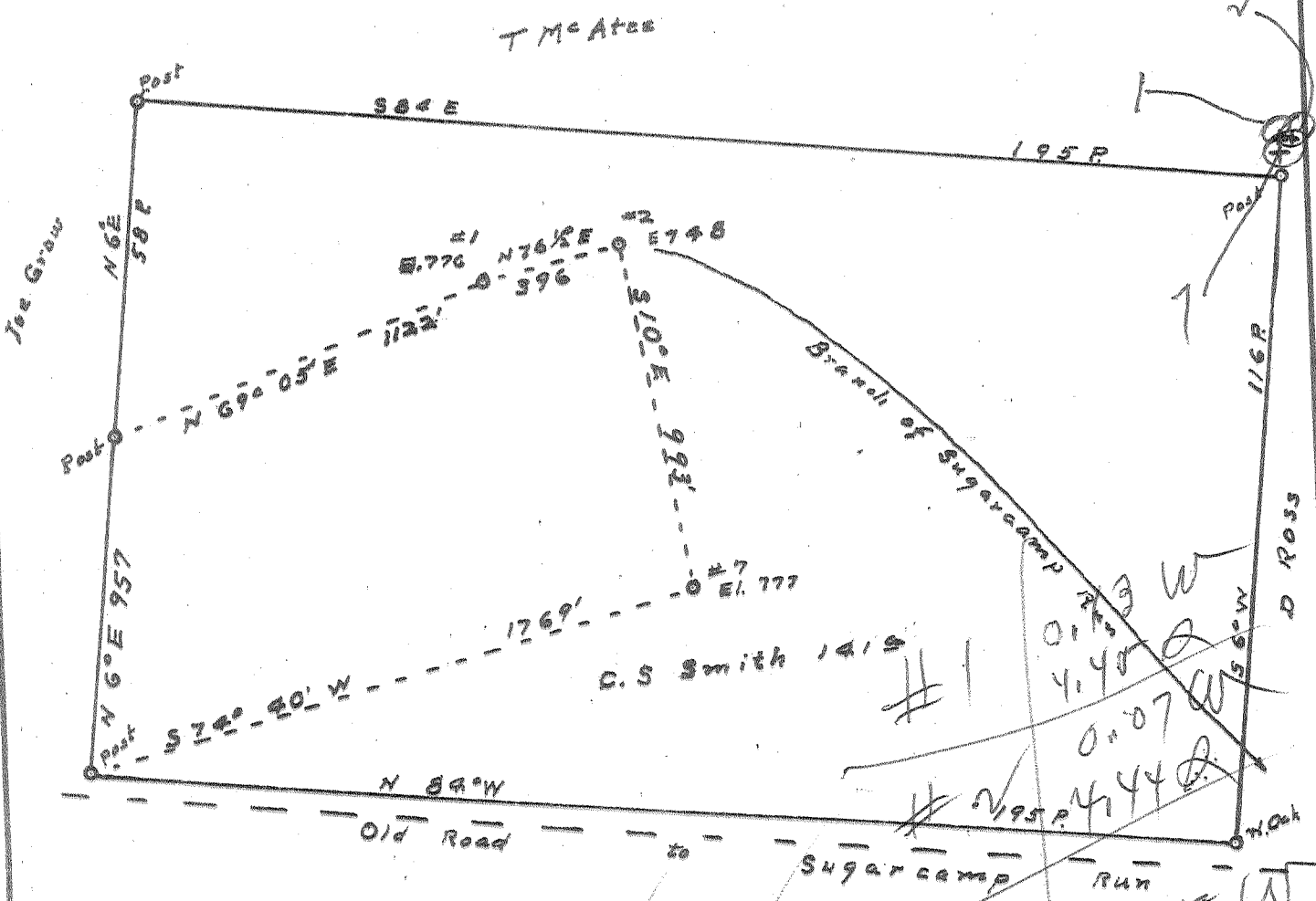


Latitude 39° 25'

Longitude 81° 25'



New Location...   
 Drill Deeper.....   
 Abandonment.....

NOV 16 1959

Company Feick, Patterson & Feick  
 Address RR2 Walker, W.Va.  
 Farm C.S. Smith  
 Tract \_\_\_\_\_ Acres 1.51 Lease No. \_\_\_\_\_  
 Well (Farm) No. 7 241 Serial No. \_\_\_\_\_  
 Elevation (Spirit Level) 777 748 776  
 Quadrangle Marquette Ohio, W.Va.  
 County Wood District Williams  
 Engineer Robert R. Anderson  
 Engineer's Registration No. 296  
 File No. \_\_\_\_\_ Drawing No. \_\_\_\_\_  
 Date Oct 27, 1958 Scale 1 in = 30 Feet

STATE OF WEST VIRGINIA  
 DEPARTMENT OF MINES  
 OIL AND GAS DIVISION  
 CHARLESTON

### WELL LOCATION MAP

FILE NO. Woo-696-A-#1  
Woo-697-A-#2  
Woo-699-A-#?

+ Denotes location of well on United States Topographic Maps, scale 1 to 62,500, latitude and longitude lines being represented by border lines as shown.

- Denotes one inch spaces on border line of original tracing.

C.S. SMITH NO. 1, 2, & 7 - FEICK, PATTERSON & FEICK - WOO-696-697-699



372

STATE OF WEST VIRGINIA  
DEPARTMENT OF MINES  
OIL AND GAS DIVISION

Plot  
696-4

Quadrangle

Permit No. W-00-699-A

WELL RECORD

Oil or Gas Well oil  
(KIND)

Company Feick-Patterson & Feick  
 Address Rt. 2, Walker, W. Va.  
 Farm C. S. Smith Acres 141  
 Location (waters) Branch Sugar Camp Run  
 Well No. 7 Elev. 777  
 District Williams County Wood  
 The surface of tract is owned in fee by McAtee Heirs  
 Address \_\_\_\_\_  
 Mineral rights are owned by \_\_\_\_\_  
 Address \_\_\_\_\_  
 Drilling commenced \_\_\_\_\_  
 Drilling completed \_\_\_\_\_  
 Date Shot \_\_\_\_\_ From 1223 To 1235  
 With 30 qts. Glycerin  
 Open Flow \_\_\_\_\_ /10ths Water in \_\_\_\_\_ Inch  
 \_\_\_\_\_ /10ths Merc. in \_\_\_\_\_ Inch  
 Volume \_\_\_\_\_ Cu. Ft.  
 Rock Pressure \_\_\_\_\_ lbs. \_\_\_\_\_ hrs.  
 Oil \_\_\_\_\_ bbls., 1st 24 hrs.  
 WELL ACIDIZED \_\_\_\_\_  
 WELL FRACTURED \_\_\_\_\_

Casing and Tubing	Used in Drilling	Left in Well	Packers
Size			
16			Kind of Packer
13			
10			Size of
8 1/2			
7 1/8 ← 750'	1202	1202	Depth set
5 3/16			
3			Perf. top
2			Perf. bottom
Liners Used			Perf. top
			Perf. bottom

CASING CEMENTED \_\_\_\_\_ SIZE \_\_\_\_\_ No. Ft. \_\_\_\_\_ Date \_\_\_\_\_

COAL WAS ENCOUNTERED AT \_\_\_\_\_ FEET \_\_\_\_\_ INCHES  
 \_\_\_\_\_ FEET \_\_\_\_\_ INCHES FEET \_\_\_\_\_ INCHES  
 \_\_\_\_\_ FEET \_\_\_\_\_ INCHES FEET \_\_\_\_\_ INCHES

RESULT AFTER TREATMENT \_\_\_\_\_  
 ROCK PRESSURE AFTER TREATMENT \_\_\_\_\_  
 Fresh Water \_\_\_\_\_ Feet Salt Water \_\_\_\_\_ Feet

Formation	Color	Hard or Soft	Top	Bottom	Oil, Gas or Water	Depth	Remarks
Salt Sand	White	Sugar	1226	1235	oil		

