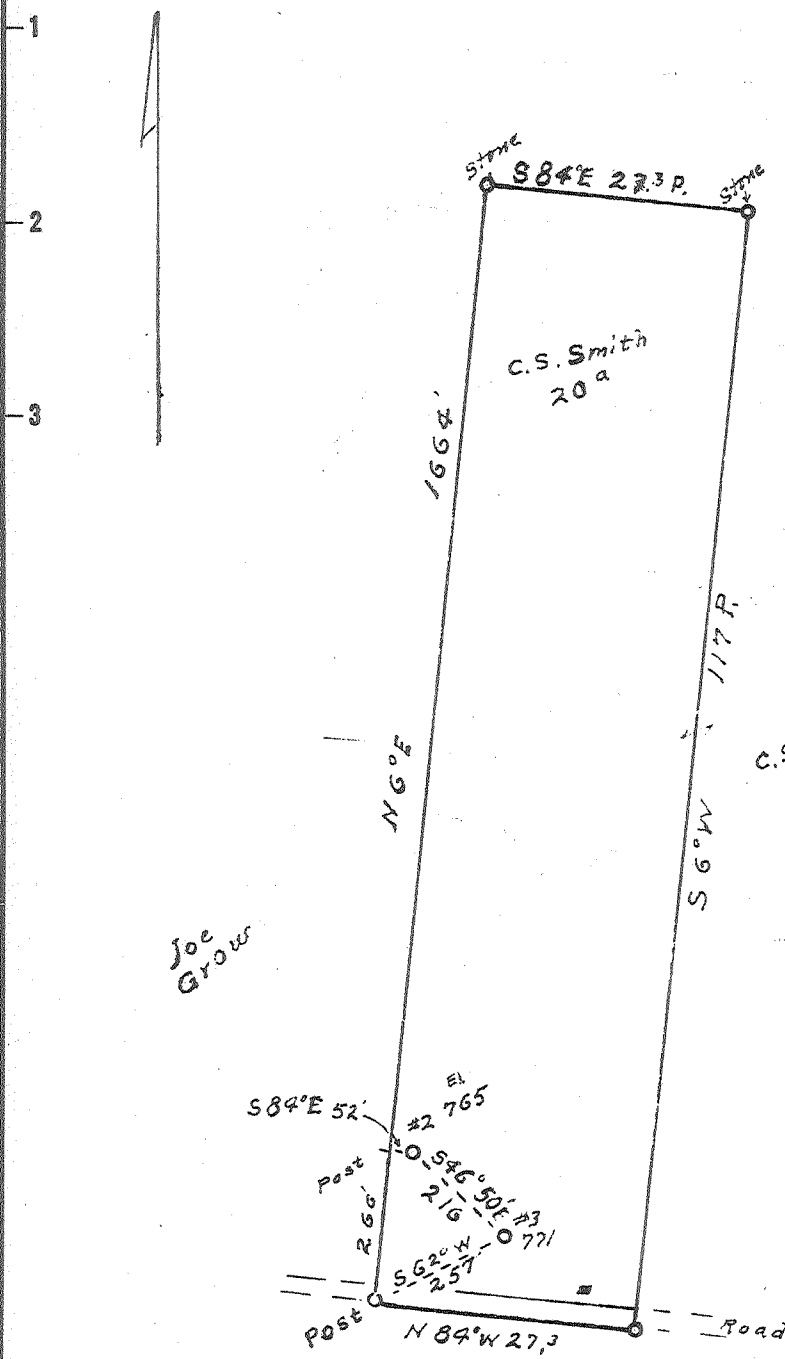


Latitude 39° 25'

Longitude 81° 25'



C.S. Smith 702

New Location ..   
 Drill Deeper .....   
 Abandonment .....

✓✓  
 JUL 19 1958

#2  
 0.46 W  
 4.56  
 #3  
 0.46 W  
 7.57

Company Feick, Patterson & Feick  
 Address RR2, Walker  
 Farm C.S. Smith  
 Tract 20a Acres 20 & 70' Lease No. \_\_\_\_\_  
 Well (Farm) No. 2 & 3 Serial No. \_\_\_\_\_  
 Elevation (Spirit Level) 765 771  
 Quadrangle Marietta Ohio, W Va  
 County Wood District Williams  
 Engineer Robert R. Anderson  
by Omeredith  
 Engineer's Registration No. 296  
 File No. \_\_\_\_\_ Drawing No. \_\_\_\_\_  
 Date Oct 19th 58 Scale 20 feet to 1 in.

STATE OF WEST VIRGINIA  
 DEPARTMENT OF MINES  
 OIL AND GAS DIVISION  
 CHARLESTON

WELL LOCATION MAP

FILE NO. Woo-700-A #2  
Woo-701-A #3

+ Denotes location of well on United States Topographic Maps, scale 1 to 62,500, latitude and longitude lines being represented by border lines as shown.  
 - Denotes one inch spaces on border line of original tracing.

C.S. SMITH NOS. 2 & 3 - FEICK, PATTERSON & FEICK - WOO-700-701-A



369

STATE OF WEST VIRGINIA  
DEPARTMENT OF MINES  
OIL AND GAS DIVISION

Quadrangle Marietta

Permit No. 700-A

WELL RECORD

Oil or Gas Well \_\_\_\_\_  
(KIND)

Company Feick-Patterson & Feick  
 Address Rt. 2, Walker, W. Va.  
 Farm C. S. Smith Acres 20  
 Location (waters) \_\_\_\_\_  
 Well No. 2 Elev. 765  
 District Williams County Wood  
 The surface of tract is owned in fee by \_\_\_\_\_  
 Address \_\_\_\_\_  
 Mineral rights are owned by \_\_\_\_\_  
 Address \_\_\_\_\_  
 Drilling commenced \_\_\_\_\_  
 Drilling completed 1920  
 Date Shot \_\_\_\_\_ From \_\_\_\_\_ To \_\_\_\_\_  
 With \_\_\_\_\_  
 Open Flow /10ths Water in \_\_\_\_\_ Inch  
 /10ths Merc. in \_\_\_\_\_ Inch  
 Volume \_\_\_\_\_ Cu. Ft.  
 Rock Pressure \_\_\_\_\_ lbs. \_\_\_\_\_ hrs.  
 Oil \_\_\_\_\_ bbls., 1st 24 hrs.  
 WELL ACIDIZED \_\_\_\_\_  
 WELL FRACTURED \_\_\_\_\_

Casing and Tubing	Used in Drilling	Left in Well	Packers
Size			Kind of Packer
16			
13			Size of
10			Depth set
8 1/4	32	32	
6 5/8	800	800	
5 3/16	860	860	Perf. top
3			Perf. bottom
2			Perf. top
Liners Used			Perf. bottom

CASING CEMENTED \_\_\_\_\_ SIZE \_\_\_\_\_ No. Ft. \_\_\_\_\_ Date \_\_\_\_\_

COAL WAS ENCOUNTERED AT \_\_\_\_\_ FEET \_\_\_\_\_ INCHES  
 \_\_\_\_\_ FEET \_\_\_\_\_ INCHES \_\_\_\_\_ FEET \_\_\_\_\_ INCHES  
 \_\_\_\_\_ FEET \_\_\_\_\_ INCHES \_\_\_\_\_ FEET \_\_\_\_\_ INCHES

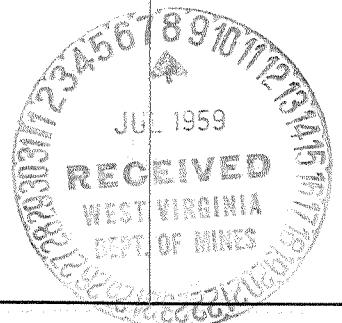
RESULT AFTER TREATMENT \_\_\_\_\_

ROCK PRESSURE AFTER TREATMENT \_\_\_\_\_

Fresh Water \_\_\_\_\_ Feet Salt Water \_\_\_\_\_ Feet

Formation	Color	Hard or Soft	Top	Bottom	Oil, Gas or Water	Depth	Remarks
Cow Run Sand	White	Sugar	820	870	Oil		

NOV 5 1959



(over)