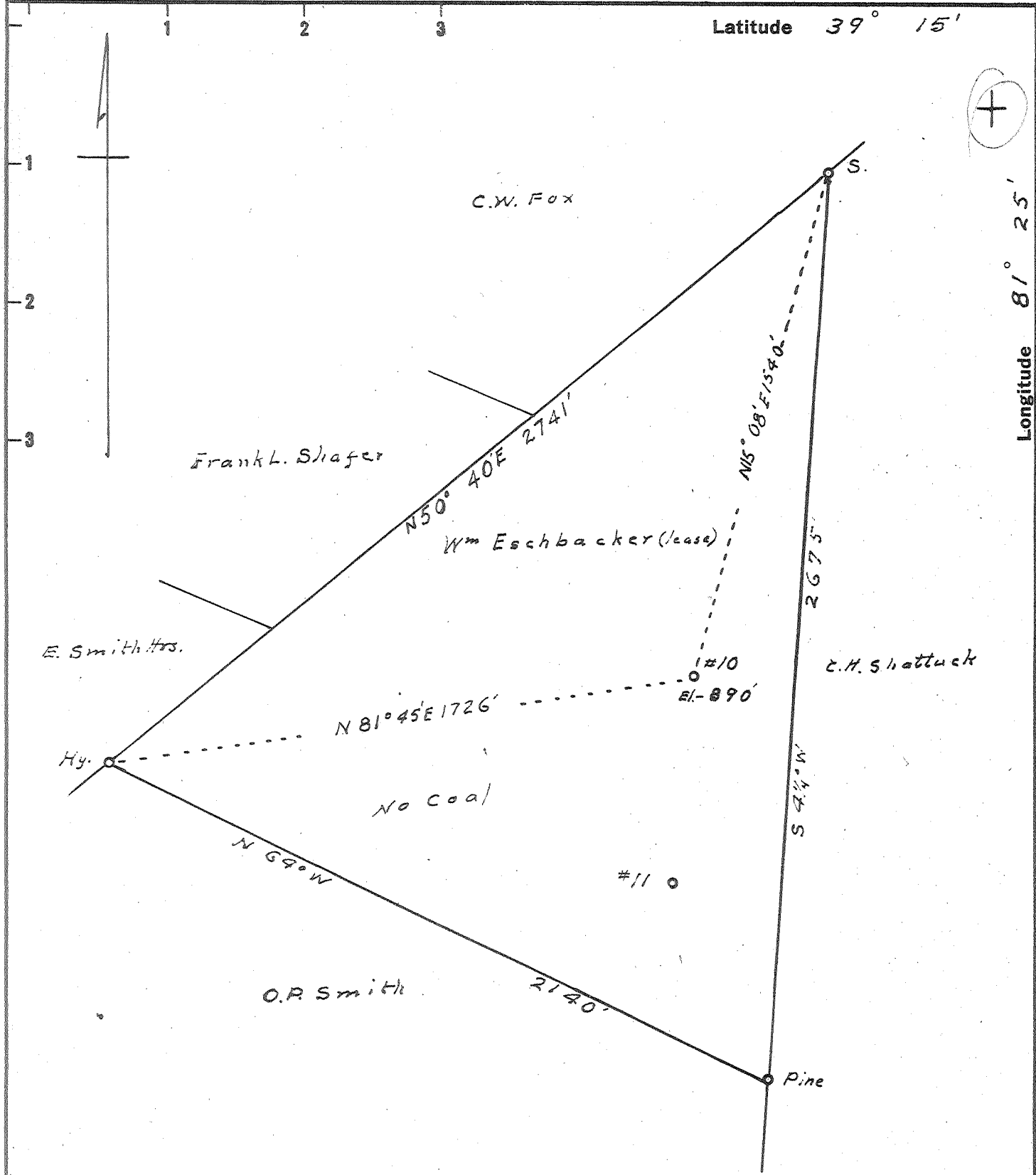


Latitude 39° 15'

Longitude 81° 25'



New Location   
 Drill Deeper   
 Abandonment

OCT 4 1960

0197 W  
 0178 Q

Company Clyde McPeck  
 Address 71 Davisville W.Va.  
 Farm Wm Eschbacher  
 Tract \_\_\_\_\_ Acres 60 Lease No. \_\_\_\_\_  
 Well (Farm) No. 10 Serial No. \_\_\_\_\_  
 Elevation (Spirit Level) 890'  
 Quadrangle Elizabeth  
 County Wood District Walker  
 Engineer Robert R. Anderson  
by O. Meredith  
 Engineer's Registration No. 296  
 File No. \_\_\_\_\_ Drawing No. \_\_\_\_\_  
 Date May 2 1960 Scale 1 in = 400 feet

STATE OF WEST VIRGINIA  
 DEPARTMENT OF MINES  
 OIL AND GAS DIVISION  
 CHARLESTON

WELL LOCATION MAP  
 FILE NO. W00-741-A

+ Denotes location of well on United States Topographic Maps, scale 1 to 62,500, latitude and longitude lines being represented by border lines as shown.  
 - Denotes one inch spaces on border line of original tracing.

WM. ESCHBACHER, No. 10 — CLAUDE McPECK — W00-741-A