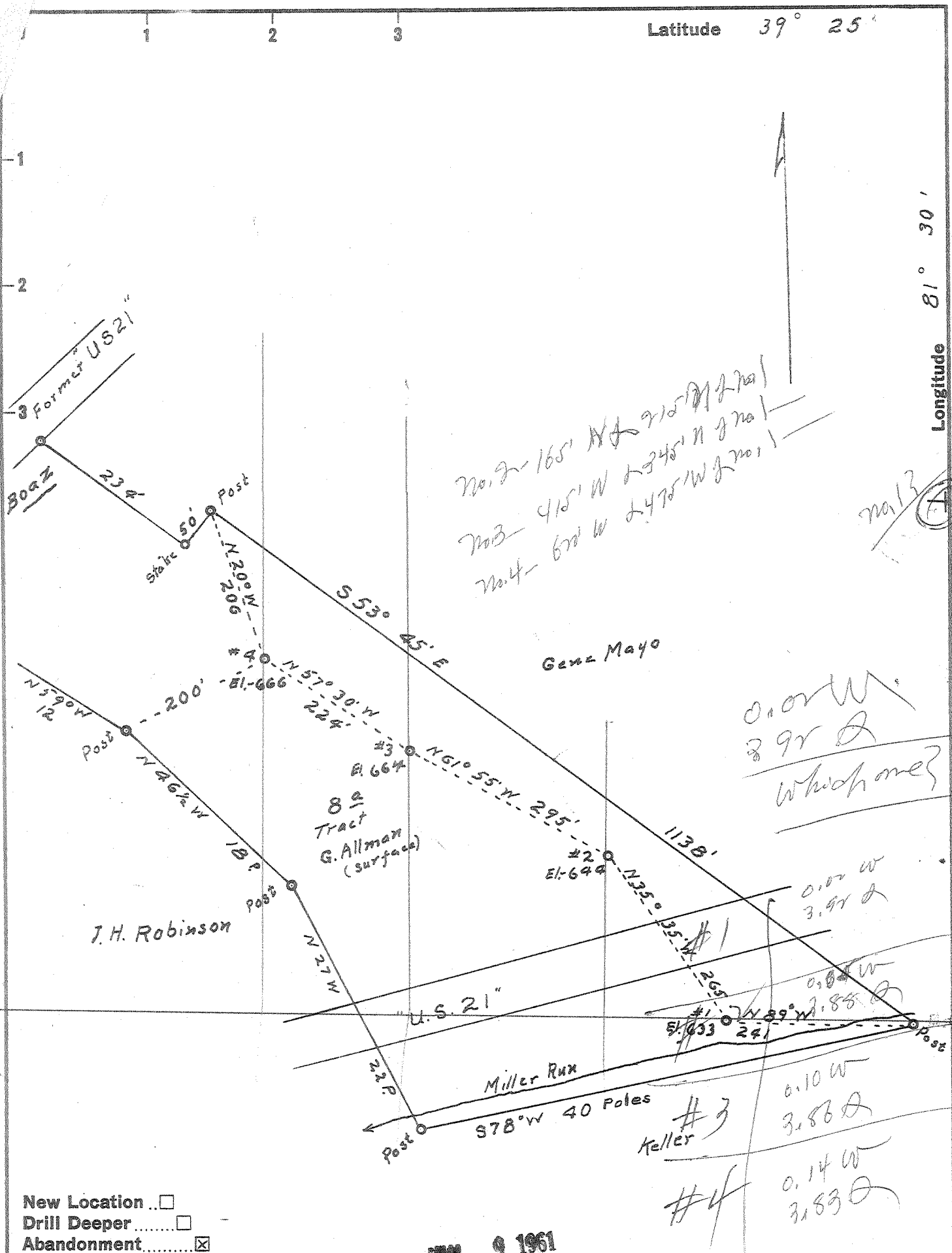


Latitude 39° 25'

Longitude 81° 30'



New Location   
 Drill Deeper   
 Abandonment

9 1961

Company C.E. Beardmore  
 Address 1003 Glendale Road, Marietta, O.  
 Farm O.H. Johnson (lease) G. Allman  
 Tract 8<sup>a</sup> Acres 85 Lease No. \_\_\_\_\_  
 Well (Farm) No. 1, 2, 3, 4 Serial No. \_\_\_\_\_  
 Elevation (Spirit Level) #1-633 #2-699 #3-664 #4-666  
 Quadrangle Parkersburg  
 County Wood District Williams  
 Engineer Robert R. Anderson  
 by O. Meredith  
 Engineer's Registration No. 296  
 File No. \_\_\_\_\_ Drawing No. \_\_\_\_\_  
 Date 6/19 59 Scale 1 in = 10 Poles

STATE OF WEST VIRGINIA  
 DEPARTMENT OF MINES  
 OIL AND GAS DIVISION  
 CHARLESTON

WELL LOCATION MAP

FILE NO. W00-711-A-#1 W00-743-A-#3  
W00-713-A-#2  
W00-742-A-#4

+ Denotes location of well on United States Topographic Maps, scale 1 to 62,500, latitude and longitude lines being represented by border lines as shown.

- Denotes one inch spaces on border line of original tracing.