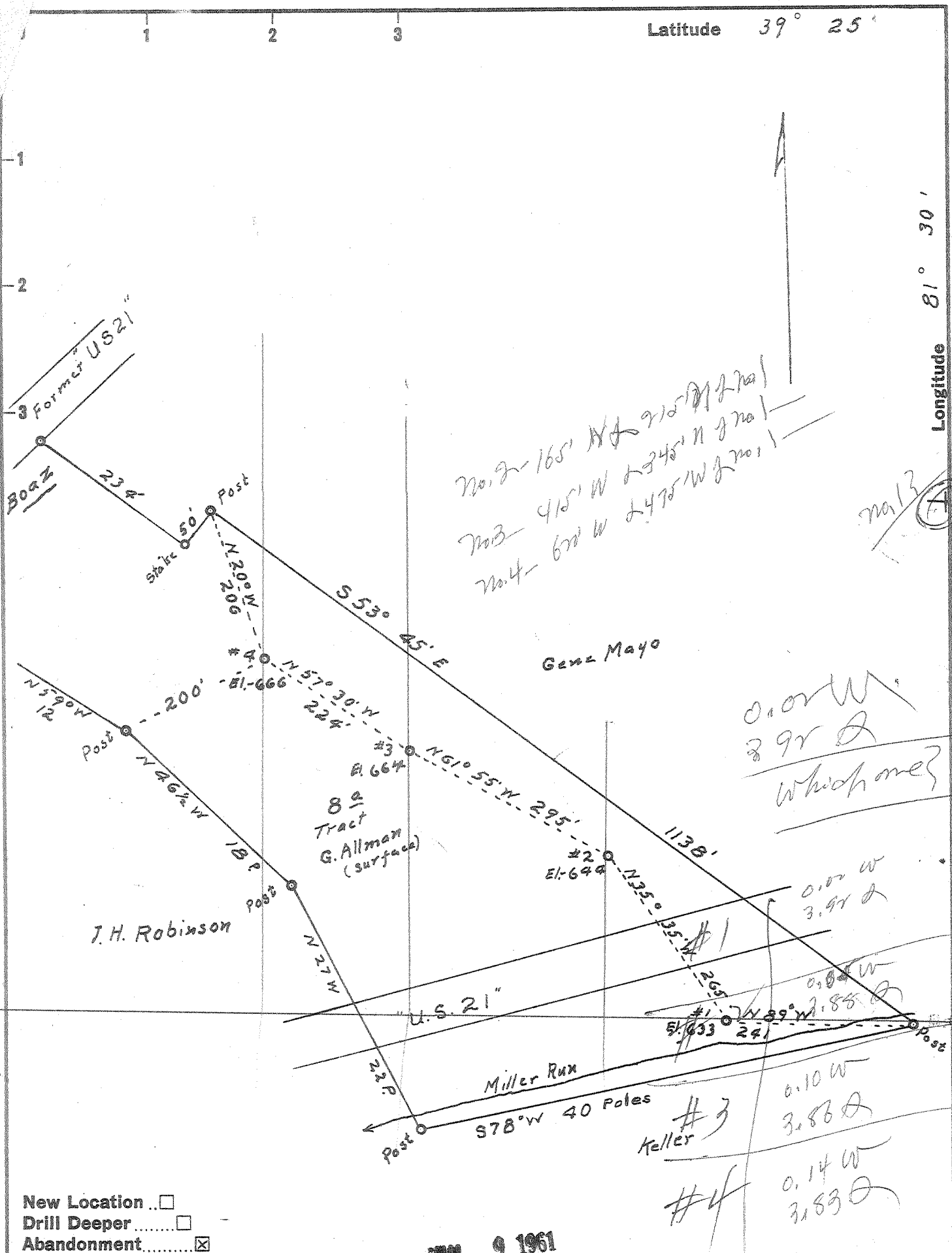


Latitude 39° 25'

Longitude 81° 30'



New Location
 Drill Deeper
 Abandonment

9 1961

Company C.E. Beardmore
 Address 1003 Glendale Road, Marietta, O.
 Farm O.H. Johnson (lease) G. Allman
 Tract 8± Acres 85 Lease No. _____
 Well (Farm) No. 1, 2, 3, 4 Serial No. _____
 Elevation (Spirit Level) #1-633, #2-699, #3-664, #4-665
 Quadrangle Parkersburg
 County Wood District Williams
 Engineer Robert R. Anderson
 by O. Meredith
 Engineer's Registration No. 296
 File No. _____ Drawing No. _____
 Date 6/19 59 Scale 1 in = 10 Poles

STATE OF WEST VIRGINIA
 DEPARTMENT OF MINES
 OIL AND GAS DIVISION
 CHARLESTON

WELL LOCATION MAP

FILE NO. W00-711-A-#1 W00-743-A
W00-713-A-#2
W00-742-A-#2
 #3

+ Denotes location of well on United States Topographic Maps, scale 1 to 62,500, latitude and longitude lines being represented by border lines as shown.

- Denotes one inch spaces on border line of original tracing.

156 IMPERIAL 64120
 G.E. BEARDMORE - W00-742 & 743-A