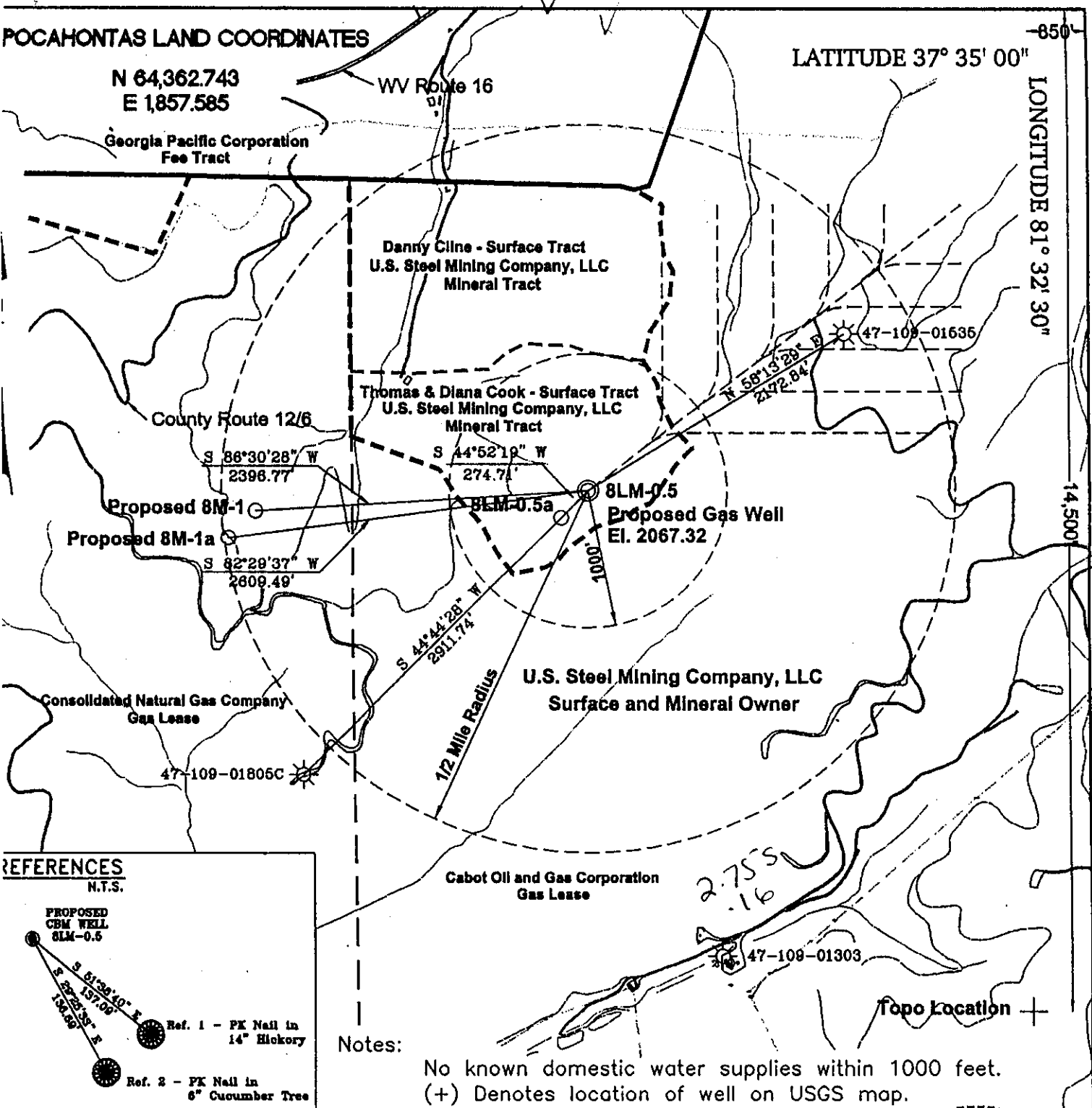


POCAHONTAS LAND COORDINATES

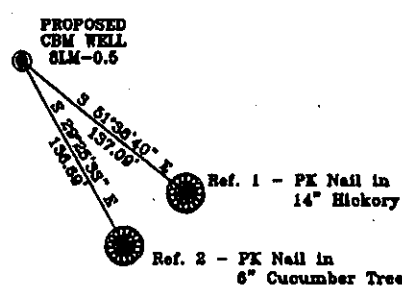
N 64,362.743
E 1,857.585

LATITUDE 37° 35' 00"

LONGITUDE 81° 32' 30"



REFERENCES
N.T.S.

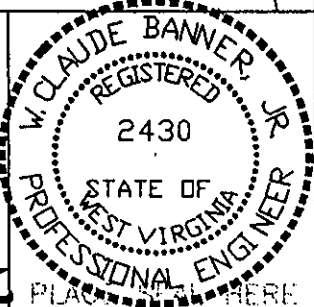


Notes:

No known domestic water supplies within 1000 feet.
(+) Denotes location of well on USGS map.

FILE No. CDX
DRAWING NAME \PLATS\8LM-05
Drawing Number 990909/LL
SCALE 1" = 1000'
MINIMUM DEGREE OF ACCURACY 1 : 2500
PROVEN SOURCE OF ELEVATION USGS B.M. F44
ELEV. 1565

I THE UNDERSIGNED, HEREBY CERTIFY THAT THIS PLAT IS CORRECT TO THE BEST OF MY KNOWLEDGE AND BELIEF AND SHOWS ALL THE INFORMATION REQUIRED BY LAW AND THE REGULATIONS ISSUED AND PRESCRIBED BY THE DEPARTMENT OF MINES.
(SIGNED) W. Claude Banner, Jr.
R.P.E. _____ R.P.S. 1065



STATE OF WEST VIRGINIA
DIVISION OF ENVIRONMENTAL PROTECTION
OFFICE OF OIL AND GAS
NITRO, WV

DATE September 13 19 99
OPERATOR'S WELL No. 8LM-0.5
API WELL No. 47 - 109 - 01848C
STATE COUNTY PERMIT

WELL TYPE: OIL GAS CBM LIQUID INJECTION WASTE DISPOSAL
(IF "GAS") PRODUCTION X STORAGE DEEP SHALLOW

LOCATION: ELEVATION 2067.32 WATER SHED BALDWIN BRANCH OF PINNACLE CREEK
DISTRICT CENTER COUNTY WYOMING
QUADRANGLE PINEVILLE, WV

SURFACE OWNER THOMAS AND DIANA COOK ACREAGE 50.00 Tax Map No. 128 Parcel No. 5
CBM ROYALTY OWNER U.S. STEEL MINING COMPANY, LLC LEASE ACREAGE _____
LEASE No. _____

PROPOSED WORK: DRILL X CONVERT DRILL DEEPER REDRILL FRACTURE OR STIMULATE PLUG OFF OLD FORMATION PERFORATE NEW FORMATION OTHER PHYSICAL CHANGE IN WELL (SPECIFY) _____

PLUG AND ABANDON CLEAN OUT AND REPLUG _____
TARGET FORMATION POCAHONTAS NO. 3 & PENN. COALS ESTIMATED DEPTH 1168'
WELL OPERATOR CDX GAS, LLC MANAGER JOSEPH ZUPANICK
ADDRESS P.O. BOX 609 ADDRESS P.O. BOX 609
PINEVILLE, WV 24874 ADDRESS PINEVILLE, WV 24874

6-60

WYO 1848C

State of West Virginia
Division of Environmental Protection
Section of Oil & Gas

Box #

Well Operator's Report of Well Work

Farm name: U.S. Steel Mining Company, LLC Operator Well No: 8LM-0.5R
Location: Elevation: 2081.17 Quadrangle: PINEVILLE
District: CENTER County: WYOMING
Latitude: 14,800 Feet South of 37 Deg. 35 Min. 00 Sec.
Longitude: 200 Feet West of 81 Deg. 32 Min. 30 Sec.

Company: CDX Gas, LLC
5485 BELTLINE ROAD, SUITE 280
DALLAS, TX 75240-0000

Agent: JOSEPH A. ZUPANICK

Inspector: OFIE HELMICK
Permit Issued: 10/06/99
Well Work commenced: 10/20/99
Well Work completed: 11/20/99
Verbal plugging
Permission granted on:
Rotary x Cable Rig
Total depth (ft) 1243.10
Fresh water depths (ft) N/A
Salt water depths (ft) N/A
Is coal being mined in the area (Y/N)? Y
Coal depths (ft): 1140 1186.5

RECEIVED
Office of Oil & Gas
Permitting
NOV 06 2000
WV Division of
Environmental Protection

Casing & Tubing Size	Used in Drilling	Left in Well	Cement Fill up
13 3/8"	35'	35'	9 Ft ³
9 5/8"	230'	230'	72 Ft ³
7"	1138.65'	1138.65'	171 Ft ³
2 7/8"	1182	----	----

OPEN FLOW DATA

Producing formation Pocahontas No. 3 Seam and Penn Coals Pay zone depth (ft)
Gas: Initial open flow N/A Mcf/d Oil: Initial open flow Bbl/d
Final open flow N/A Mcf/d Final open flow Bbl/d
Time of open flow between initial and final tests: hours
Static rock pressure psig (surface pressure) after hours

Second Producing formation Pay zone depth (ft)
Gas: Initial open flow N/A Mcf/d Oil: Initial open flow Bbl/d
Final open flow N/A Mcf/d Final open flow Bbl/d
Time of open flow between initial and final tests: hours
Static rock pressure psig (surface pressure) after hours

Note: ON BACK OF THIS FORM, PUT THE FOLLOWING: 1) DETAILS OF PERFORATED INTERVALS, FRACTURING OR STIMULATING, PHYSICAL CHANGE, ETC. 2) THE WELL LOG WHICH IS A SYSTEMATICK DETAILED GEOLOGICAL RECORD OF ALL FORMATIONS, INCLUDING COAL ENCOUNTERED BY THE WELLBORE.

For: CDX Gas, LLC
By: J. A. Zupanick
Date: 10/20/00

NOV 23 2000

WYO 1848 C

Operator: 8LM-0.5R
 API No. 47- 109-01848 C
 Location: Pineville

Details of Perforated Intervals, Fracturing or Stimulation, Physical Change, Etc.

Well Log & Geologic Record

Formation	Top	Bottom
Sandy Shale	0	53
Shale	53	99
Sandy Shale	99	113
Shale	113	214
Sandy Shale	214	280
Shale	280	320
Sandy Shale	320	407
Shale	407	441
Sandy Shale	441	483
Shale	483	497
Sandy Shale	497	713.5
Shale	713.5	733.5
Sandy Shale	733.5	775.5
Sandstone	775.5	786
Sandy Shale	786	828
Sandstone	828	838
Sandy Shale	838	907
Sandstone	907	1019
Sandy Shale	1019	1031
Sandstone	1031	1035
Sandy Shale	1035	1052
Sandstone	1052	1069
Sandy Shale	1069	1140
Coal	1140	1144
Sandy Shale	1144	1186.5
Coal	1186.5	1192
Sandy Shale	1192	1243.10

RECEIVED
 Office of Oil & Gas
 Permitting
 NOV 06 2000
 WV Division of
 Environmental Protection