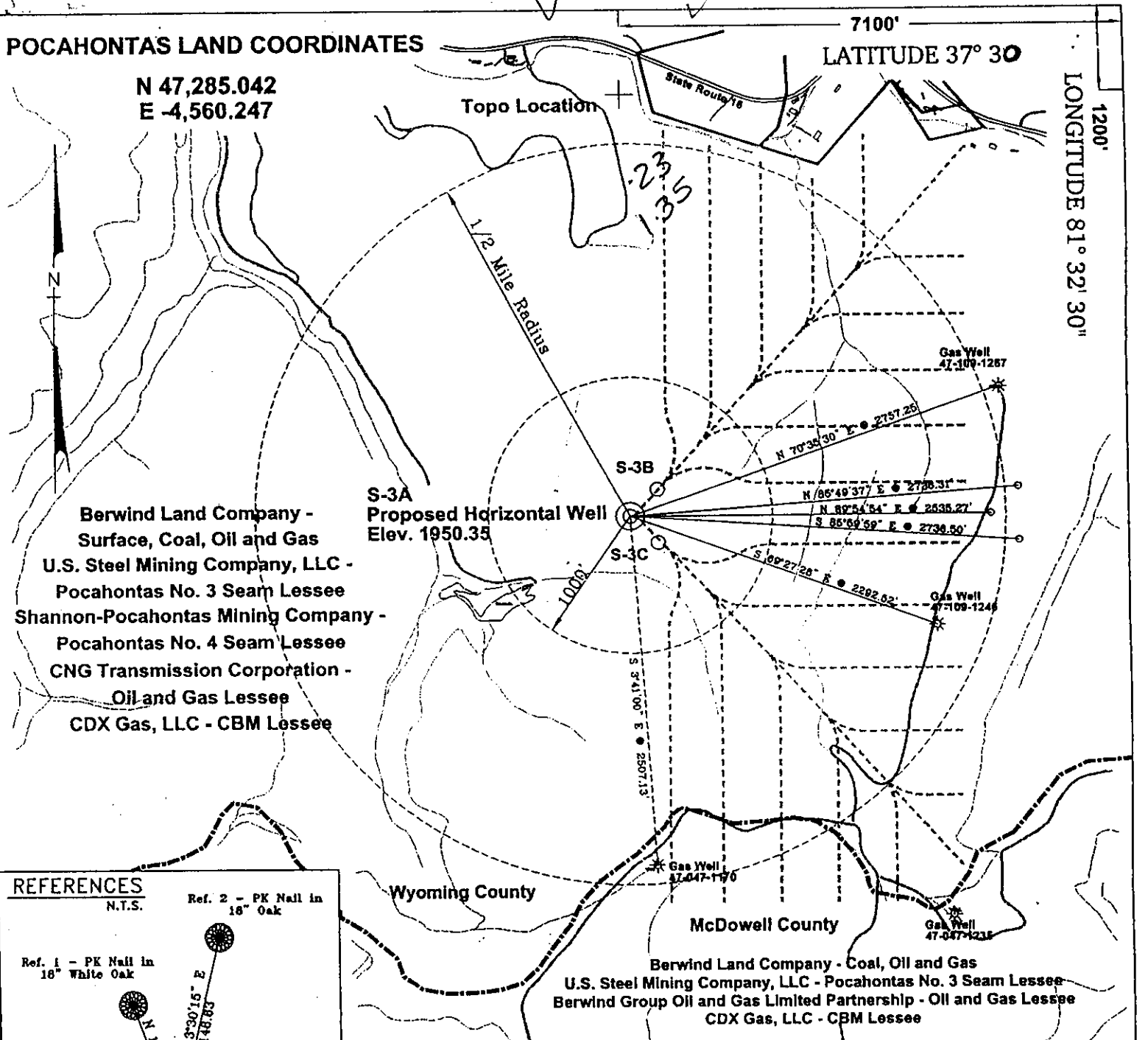


POCAHONTAS LAND COORDINATES

N 47,285.042
E -4,560.247

7100'
LATITUDE 37° 30'

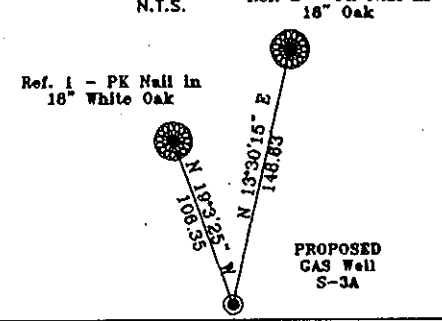
LONGITUDE 81° 32' 30"



Berwind Land Company - Surface, Coal, Oil and Gas
U.S. Steel Mining Company, LLC - Pocahontas No. 3 Seam Lessee
Shannon-Pocahontas Mining Company - Pocahontas No. 4 Seam Lessee
CNG Transmission Corporation - Oil and Gas Lessee
CDX Gas, LLC - CBM Lessee

Berwind Land Company - Coal, Oil and Gas
U.S. Steel Mining Company, LLC - Pocahontas No. 3 Seam Lessee
Berwind Group Oil and Gas Limited Partnership - Oil and Gas Lessee
CDX Gas, LLC - CBM Lessee

REFERENCES

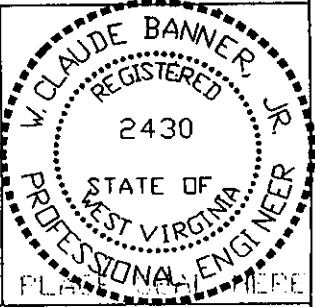


Notes:
 No known domestic water supplies within 1000 feet.
 (+) Denotes location of well on USGS map.

FILE No. CDXGAS
 DRAWING NAME \PLAT\S-3A
 Drawing Number 12-16-99-ISP
 SCALE 1" = 1000'
 MINIMUM DEGREE OF ACCURACY 1:2500
 PROVEN SOURCE OF ELEVATION USGS B.M. F44
EL. 1565

I THE UNDERSIGNED, HEREBY CERTIFY THAT THIS PLAT IS CORRECT TO THE BEST OF MY KNOWLEDGE AND BELIEF AND SHOWS ALL THE INFORMATION REQUIRED BY LAW AND THE REGULATIONS ISSUED AND PRESCRIBED BY THE DEPARTMENT OF MINES.

(SIGNED) *W. Claude Banner Jr.*
 R.P.E. 2430 R.P.S.



STATE OF WEST VIRGINIA
DIVISION OF ENVIRONMENTAL PROTECTION
OFFICE OF OIL AND GAS
NITRO, WV

DATE MARCH 13 2000
 OPERATOR'S WELL No. S-3A
 API WELL No. 47 - 109 - 01887C

WELL TYPE: OIL GAS CBM LIQUID INJECTION WASTE DISPOSAL STATE COUNTY PERMIT
 (IF "GAS") PRODUCTION X STORAGE DEEP SHALLOW
 LOCATION: ELEVATION 1950.35 WATER SHED UNNAMED TRIBUTARY OF INDIAN CREEK
 DISTRICT CENTER COUNTY WYOMING
 QUADRANGLE WELCH, WV

SURFACE OWNER BERWIND LAND COMPANY ACREAGE 867.22 Tax Map 143 - Parcel 1
 CBM ROYALTY OWNER BERWIND LAND COMPANY LEASE ACREAGE 2940.66

LEASE No. _____
 PROPOSED WORK: DRILL X CONVERT DRILL DEEPER REDRILL FRACTURE OR STIMULATE PLUG OFF OLD FORMATION PERFORATE NEW FORMATION OTHER PHYSICAL CHANGE IN WELL (SPECIFY) _____

PLUG AND ABANDON CLEAN OUT AND REPLUG
 TARGET FORMATION POCAHONTAS NO. 3 & NO. 4 SEAMS ESTIMATED DEPTH 1039
 WELL OPERATOR CDX GAS, LLC MANAGER JOSEPH ZUPANICK
 ADDRESS P.O. BOX 609 ADDRESS P.O. BOX 609
PINEVILLE, WV 24874 PINEVILLE, WV 24874

6-0 267

APR 14 2000

WYO 1887C

State of West Virginia
Division of Environmental Protection
Section of Oil & Gas

Well Operator's Report of Well Work

Farm name: Berwind Land Company

Operator Well No: S-3A

Location: Elevation: 1,930.71

Quadrangle: WELCH

District: CENTER

County: WYOMING

Latitude: 1200 Feet South of 37 Deg. 30 Min. 00 Sec.
Longitude: 7100 Feet West of 81 Deg. 32 Min. 30 Sec.

Company: CDX Gas, LLC
P.O. Box 609
Pineville, WV 24874

Agent: JOSEPH A. ZUPANICK

Inspector: OFIE HELMICK
Permit Issued: 04/13/00
Well Work commenced: 06/08/00
Well Work completed: 06/14/00
Verbal plugging _____
Permission granted on: _____
Rotary x Cable _____ Rig _____
Total depth (ft) 845' K.B. _____
Fresh water depths (ft) N/A
Salt water depths (ft) N/A
Is coal being mined in the area (Y/N)? ___
Coal depths (ft): Sewell 234 - 236

Casing & Tubing Size	Used in Drilling	Left in Well	Cement Fill up
13 5/8"	33'	33'	Surface
9 5/8"	376'	376'	Surface
7"	705'	705'	Surface

RECEIVED
Office of Oil & Gas
Permitting
FEB 14 2001
WV Division of
Environmental Protection

OPEN FLOW DATA

Producing formation Non-Producer
Gas: Initial open flow N/A Mcf/d
Final open flow N/A Mcf/d
Time of open flow between initial and final tests: _____ hours
Static rock pressure _____ psig (surface pressure) after _____ hours

Pay zone depth (ft) _____
Oil: Initial open flow _____ Bbl/d
Final open flow _____ Bbl/d

Second Producing formation _____
Gas: Initial open flow N/A Mcf/d
Final open flow N/A Mcf/d
Time of open flow between initial and final tests: _____ hours
Static rock pressure _____ psig (surface pressure) after _____ hours

Pay zone depth (ft) _____
Oil: Initial open flow _____ Bbl/d
Final open flow _____ Bbl/d

Note: ON BACK OF THIS FORM, PUT THE FOLLOWING: 1) DETAILS OF PERFORATED INTERVALS, FRACTURING OR STIMULATING, PHYSICAL CHANGE, ETC. 2) THE WELL LOG WHICH IS A SYSTEMATICK DETAILED GEOLOGICAL RECORD OF ALL FORMATIONS, INCLUDING COAL ENCOUNTERED BY THE WELLBORE.

For: Frank Merendino
CDX Gas, LLC
By: Frank Merendino
Date: 2/5/01

FEB 23 2001

WYO 1887 C

Operator: S-3A
API No. 47- 109-01887 C
Location: Wyoming County

Details of Perforated Intervals, Fracturing or Stimulation, Physical Change, Etc.

Well Log & Geologic Record - Depths from K.B.

Formation	Top	Bottom
Sand	0	180
Sandy Shales	180	204
Sand	204	234
Coal	234	236
Sand	236	269
Sandy Shales	269	281
Sand	281	388
Sand & Shales	388	478
Sand	478	533
Sandy Shale	533	605
Sand	605	663
Sandy Shale	663	691
Sand	691	721
Sandy Shale	721	749
Sand & Shale	749	845
Total Depth	845	

RECEIVED
Office of Oil & Gas
Permitting
FEB 14 2001
WV Division of
Environmental Protection