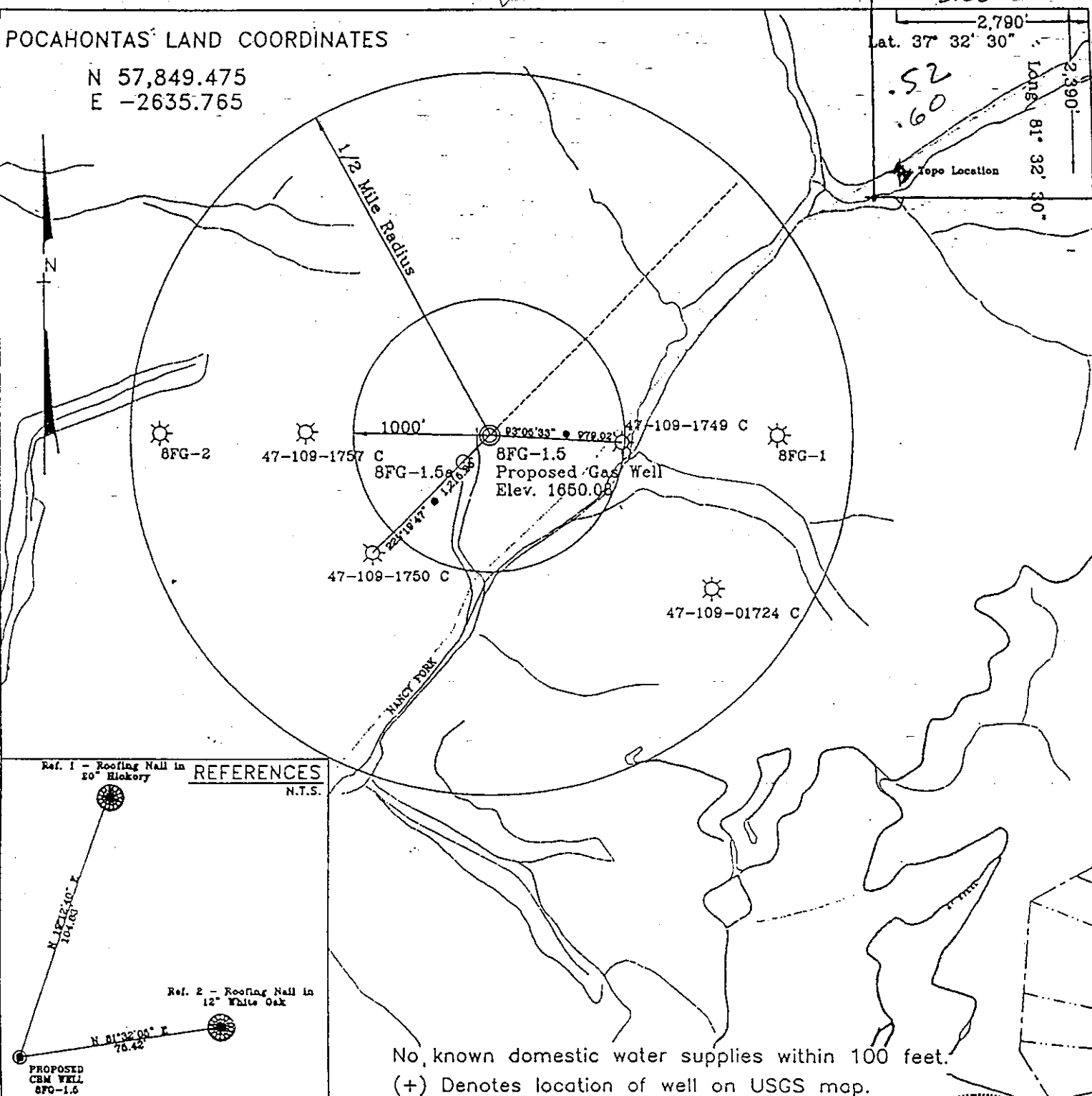


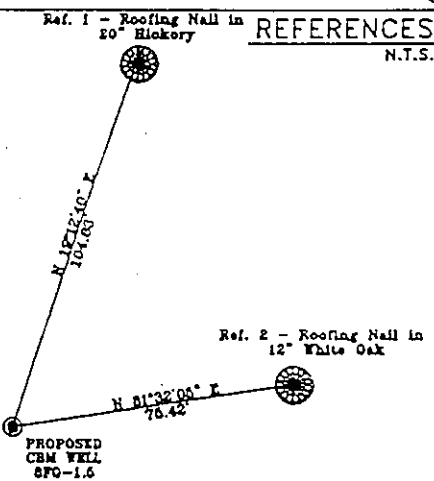
POCAHONTAS LAND COORDINATES

N 57,849.475  
E -2635.765

3150  
2,790  
Lat. 37° 32' 30"  
2,390  
Long. 81° 32' 30"  
2725  
52  
60  
Topo Location



REFERENCES  
N.T.S.

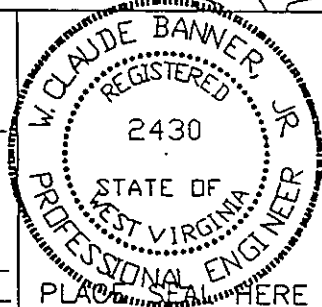


No known domestic water supplies within 100 feet.  
(+) Denotes location of well on USGS map.

DRAWING NAME \PLAT\8FG-1.5  
SCALE 1" = 1000'  
MINIMUM DEGREE OF ACCURACY 1 : 2500  
PROVEN SOURCE OF ELEVATION USGS B.M. F44  
EL. 1565

I THE UNDERSIGNED, HEREBY CERTIFY THAT THIS PLAT IS CORRECT TO THE BEST OF MY KNOWLEDGE AND BELIEF AND SHOWS ALL THE INFORMATION REQUIRED BY LAW AND THE REGULATIONS ISSUED AND PRESCRIBED BY THE DEPARTMENT OF MINES.

(SIGNED) W. Claude Banner, Jr.  
R.P.E. \_\_\_\_\_ R.P.S. \_\_\_\_\_



STATE OF WEST VIRGINIA  
DIVISION OF ENVIRONMENTAL PROTECTION  
OFFICE OF OIL AND GAS  
NITRO, WV

DATE SEPT 18 19 98  
OPERATOR'S WELL No. 8FG-1.5a  
API WELL No. 47 - 109 C 1942CP

WELL TYPE: OIL GAS CBM LIQUID INJECTION WASTE DISPOSAL STATE COUNTY PERMIT  
(IF "GAS") PRODUCTION X STORAGE DEEP SHALLOW

LOCATION: ELEVATION 1650.08 WATER SHED UNNAMED TRIBUTARY OF NANCY FORK OF INDIAN CREEK  
DISTRICT CENTER COUNTY WYOMING  
QUADRANGLE PINEVILLE, WV

SURFACE OWNER U.S. STEEL MINING COMPANY, LLC ACREAGE 37977.66  
CBM ROYALTY OWNER U.S. STEEL MINING COMPANY, LLC LEASE ACREAGE \_\_\_\_\_  
LEASE No. \_\_\_\_\_

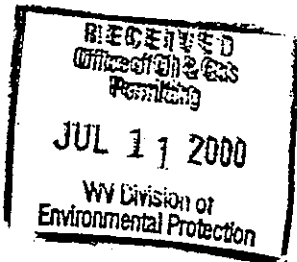
PROPOSED WORK: DRILL X CONVERT DRILL DEEPER REDRILL FRACTURE OR STIMULATE PLUG OFF OLD FORMATION PERFORATE NEW FORMATION OTHER PHYSICAL CHANGE IN WELL (SPECIFY) \_\_\_\_\_

PLUG AND ABANDON CLEAN OUT AND REPLUG

TARGET FORMATION POCAHONTAS NO. 3 & 4 ESTIMATED DEPTH 799.58'  
WELL OPERATOR U.S. STEEL MINING COMPANY MANAGER DAVID TRAVIS **JUL 14 2000**  
ADDRESS P.O. Box Pineville, WV 24874 ADDRESS P.O. Box Pineville, WV 24874

WYO 1942 CP





1942  
API# 47-109-04770 C

State of West Virginia  
Division of Environmental Protection  
Section of Oil & Gas

Reviewed 18

Well Operator's Report of Well Work

Farm name: U.S. Steel Mining Company, LLC Operator Well No: 8FG-1.5a  
Location: Elevation: 1630.09 Quadrangle: PINEVILLE  
District: CENTER County: WYOMING  
Latitude: 2390 Feet South of 37 Deg. 32 Min. 30 Sec.  
Longitude: 2790 Feet West of 81 Deg. 32 Min. 30 Sec.  
Company: CDX Gas, LLC  
P.O. Box 609  
Pineville, WV 24874

Agent: Joe Zupanick

Inspector: OFIE HELMICK  
Permit Issued: 10/16/98  
Well Work commenced: 10/27/98  
Well Work completed: 11/03/98  
Verbal plugging  
Permission granted on:  
Rotary  Cable  Rig  
Total depth (ft) 650'  
Fresh water depths (ft) N/A  
Salt water depths (ft) N/A  
Is coal being mined in the area (Y/N)? Y  
Coal depths (ft): 20'

Casing & Tubing Size	Used in Drilling	Left in Well	Cement Fill up
13 5/8"	20'	20'	5
9 5/8"	350'	350'	110
7"	590'	590'	89

OPEN FLOW DATA

Producing formation Pocahontas No. 3 Pay zone depth (ft) \_\_\_\_\_  
 Gas: Initial open flow N/A Mcf/d Oil: Initial open flow \_\_\_\_\_ Bbl/d  
 Final open flow N/A Mcf/d Final open flow \_\_\_\_\_ Bbl/d  
 Time of open flow between initial and final tests: \_\_\_\_\_ hours  
 Static rock pressure \_\_\_\_\_ psig (surface pressure) after \_\_\_\_\_ hours

Second Producing formation \_\_\_\_\_ Pay zone depth (ft) \_\_\_\_\_  
 Gas: Initial open flow N/A Mcf/d Oil: Initial open flow \_\_\_\_\_ Bbl/d  
 Final open flow N/A Mcf/d Final open flow \_\_\_\_\_ Bbl/d  
 Time of open flow between initial and final tests: \_\_\_\_\_ hours  
 Static rock pressure \_\_\_\_\_ psig (surface pressure) after \_\_\_\_\_ hours

Note: ON BACK OF THIS FORM, PUT THE FOLLOWING: 1) DETAILS OF PERFORATED INTERVALS, FRACTURING OR STIMULATING, PHYSICAL CHANGE, ETC. 2) THE WELL LOG WHICH IS A SYSTEMATICK DETAILED GEOLOGICAL RECORD OF ALL FORMATIONS, INCLUDING COAL ENCOUNTERED BY THE WELLBORE.

For: CDX Gas LLC  
By: J.A. Zupanick  
Date: 11/28/99

WYO 1942

JUL 14 2000