

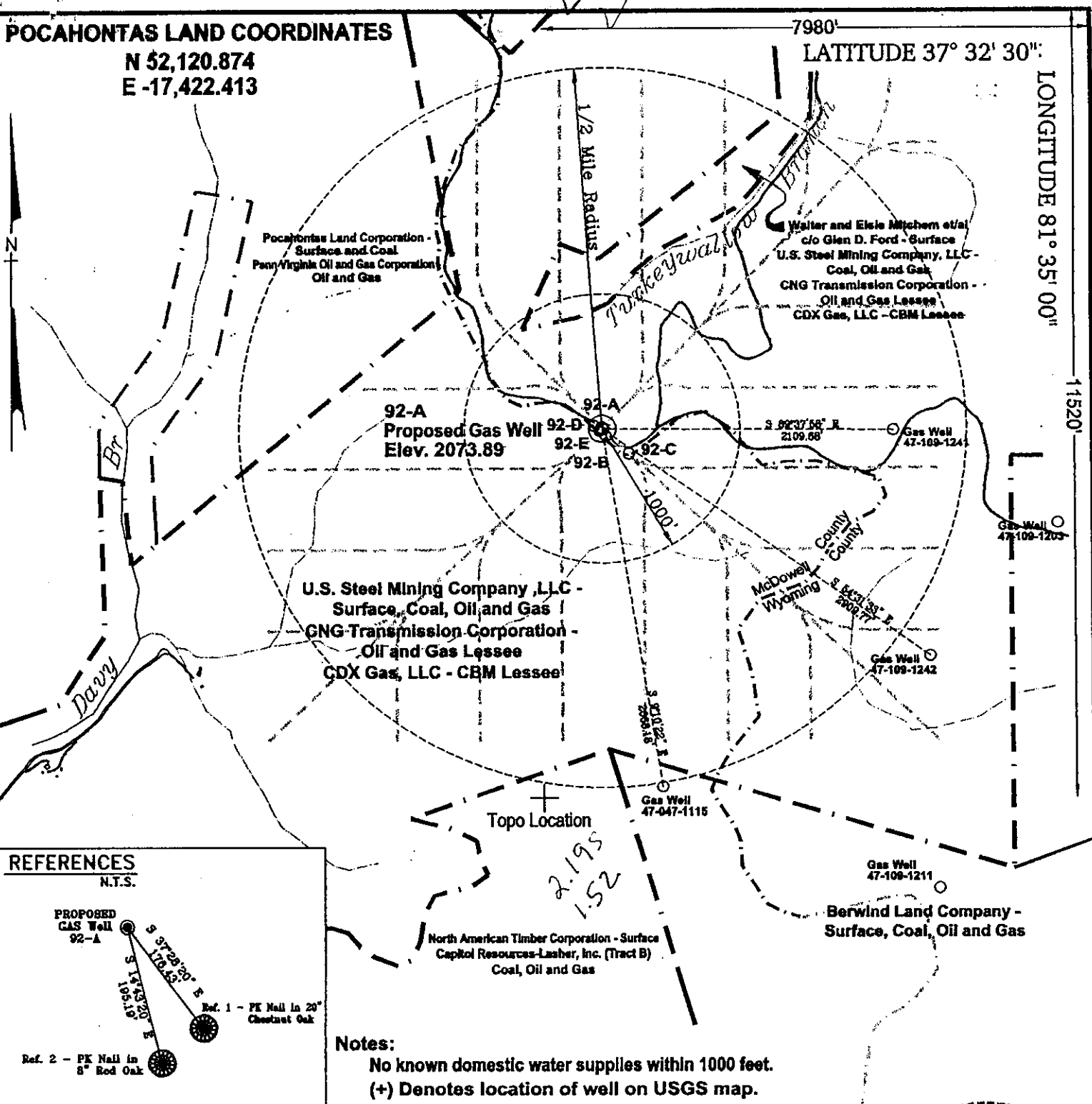
POCAHONTAS LAND COORDINATES

N 52,120.874
E -17,422.413

7980'

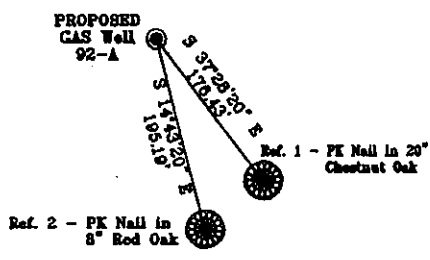
LATITUDE 37° 32' 30"

LONGITUDE 81° 35' 00"



REFERENCES

N.T.S.



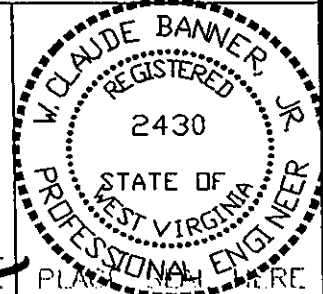
Notes:

No known domestic water supplies within 1000 feet.
(+) Denotes location of well on USGS map.

FILE No. CDXGAS
DRAWING NAME \CDXGAS\PLATS
Drawing Number 12-7-00-1SP
SCALE 1" = 1000'
MINIMUM DEGREE OF ACCURACY 1 : 2500
PROVEN SOURCE OF ELEVATION GPS - GLOBAL POSITIONING SYSTEM

I THE UNDERSIGNED, HEREBY CERTIFY THAT THIS PLAT IS CORRECT TO THE BEST OF MY KNOWLEDGE AND BELIEF AND SHOWS ALL THE INFORMATION REQUIRED BY LAW AND THE REGULATIONS ISSUED AND PRESCRIBED BY THE DEPARTMENT OF MINES.

(SIGNED) W. Claude Banner Jr.
R.P.E. 2430 R.P.S.



**STATE OF WEST VIRGINIA
DIVISION OF ENVIRONMENTAL PROTECTION
OFFICE OF OIL AND GAS
NITRO, WV**

DATE DECEMBER 11, 2000
OPERATOR'S WELL No. 92-A
API WELL No. 47-109-01976C
STATE COUNTY PERMIT

WELL TYPE: OIL GAS CBM LIQUID INJECTION WASTE DISPOSAL
(IF "GAS") PRODUCTION X STORAGE DEEP SHALLOW
LOCATION: ELEVATION 2073.89 WATER SHED TURKEYWALLOW BRANCH OF INDIAN CREEK; UNNAMED TRIBUTARY OF DAVY BRANCH OF TUG FORK
DISTRICT CENTER COUNTY WYOMING
QUADRANGLE PINEVILLE, WV
SURFACE OWNER U.S. STEEL MINING COMPANY, LLC ACREAGE 37977.66
CBM ROYALTY OWNER U.S. STEEL MINING COMPANY, LLC LEASE ACREAGE 4498.52

LEASE No. _____
PROPOSED WORK: DRILL X CONVERT DRILL DEEPER REDRILL FRACTURE OR STIMULATE PLUG OFF OLD FORMATION PERFORATE NEW FORMATION OTHER PHYSICAL CHANGE IN WELL (SPECIFY)

PLUG AND ABANDON CLEAN OUT AND REPLUG
TARGET FORMATION POCAHONTAS NO. 3 SEAM & PENN COALS ESTIMATED DEPTH 1351'
WELL OPERATOR CDX GAS, LLC VICE PRESIDENT-OPERATIONS JOSEPH ZUPANICK
ADDRESS P.O. BOX 609 ADDRESS PINEVILLE, WV 24874
PINEVILLE, WV 24874

IAN 12 2001

66 0

MVD 1976C

State of West Virginia
Division of Environmental Protection
Section of Oil & Gas

Reviewed AB 13

Well Operator's Report of Well Work

Farm name: U.S. Steel Mining Company

Operator Well No: 92-A

Location: Elevation: 2071.90

Quadrangle: Pineville

District: Center

County: WYOMING

Latitude: 11520 Feet South of 37 Deg. 32 Min. 30 Sec.
Longitude: 7980 Feet West of 81 Deg. 35 Min. 00 Sec.

Company: CDX Gas, LLC
P.O. Box 609
Pineville, WV 24874

RECEIVED
Office of Oil & Gas
Permitting

OCT 11 2002

WV Department of
Environmental Protection

Agent: JOSEPH A. ZUPANICK

Inspector: Ronnie Scott
Permit Issued: 1/11/01
Well Work commenced: 5/14/01
Well Work completed: 6/23/02
Verbal plugging
Permission granted on:
Rotary x Cable _____ Rig
Total depth (ft) 1193.4 TVD
Fresh water depths (ft) N/A
Salt water depths (ft) N/A
Is coal being mined in the area (Y/N)? Y
Coal depths (ft): 197, 570, 610, 693, 954

Casing & Tubing Size	Used in Drilling	Left in Well	Cement Fill up
13 3/8"	32'	32'	Surface
9 5/8"	256'	256'	Surface
7"	935'	935'	Surface

OPEN FLOW DATA

Producing formation Non Producer Pay zone depth (ft) _____
 Gas: Initial open flow N/A Mcf/d Oil: Initial open flow _____ Bbl/d
 Final open flow N/A Mcf/d Final open flow _____ Bbl/d
 Time of open flow between initial and final tests: _____ hours
 Static rock pressure _____ psig (surface pressure) after _____ hours

Second Producing formation _____ Pay zone depth (ft) _____
 Gas: Initial open flow _____ Mcf/d Oil: Initial open flow _____ Bbl/d
 Final open flow _____ Mcf/d Final open flow _____ Bbl/d
 Time of open flow between initial and final tests: _____ hours
 Static rock pressure _____ psig (surface pressure) after _____ hours

Note: ON BACK OF THIS FORM, PUT THE FOLLOWING: 1) DETAILS OF PERFORATED INTERVALS, FRACTURING OR STIMULATING, PHYSICAL CHANGE, ETC. 2) THE WELL LOG WHICH IS A SYSTEMATICK DETAILED GEOLOGICAL RECORD OF ALL FORMATIONS, INCLUDING COAL ENCOUNTERED BY THE WELLBORE.

For: Steven Pauley
CDX Gas, LLC
By: Steven Pauley
Date: 10-8-02

OCT 25 2002

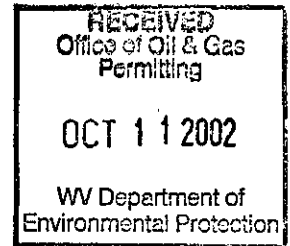
WYO 1976 C

Details of Perforated Intervals, Fracturing or Stimulation, Physical Change, Etc.

N/A

Well Log & Geologic Record - Depths from K.B.

Formation	Top	Bottom
Overburden	0	7
Sandy shale	7	123
Shale	123	153
Sandy shale	153	165
Shale	165	170
Sandy shale	170	179
Shale	179	197
Coal	197	198
Shale	198	207
Sandy shale	207	273
Shale	273	358
Sandy shale	358	411
Shale	411	413
Sandy shale	413	432
Shale	432	478
Sandy shale	478	528
Shale	528	547
Sandy shale	547	556
Shale	556	570
Coal	570	571
Shale	571	583
Sandy shale	583	604
Shale	604	610
Coal	610	612
Shale	612	639
Sandy Shale	639	693
Coal	693	695
Sandy Shale	695	702
Shale	702	706
Sandy Shale	706	716
Shale	716	735
Sandy Shale	735	819
Shale	819	847



OCT 25 2002

Conti.

Sandy Shale	847	864
Shale	864	870
Sandy Shale	870	889
Shale	889	899
Sandy Shale	899	925
Shale	925	954
Coal	954	956
Shale	956	1076
Sandy Shale	1076	1098
Sandstone	1098	1193
Sandy Shale	1193	1194

RECEIVED
Office of Oil & Gas
Permitting
OCT 11 2002
WV Department of
Environmental Protection

WYO 1976 C